

ANSARITM
ARCHITECTS

**URBAN
OASIS HOUSE**





East-facing garden with a modern wooden gazebo, layered greenery, and automated irrigation for a serene, low-maintenance landscape.

Project Location : Nungambakkam
Architectural Firm : Ansari Architects
Principal Architect : Dameem Ansari,
Jaffer Arshad Ansari

Plot Area : 12,000 Sq. Ft
No. Of Car Park : 1
No. Of Rooms : 5
Facing : North
Built - up Area : 6,000 Sq. Ft



Verandah

Verandah with imported Dark Emperor marble flooring, pebble gardens, and low-maintenance thorny plants creates a welcoming, courtyard-like entrance. A PVC wooden-look ceiling, large Sentry glass windows, and horizontal glass handrails enhance security, openness, and contemporary elegance.



Ground Floor

LEGEND

- | | | |
|---------------|---------------------|-----------------|
| • GAZEBO | • STORE | • TOILET |
| • LAWN | • POOJA | • COURTYARD - 2 |
| • CARPARKING | • RECEPTION ROOM | • BEDROOM - 2 |
| • VERANDAH | • LIVING HALL | • TOILET |
| • LOBBY | • COURTYARD - 1 | • ELEC ROOM |
| • KITCHEN | • DINING | • SERVANT ROOM |
| • WET KITCHEN | • BEDROOM - 1 | • TOILET |
| | • CLOTH DRYING AREA | • LIFT |



Lobby Area

The entrance lobby combines Italian and Spanish marble flooring with a glossy ICA finish and a chandelier for a luxurious feel. A custom shoe rack with beveled glass and wood accents doubles as a stylish console, blending elegance with practicality.



Reception Area

The reception features beveled glass walls overlooking the garden, flooding the space with natural light. White leather furniture with rose-gold accents and teal chairs create a stylish, inviting atmosphere.



Central Courtyard

The central courtyard brings abundant natural light through a walkable double-glass roof, creating a bright, open, and airy space. Wood-clad columns, ethnic flooring, and a serene Buddha mural enhance the peaceful, harmonious ambiance of the home.



Living Area

A pebble garden beneath the staircase complements the lift clad in premium Italian marble. The living room features large glass windows, a marble TV wall, custom laminated wood paneling, concealed AC, and elegant leather and rose-gold-accented marble furniture.



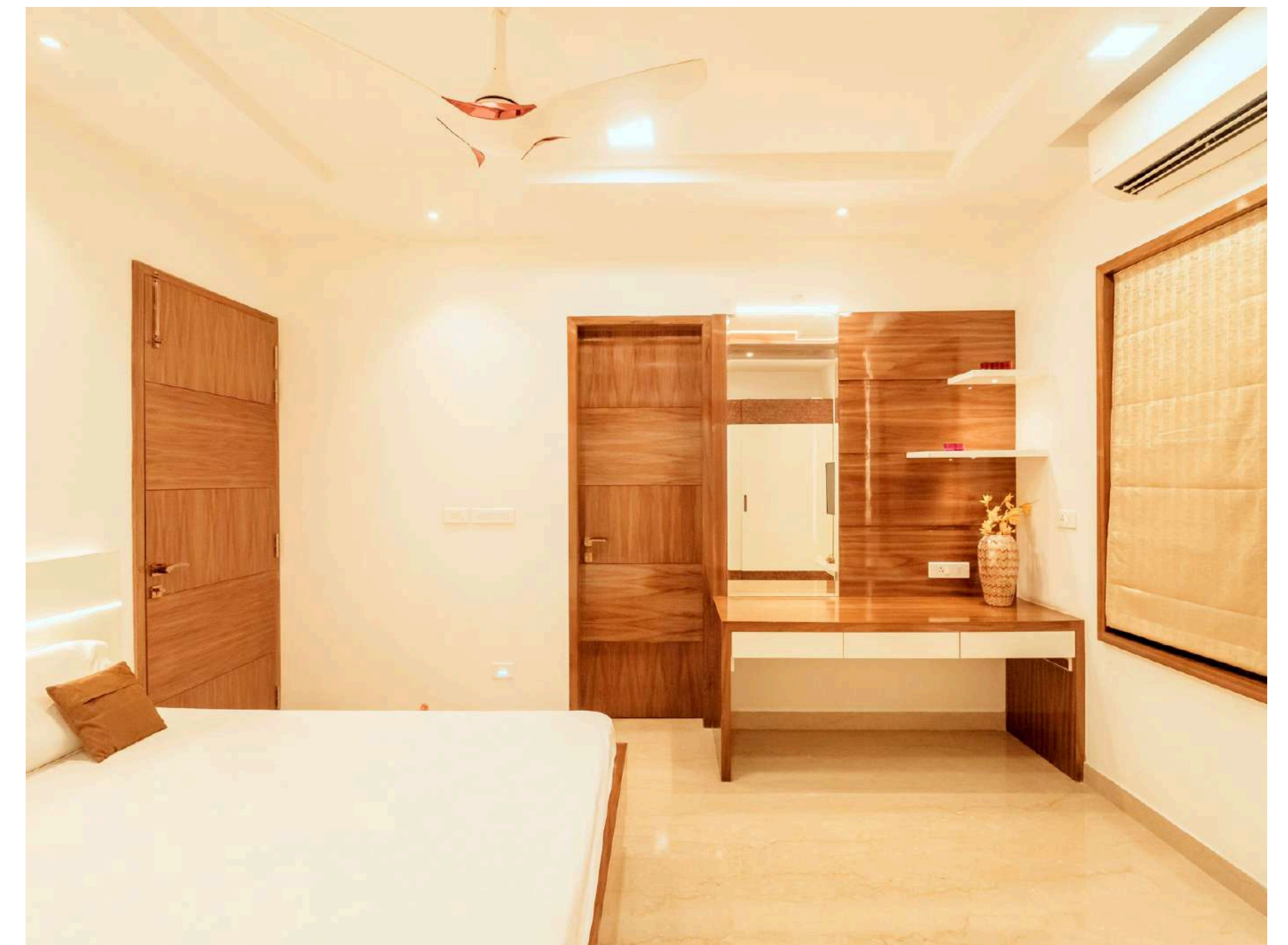
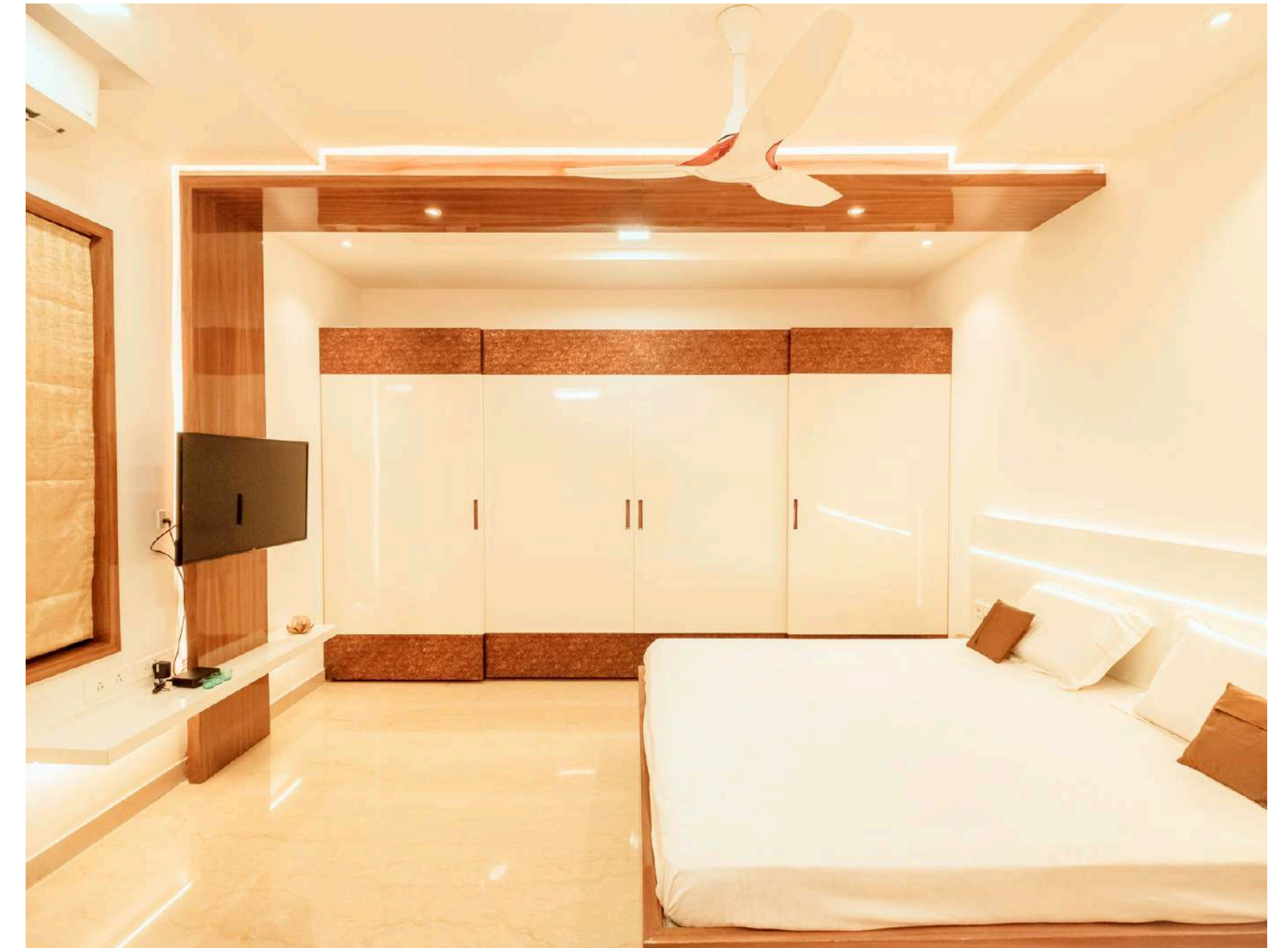
Dining Area

The dining area opens to a private courtyard with natural-light glass and a low-maintenance wooden deck with realistic plants. Luxury features like Brescia Aurora marble accents, rose-gold dining furniture, a chandelier, and ethnic-style fans create an elegant, functional space.



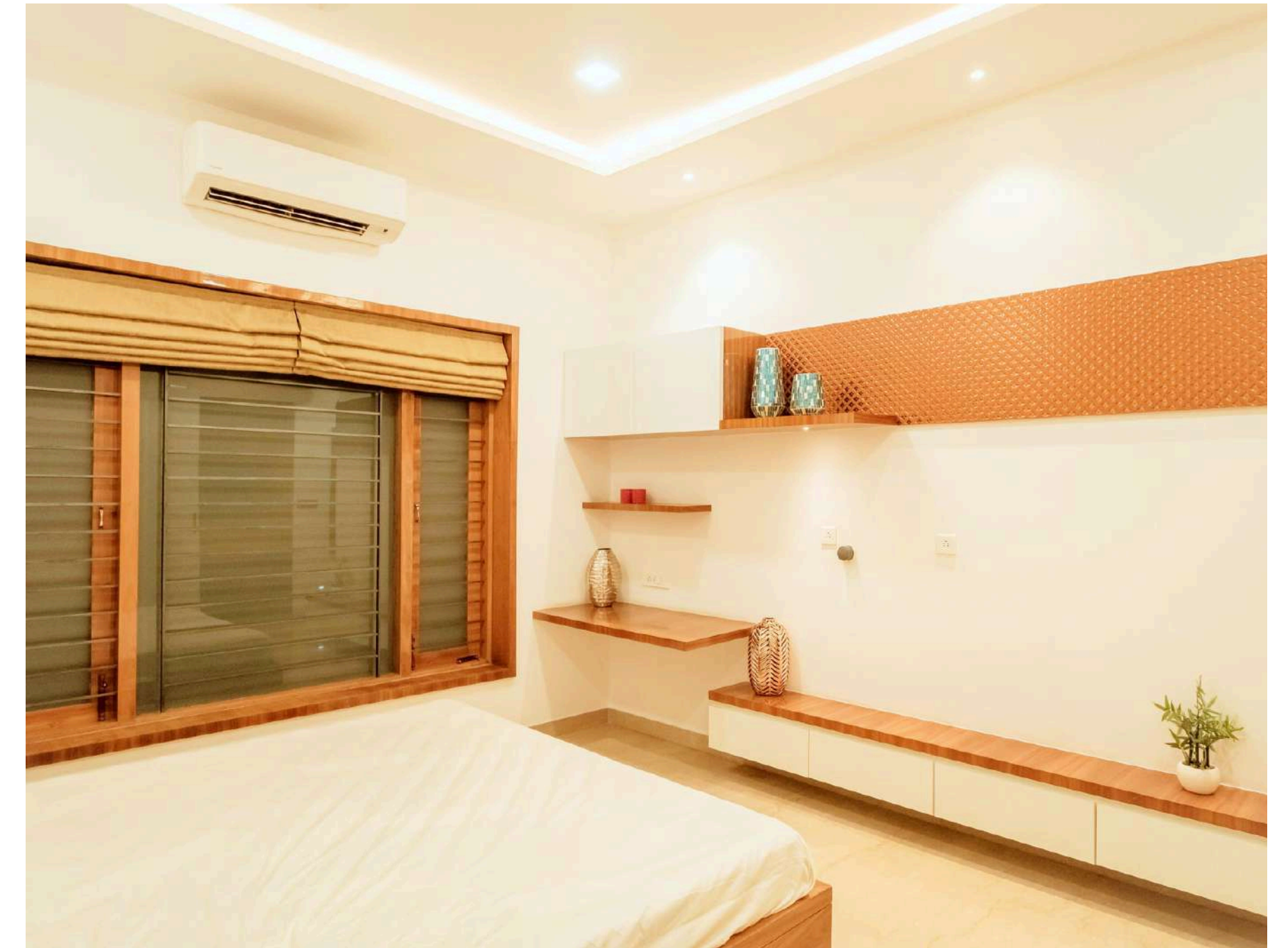
Kitchen Area

The kitchen has a dual-tone acrylic design with bold quartz countertops and backsplash for a sleek, premium look. It includes a slanting Bosch chimney, induction hob, microwave, OTG oven, and industrial sink. A separate wet kitchen handles heavy cooking, keeping the main kitchen clean and functional with secure utility access.



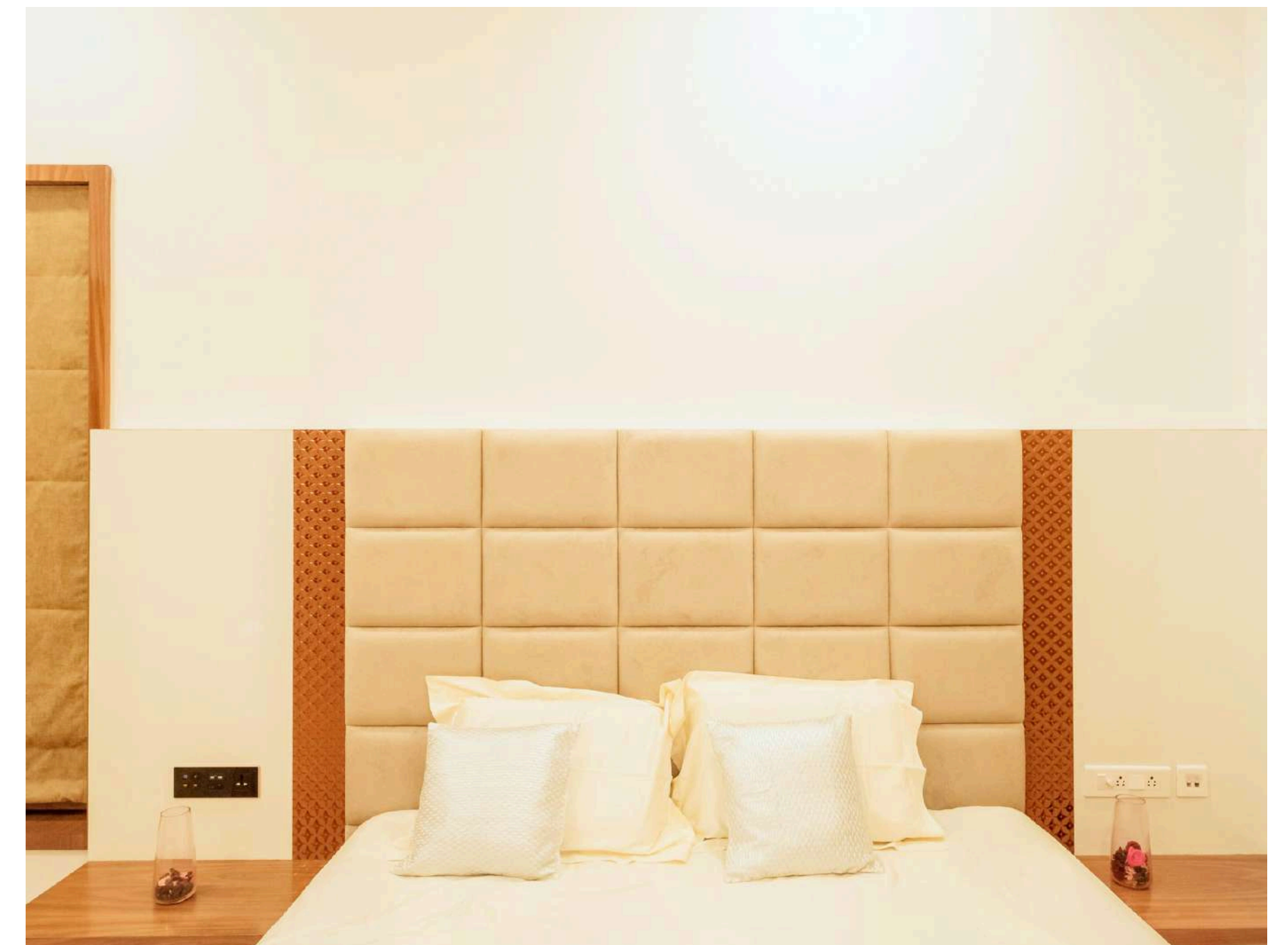
Bedroom - 1

This guest bedroom is designed for comfort and convenience, featuring a study table that doubles as luggage space, a small cabinet for essentials, a wall-mounted TV, and a full-height wardrobe. Thoughtful design ensures a functional, welcoming stay for elderly or visiting guests



Bedroom - 2

This guest bedroom offers bright natural light, motorized curtains, a study table, TV setup, and sliding wardrobes with ethnic-patterned laminate. Marble floors, cushioned panels, and rain-shower bathrooms add comfort and elegance.





First Floor

LEGEND

- FAMILY AREA
- COVERED TERRACE
- A.V.ROOM
- LIFT
- OPEN TERRACE
- BEDROOM -3
- DRESS
- TOILET
- BEDROOM - 4
- DRESS
- TOILET
- TOILET
- TERRACE GARDEN
- BEDROOM -5



Family Area

The family room blends a TV-focused seating area with sliding glass doors, warm beige tones, and wooden accents for a bright, open feel. Marble flooring, wooden paneling, and integrated ceiling lighting add elegance and depth.



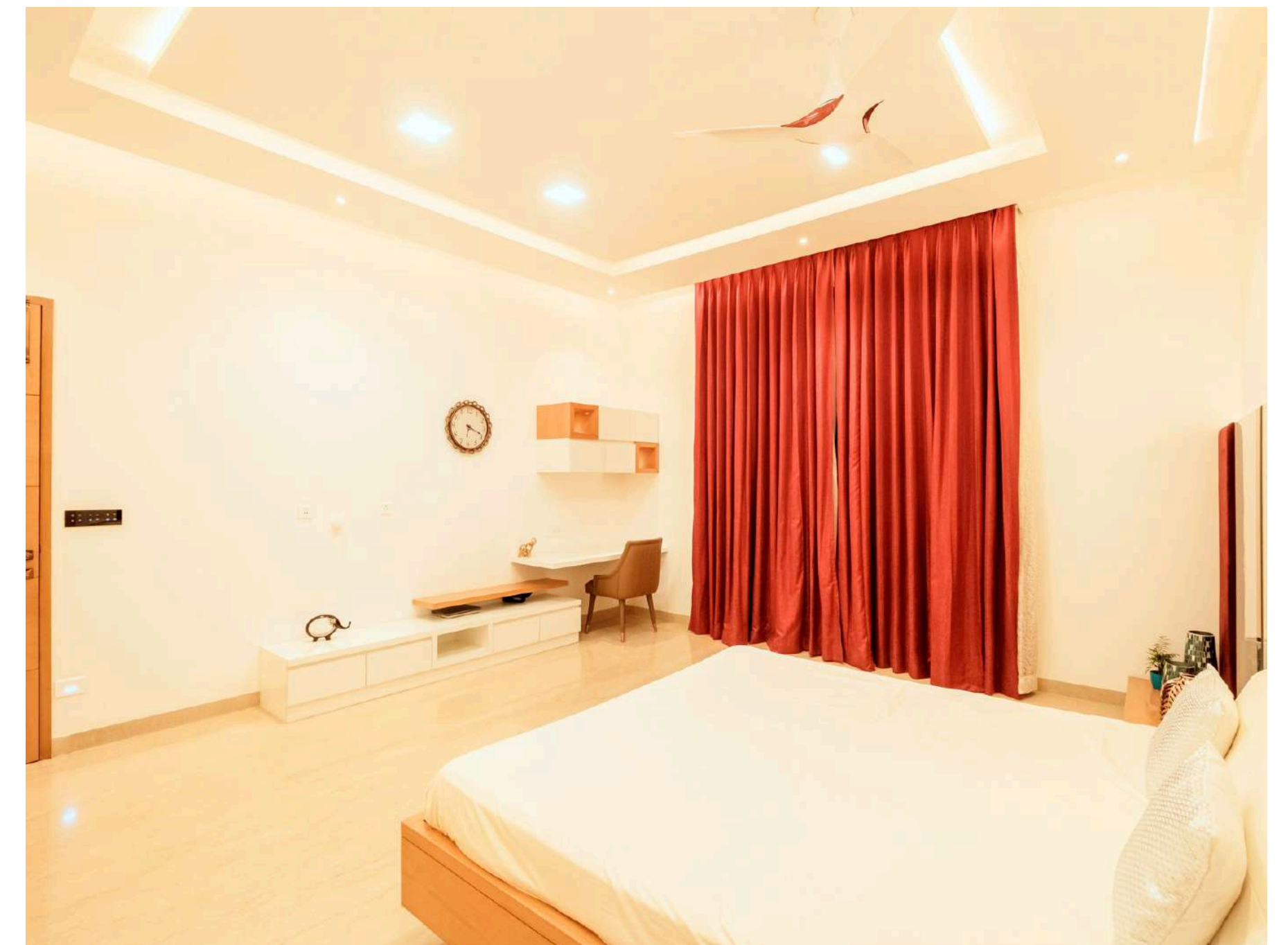
Covered Sitout

The semi-covered terrace features rustic red rattan furniture, seamless glass railings, and garden-style flooring, offering unobstructed views of the lawn below and a perfect spot for relaxing or hosting intimate gatherings.



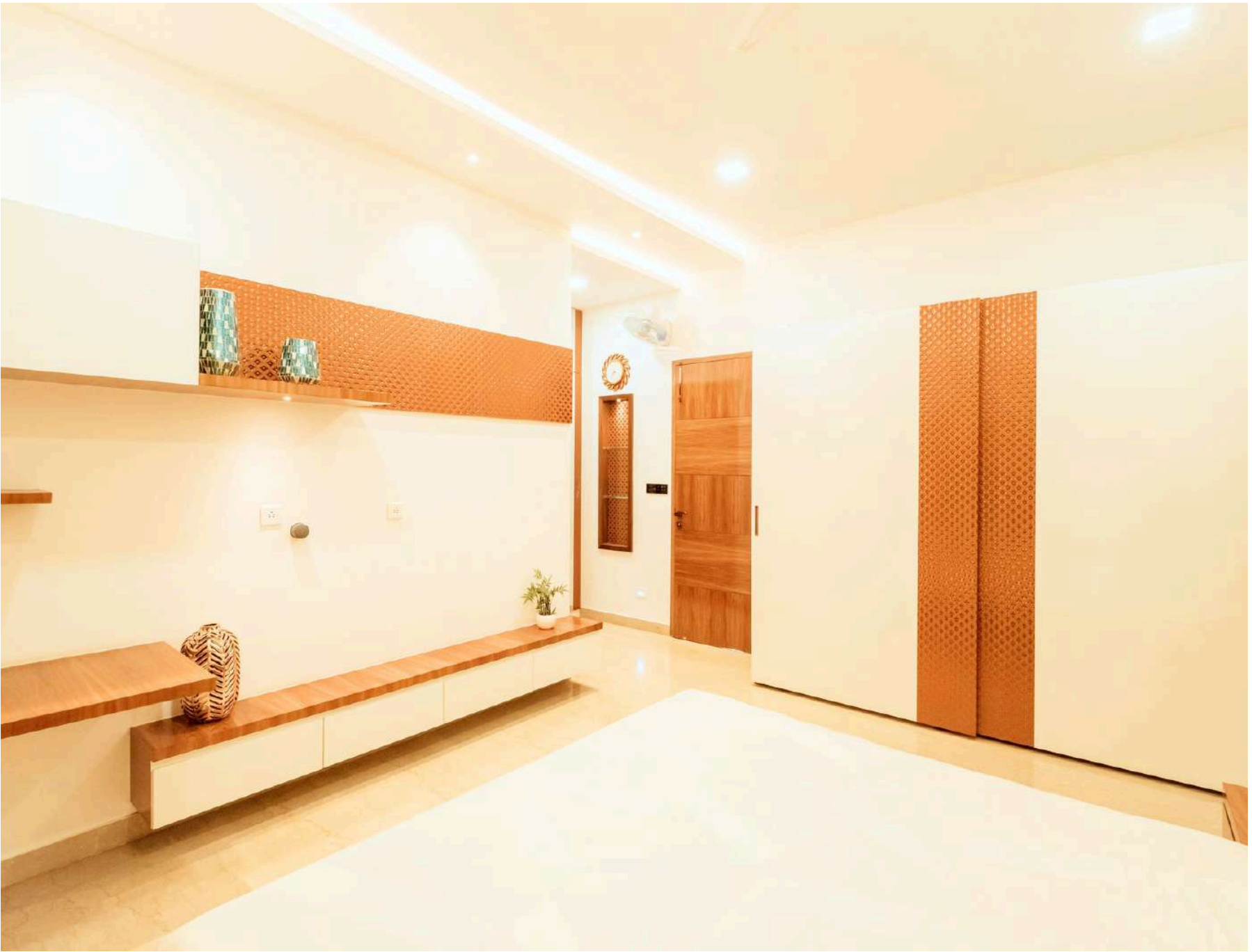
Home Theatre

The home theater features a 165-inch curved screen, Perlisten 7.2.4 Atmos system, motorized leather recliners, and wooden flooring for sound isolation. Large glass windows with custom heavy curtains balance natural light with acoustics, creating a luxurious, cinema-like experience.



Bedroom - 3

The master suite offers a concealed walk-in wardrobe, rose-gold bedhead, automated curtains, and beechwood finishes for a luxurious, warm ambiance. The ensuite blends Statuario and Portoro marble, wooden paneling, smart mirrors, and high-tech Grohe fittings for elegance and practicality.



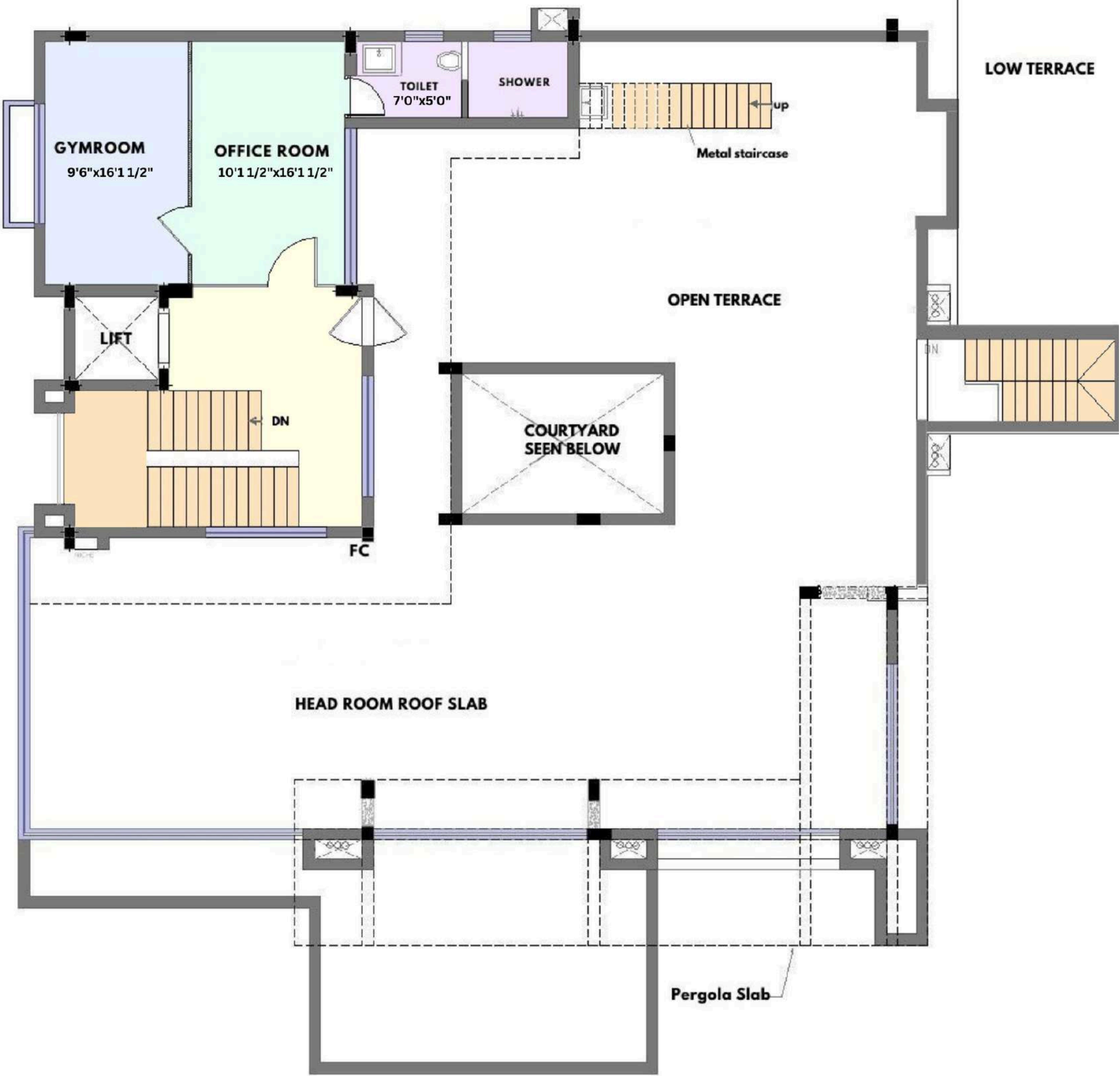
Bedroom - 4

The first daughter’s bedroom features a terrace with full sunlight, secure stainless-steel cutout panels, and an adjoining study nook by the window. Rose-gold-accented veneer, sliding wardrobes, and a TV provision create a stylish, functional, and bright space.



Bedroom - 5

The second daughter's bedroom features a front-facing view with a large automated glass window, a motorized curtain system, and a clever lift-up TV unit. A study nook, dressing room with smart mirror, and marble-accented bathroom create a stylish, functional, and bright space.



TERRACE FLOOR PLAN



Second Floor

LEGEND

- GYM ROOM
- OFFICE ROOM
- LIFT
- OPEN TERRACE
- TOILET



Gym Room

The gym has a dark, beveled glass wall that doubles as an artistic mirror, while a wooden partition creates a sleek work-from-home nook.



Office Room

The office features a stylish work-from-home setup with a designer table and chairs, seamlessly matching the home's decor.

