

ANSARITM
ARCHITECTS

**TALL COURTYARD
HOUSE**

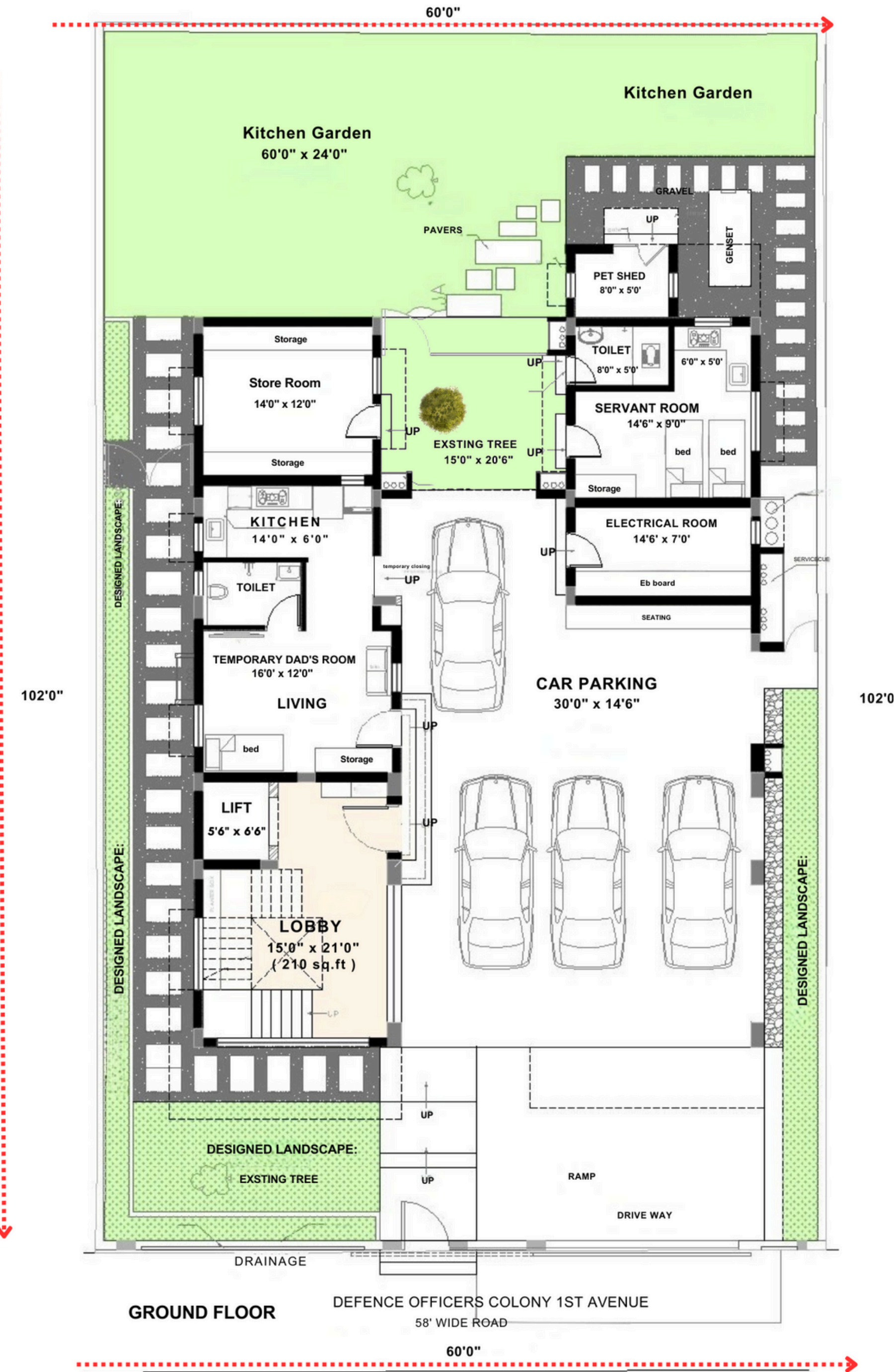




The ground-level parking area beneath the extended upper floor accommodates multiple vehicles with easy circulation.

Project Location : Ekkatuthangal, Chennai
Architectural Firm : Ansari Architects
Principal Architect : Dameem Ansari,
Jaffer Arshad Ansari

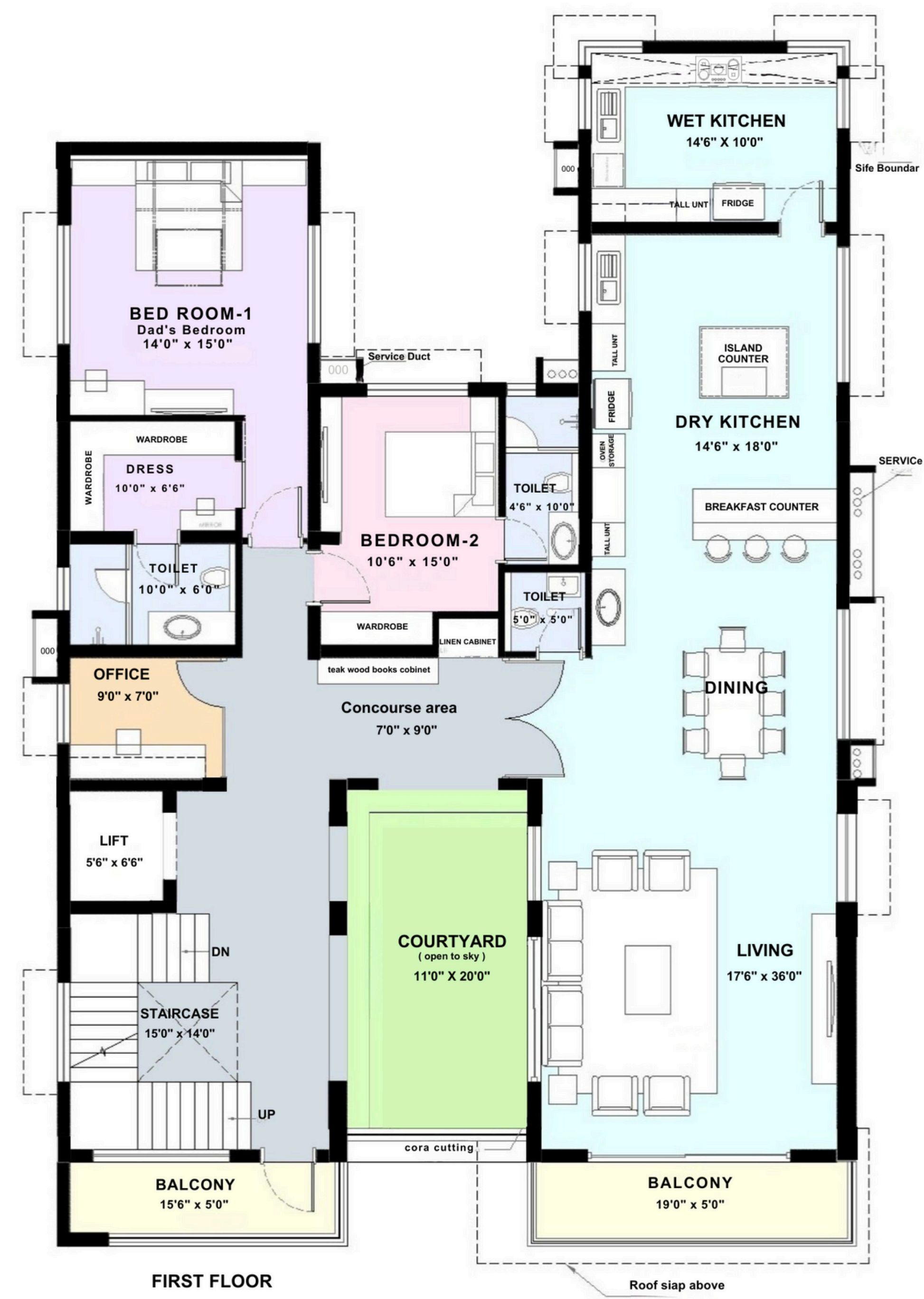
Plot Area : 6100 Sq.Ft
No. Of Car Park : 1
No. Of Rooms : 5
Facing : West
Built - up Area : 10,400 Sq.Ft



Ground Floor

LEGEND

- LANDSCAPE
- CAR PARKING
- LOBBY
- LIFT
- LIVING AREA
- TOILET
- KITCHEN
- STORE ROOM
- EXSTING TREE
- KITCHEN GARDEN
- GRAVEL
- PET SHED
- SERVANT ROOM
- TOILET
- ELECTRICAL ROOM



First Floor

LEGEND

- COURTYARD
- BALCONY
- LIFT
- CONSCOURSE AREA
- LIVING AREA
- TOILET
- BALCONY
- DINING
- BREAKFAST COUNTER
- DRY KITCHEN
- WET KITCHEN
- OFFICE AREA
- BED ROOM - 1
- DRESSING ROOM
- TOILET
- BEDROOM - 2
- TOILET



Living Space

As an open and welcoming space, the living area connects smoothly with nearby zones and is brightened by large windows that enhance its overall sense of openness.



CourtYard

The Moroccan-inspired courtyard features textured walls, ethnic-style tiles, and beautifully layered lighting, creating a serene, sunlit space that offers relaxation, comfort, and a peaceful retreat from daily stress.



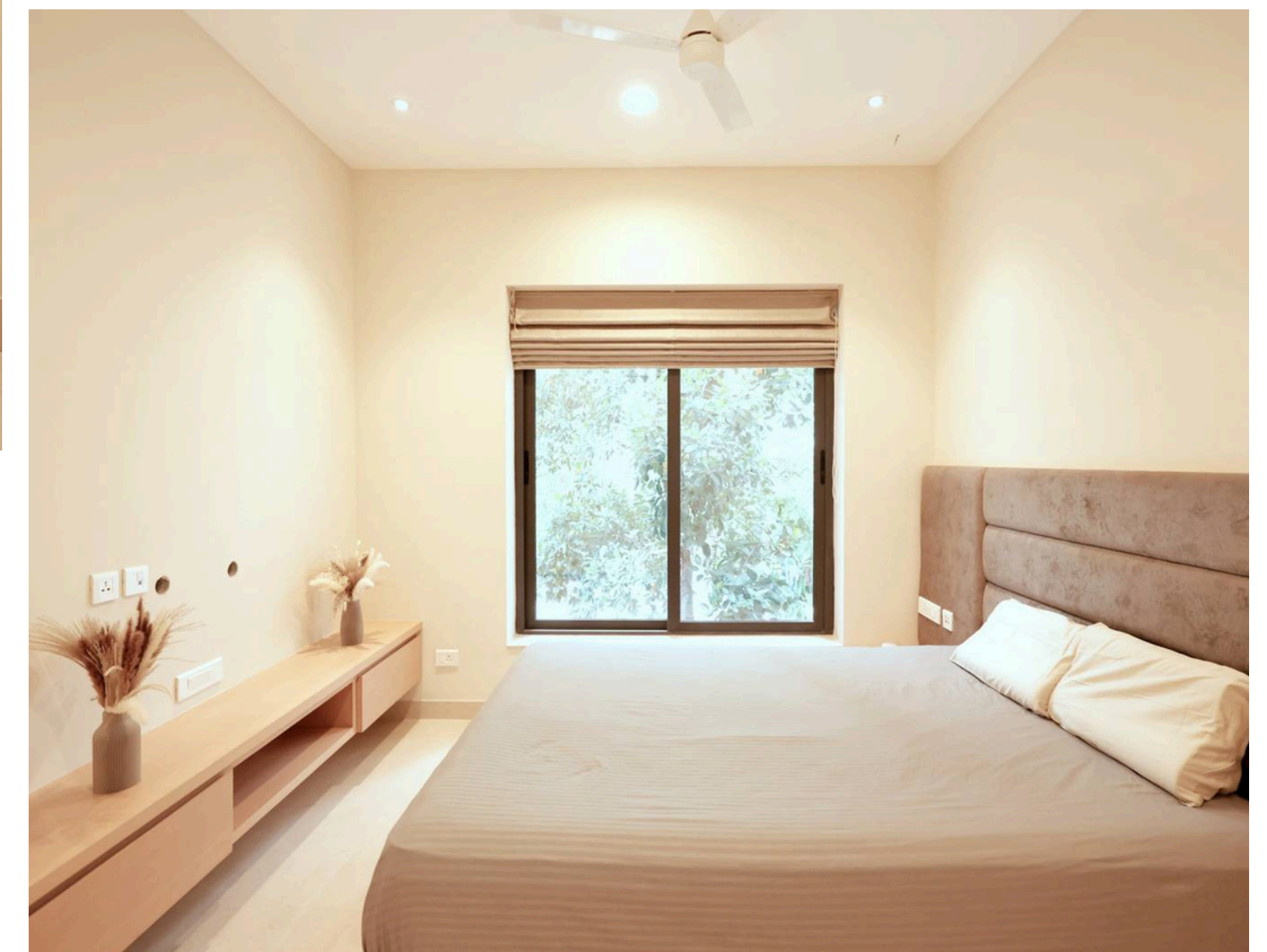
Elegant Dining Area

Situated centrally within the layout, the dining area receives abundant natural light through wide windows, offering pleasant outdoor views while maintaining a smooth and comfortable flow with the surrounding living and kitchen spaces.



Kitchen

Planned in an efficient U-shaped configuration, the kitchen provides generous counter space, a practical island, and bright natural light from the window above the sink, ensuring a functional and well-lit cooking environment.



Kids BedRoom

Highlighted by a comfortable padded headboard bed, the bedroom feels bright and spacious thanks to a large window with a Roman blind that enhances ventilation and frames relaxing outdoor views.



Second Floor

LEGEND

- BALCONY
- LIFT LOBBY
- LIFT
- POOJA AREA
- FAMILY AREA
- SITOUT
- BEDROOM - 3
- BALCONY
- DRESSING AREA
- TOILET
- BEDROOM - 4
- DRESSING AREA
- TOILET
- BEDROOM - 5
- BALCONY
- DRESSING ROOM
- TOILET



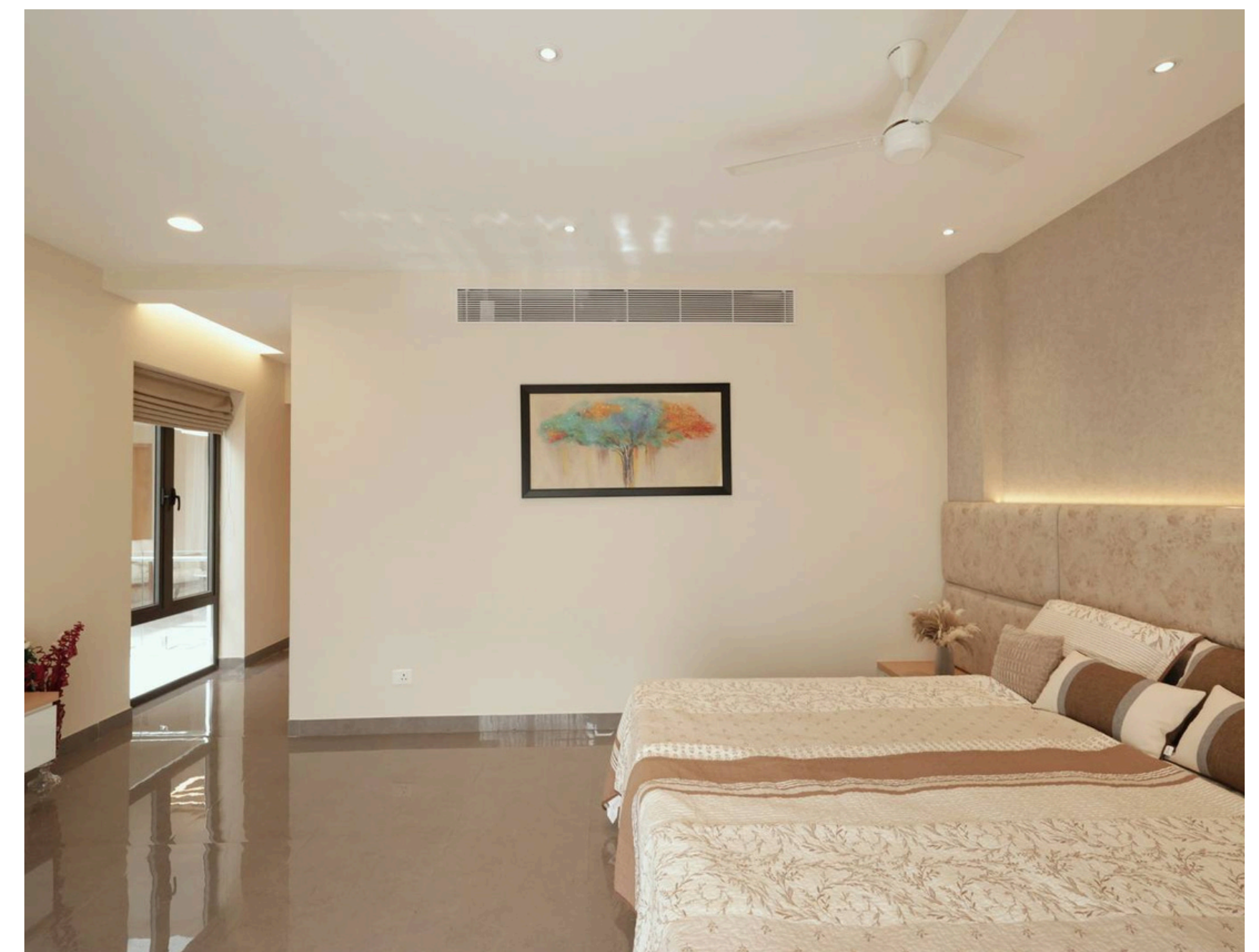
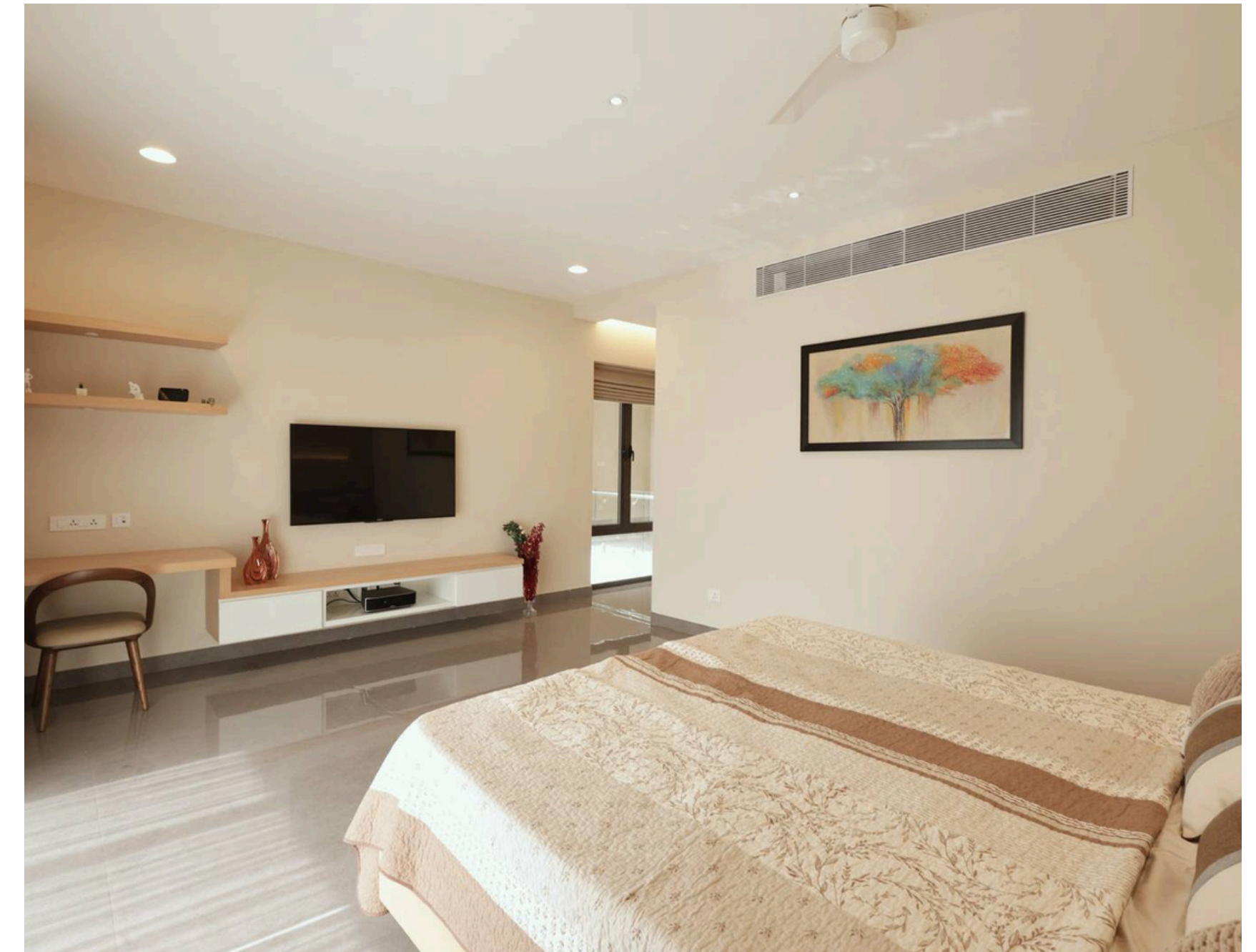
Sit Out Space

The sitout features large sliding glass doors that connect seamlessly to the balcony, creating an extended living space enhanced by natural light, comfortable seating, warm accents, and visual links to surrounding areas.



BedRoom - 3

The master bedroom is spacious and elegant, featuring coordinated earthy tones, a stylish headboard wall, large windows, a serene balcony view, and a well-designed bathroom with a refined grey theme.





BedRoom - 4

This bedroom offers a bright, modern atmosphere with light tile flooring, wooden furniture, and large windows that bring natural light, greenery views, and fresh ventilation, complemented by a serene, spa-inspired bathroom.

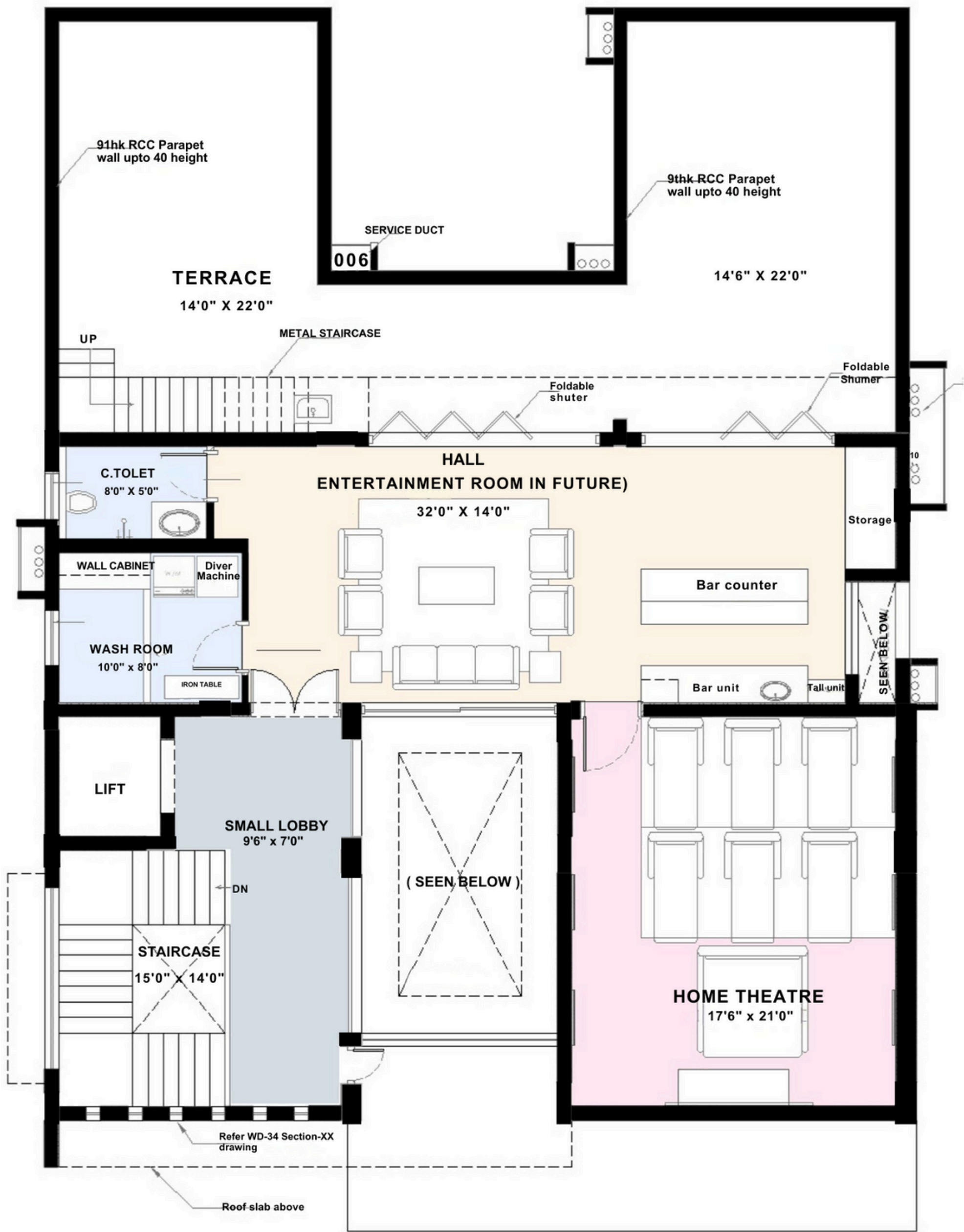




BedRoom - 5

It includes a large window with sheer curtains, soft cove lighting, and an upholstered headboard wall, creating a cozy atmosphere with a clear view of the floating TV unit and workspace.





Third Floor

LEGEND

- SMALL LOBBY
- LIFT
- PARTY HALL
- WASH ROOM
- C.TOILET
- BAR COUNTER
- BAR UNIT
- HOME THEATRE
- STORAGE ROOM
- TERRACE



Party Hall

This party hall features expansive floor-to-ceiling sliding glass doors, a long bar counter, and cozy seating, creating a bright, inviting space that seamlessly connects to the outdoor terrace for social gatherings.



Home Theater

The home theater includes three rows of plush seating, dark-toned interiors, and acoustic wall panels that enhance sound quality, creating an immersive, cinema-like viewing experience within a comfortable, dedicated space.



Terrace

The terrace offers seamless indoor-outdoor flow through large glass doors and features low parapet walls for safety, providing open views and a spacious area ideal for relaxation or social gatherings.

