

**ANSARI<sup>TM</sup>**  
ARCHITECTS

**MADURAI PALACE**







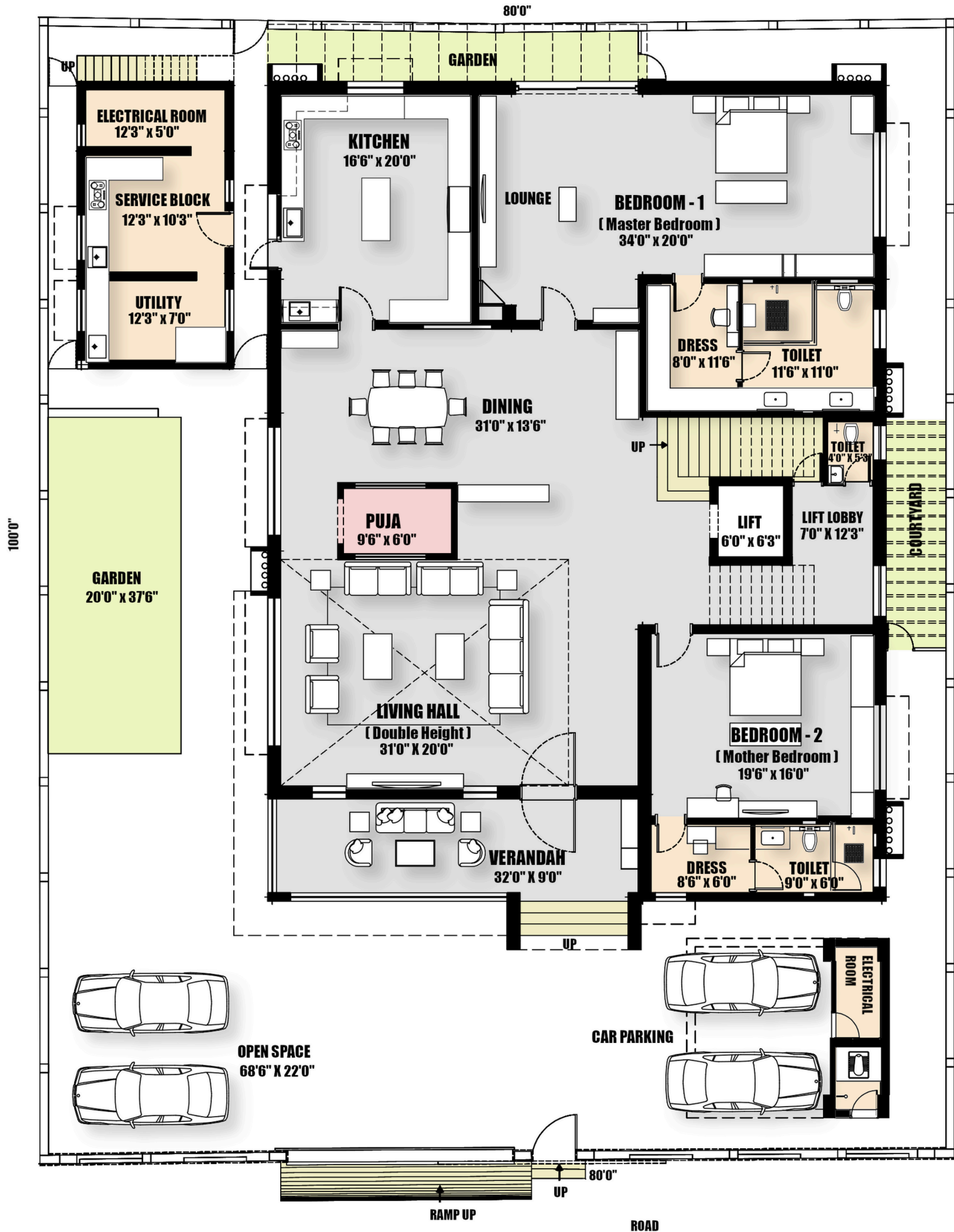
A symmetrical linear layout leads to the entrance, with gentle level changes, stone and travertine finishes, dark accents, soft lighting, and greenery creating a calm, elegant entry.

**Project Location** : Madurai  
**Architectural Firm** : Ansari Architects  
**Principal Architect** : Dameem Ansari,  
Jaffer Arshad Ansari

---

Plot Area : 8,000 Sq. Ft  
No. Of Car Park : 1  
No. Of Rooms : 5  
Facing : North  
Built - up Area : 11,000 Sq. Ft





GROUND FLOOR PLAN



## Ground Floor

### LEGEND

- CAR PARKING
- GARDEN
- SERVANT TOILET
- ELECTRICAL ROOM
- VERANDAH
- OPEN SPACE
- LIVING
- PUJA
- DINING
- LIFT LOBBY
- KITCHEN
- UTILITY
- SERVICE BLOCK
- BEDROOM - 1
- DRESS, TOILET
- BEDROOM - 2
- DRESS, TOILET
- TOILET
- COURTYARD





---

### Living Area

A double-height living area feels open and dramatic, with a balanced seating layout that encourages conversation. Natural light highlights the marble flooring, while dark marble walls add depth. Warm tones of red, beige, wood, and metal create a refined yet welcoming space.

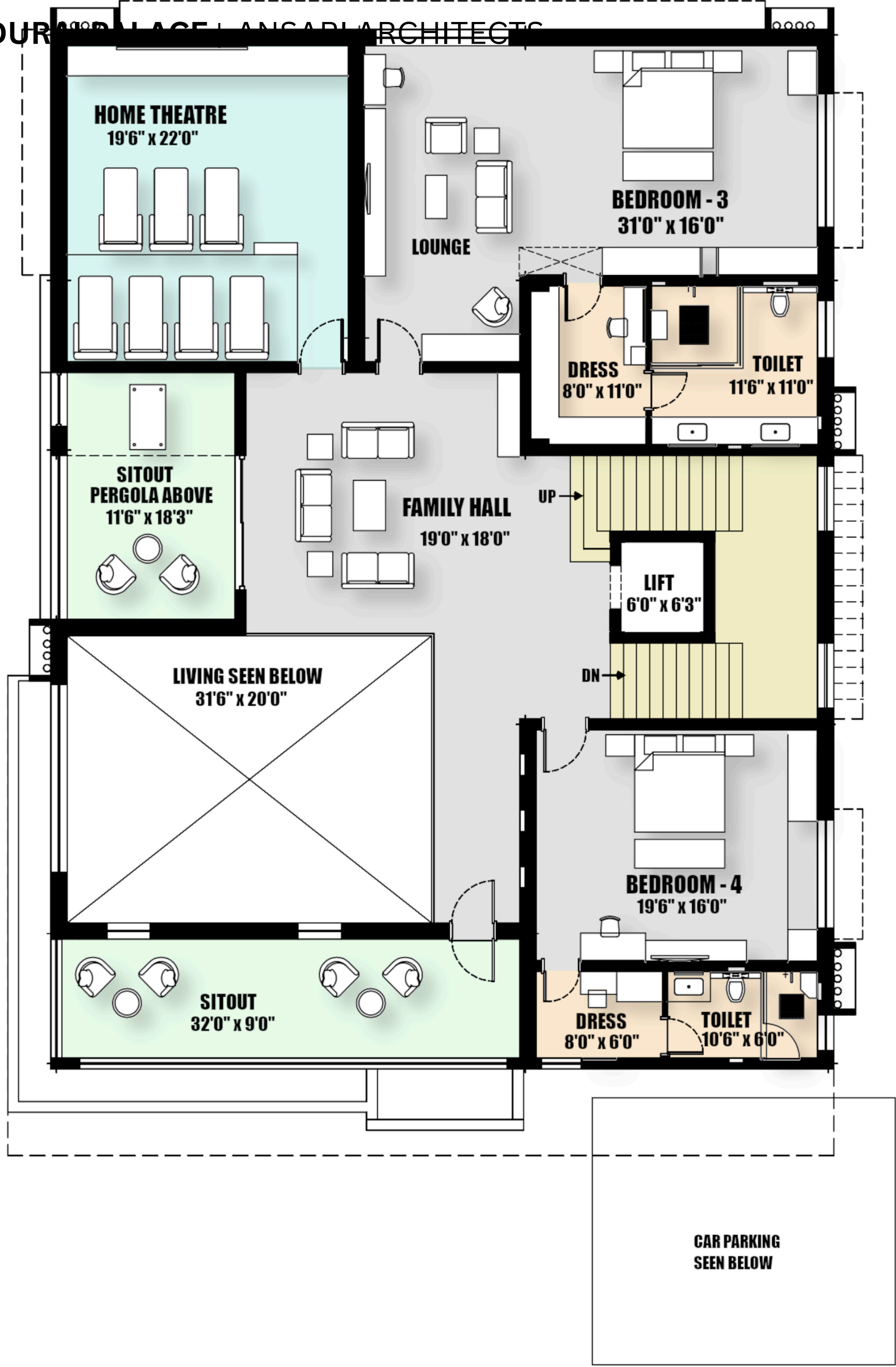




### Dining Area

A marble dining table anchors the space, paired with red chairs for symmetry and contrast. Layered marble, warm wood accents, and soft lighting create an elegant and inviting dining area.





FIRST FLOOR PLAN



First Floor

LEGEND

- FAMILY AREA
- SITOUT AREA
- HOME THEATRE
- BALCONY
- LIFT
- BEDROOM - 3
- TOILET
- DRESS
- BEDROOM - 4
- TOILET
- DRESS





---

## Family Hall / Balcony

An open family lounge overlooks the lower level, defined by glass railings and minimal furniture. Marble floors, warm wood accents, soft lighting, and subtle gold details create a refined yet comfortable family space.





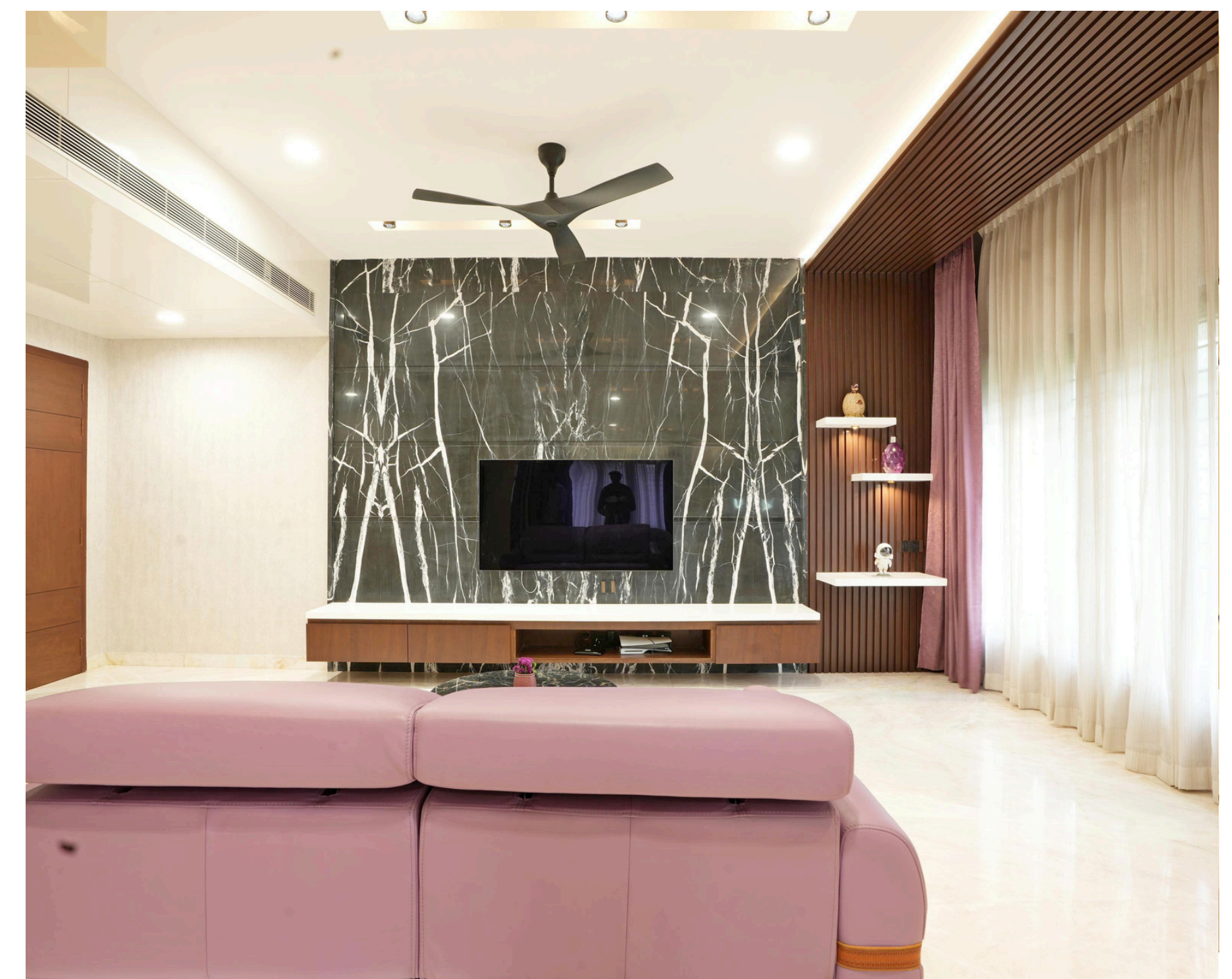


---

## Guest Bedroom

A sit-out with a pergola connects indoors and outdoors, featuring durable stone flooring, white walls, wooden doors, and black-framed windows, with greenery adding warmth and charm.





### BedRoom - 3

The open-plan bedroom suite combines sleeping, lounging, and dressing areas. Lavender and beige tones, warm wood accents, and high-gloss marble floors create a calm, elegant atmosphere. A lavender sofa subtly separates zones, while mirrored wardrobe panels and layered lighting add depth and luxury.



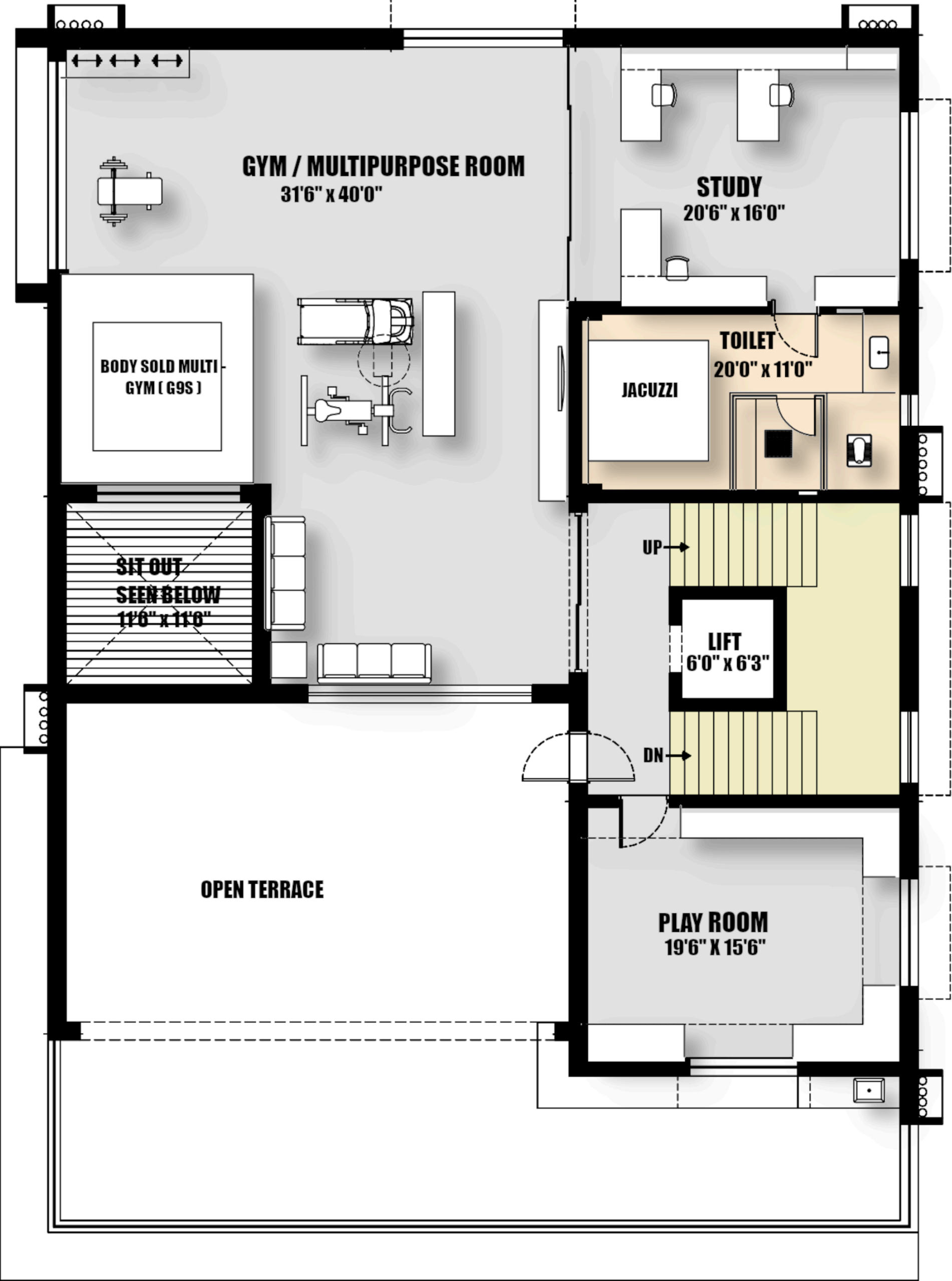


---

## Bedroom - 4

The bedroom has an open, airy layout with a central bed, a window-side reading nook, and a calm aqua-blue and white palette. Champagne-framed wardrobes, black-and-white marble, wooden slats, and beige flooring add elegance and brightness.





SECOND FLOOR PLAN



Second Floor

LEGEND

- PLAY ROOM
- GYM
- STUDY ROOM
- TOILET
- OPEN TERRACE





---

## Play Room - Kids

The room serves as a dedicated play area with ample open floor space. Built-in black granite shelves along both walls maximize storage while keeping the center clear. Cream marble flooring adds elegance, and colorful toys, baskets, and a play tent bring vibrancy and energy to the space.





---

## Gym Area

The gym is a dedicated, open fitness zone with heavy equipment along the perimeter and a clear central area for movement. Mirrored walls enhance light and depth, while wooden flooring, beige walls, dark ceiling accents, and black-and-chrome machines create a warm, modern, and focused environment.





---

## Study Area

The room has a dual workstation with symmetrical desks, dark wood and black finishes, and white marble floors. Open and closed storage keeps it organized, while glass doors bring in light and connect to an outdoor space, doubling as a fitness or training area.







---

### Open Terrace

A semi-open recreational space with a table tennis setup and traditional swing, featuring stone floors, wooden ceilings, and textured walls. Natural light, ventilation, and layered lighting create a comfortable, flexible, and modern-tropical environment.



