

**ANSARI<sup>TM</sup>**  
ARCHITECTS

**MEGA MARBLE  
HOUSE**







The veranda has wide granite steps and a servant room with a large glass window for security. Walnut veneer detailing adds warmth and elegance, enhancing the modern design.

**Project Location** : Nungambakkam  
**Architectural Firm** : Ansari Architects  
**Principal Architect** : Dameem Ansari,  
Jaffer Arshad Ansari

---

Plot Area : 2,800 Sq. Ft  
No. Of Car Park : 1  
No. Of Rooms : 4  
Facing : North  
Built - up Area : 7,000 Sq. Ft





## LEGEND

- CAR PARKING
- GARDEN
- WATCHMAN ROOM
- ELECTRICAL ROOM
- TOILET
- LOBBY
- LIFT
- COURTYARD
- VERANDAH
- OFFICE ROOM





## Lobby Area

The lobby features Italian Royal Crema marble, cantilevered steps, and a walnut console, creating a bright, elegant entrance. Natural light and a stainless-steel glass lift enhance its luxury and functionality.

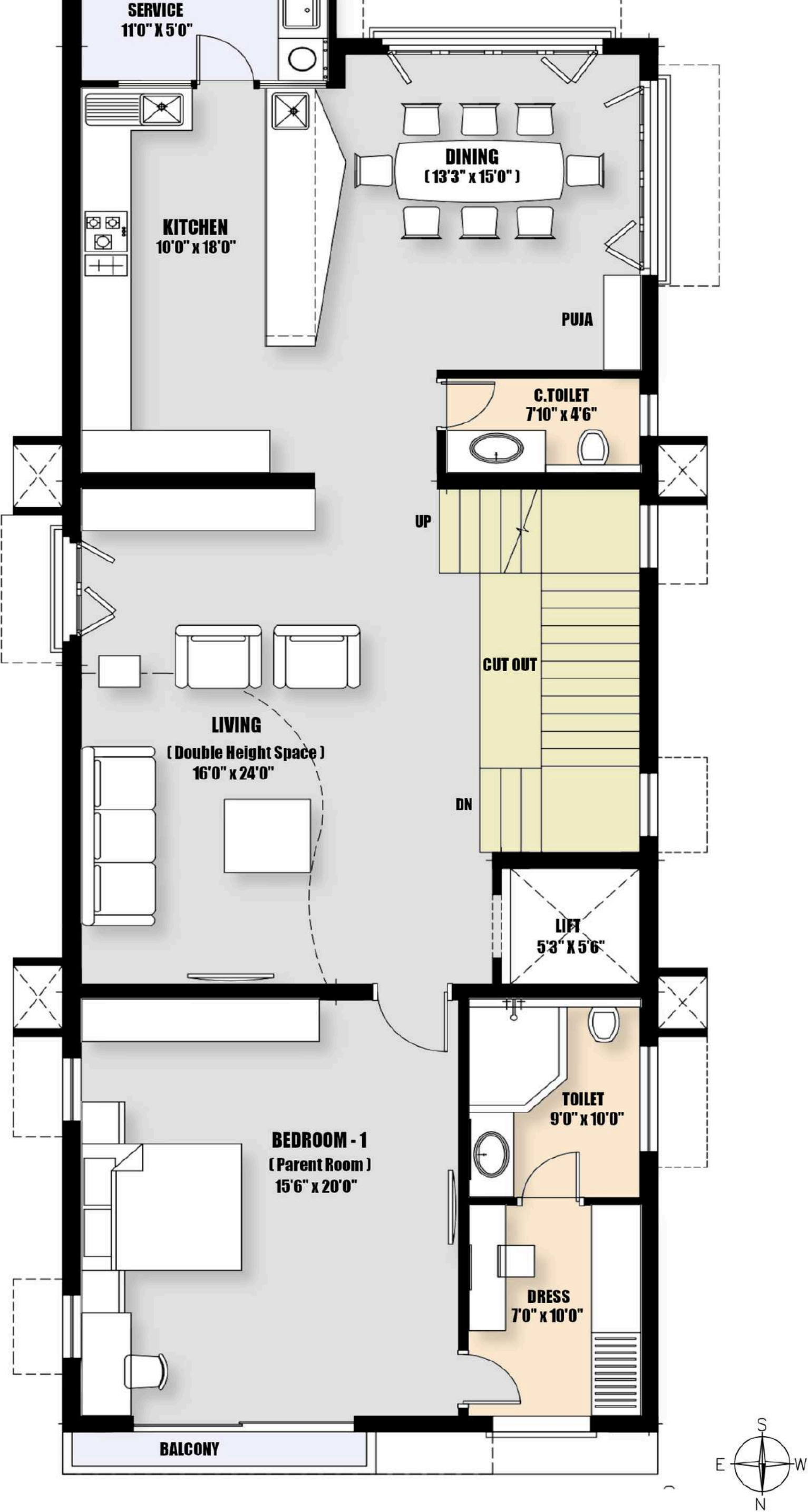




## Office Room

The office features a warm wooden theme with a large desk, custom cabinets, and a veneer-finished TV unit. PU glossy coatings add texture, creating a stylish and cohesive workspace.





FIRST FLOOR PLAN



First Floor

LEGEND

- LIVING
- DINING
- KITCHEN
- SERVICE
- PUJA
- BEDROOM -1
- DRESS
- TOILET
- C.TOILET
- LIFT





## Living Area

The living room features a double-height design with Italian marble walls, teak furniture, and beveled glass, enhanced by wired automation and custom PU-coated display units.





## Kitchen

The open-concept kitchen and dining area feature handle-less acrylic cabinets, seamless quartz counters, and concealed appliances for a clean, elegant look. A dedicated pooja corner and thoughtfully designed storage enhance functionality while maintaining a modern, cohesive aesthetic.

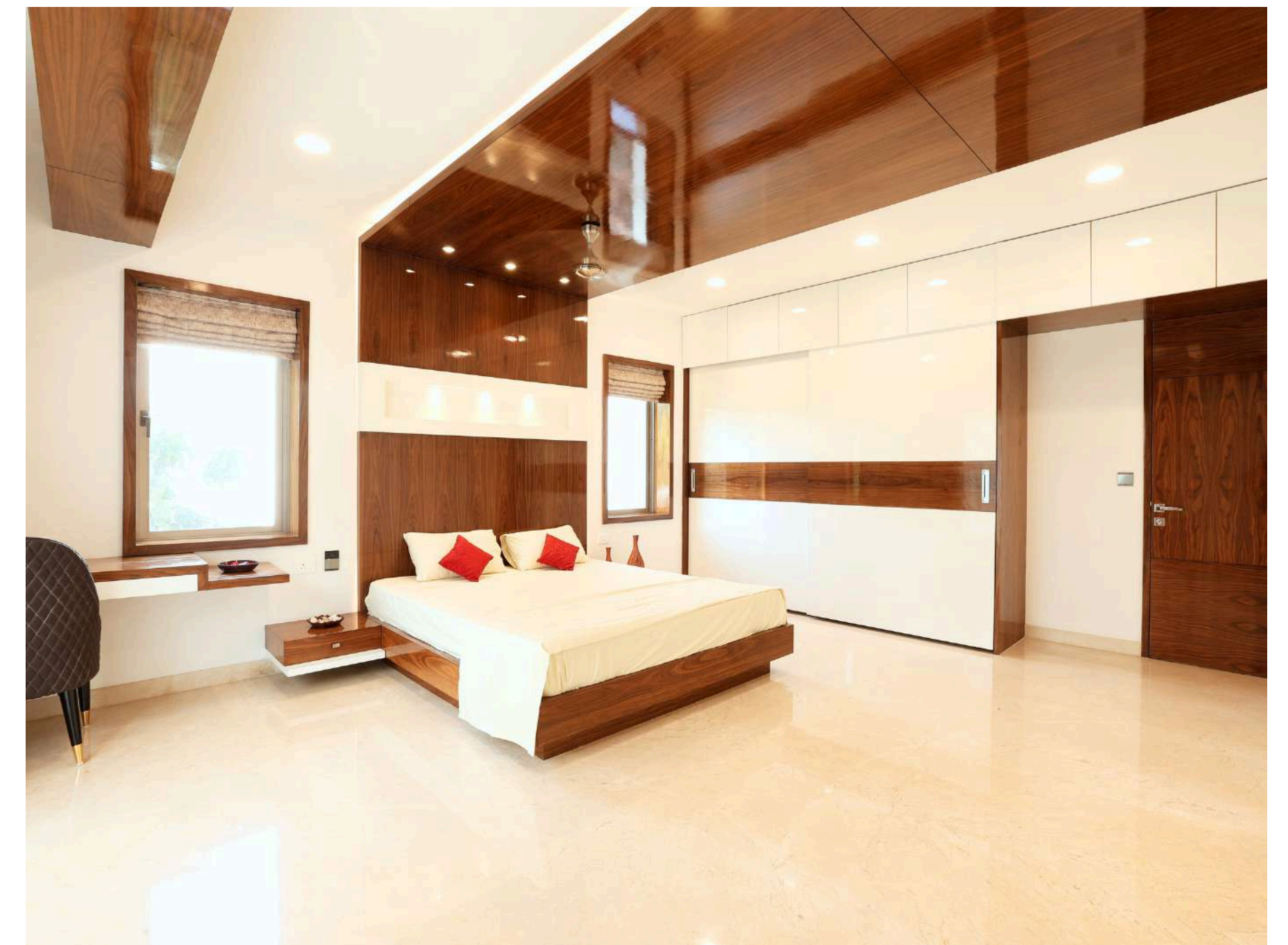




## Dining Area

The open-concept kitchen and dining area feature handle-less acrylic cabinets, seamless quartz counters, and concealed appliances for a clean, elegant look. A dedicated pooja corner and thoughtfully designed storage enhance functionality while maintaining a modern, cohesive aesthetic.

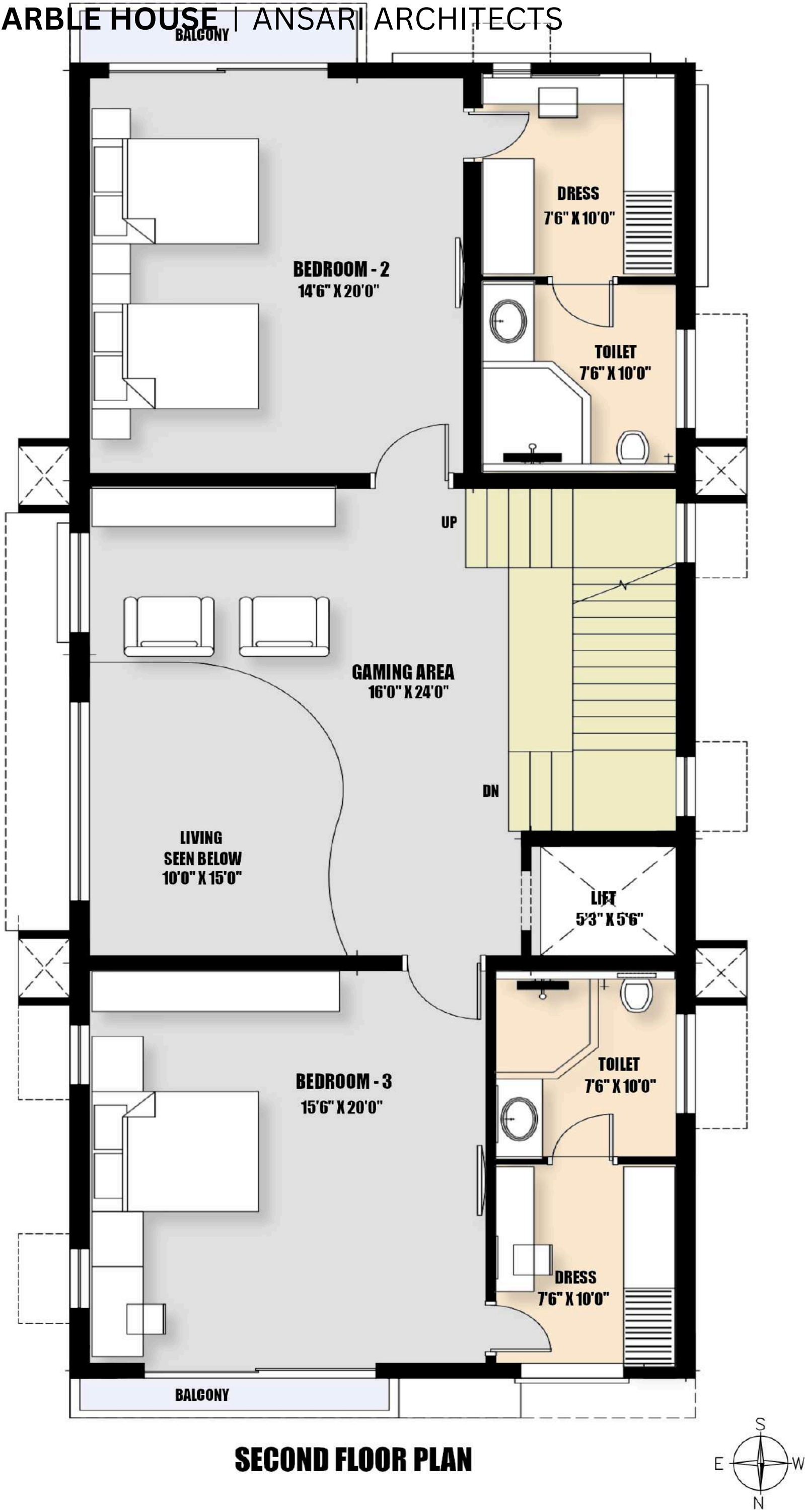




## Bedroom - 1

The first-floor bedroom is finished in soft, neutral tones with veneer detailing and a fabric-upholstered headboard, filled with natural light from front-facing windows and a balcony. Automated curtains and concealed services enhance comfort, while the wardrobe and dressing area complete a calm, refined retreat.





Second Floor

LEGEND

- GAMING AREA
- BEDROOM - 2
- DRESS
- TOILET
- BALCONY
- LIFT
- BEDROOM - 3
- DRESS
- TOILET
- BALCONY





---

## Gaming Area

The gaming area overlooks the double-height living space and includes a concealed projector, rich sound, and Italian marble floors. Curved wood handrails, laminated glass, and tall Juliet balcony windows add elegance, safety, and natural light.





## BedRoom - 2

Bedroom 2 is a sophisticated guest suite with American walnut veneer, PU-coated finishes, and soft upholstered panels. A south-facing balcony, concealed services, and ducted AC ensure comfort, elegance, and natural ventilation.

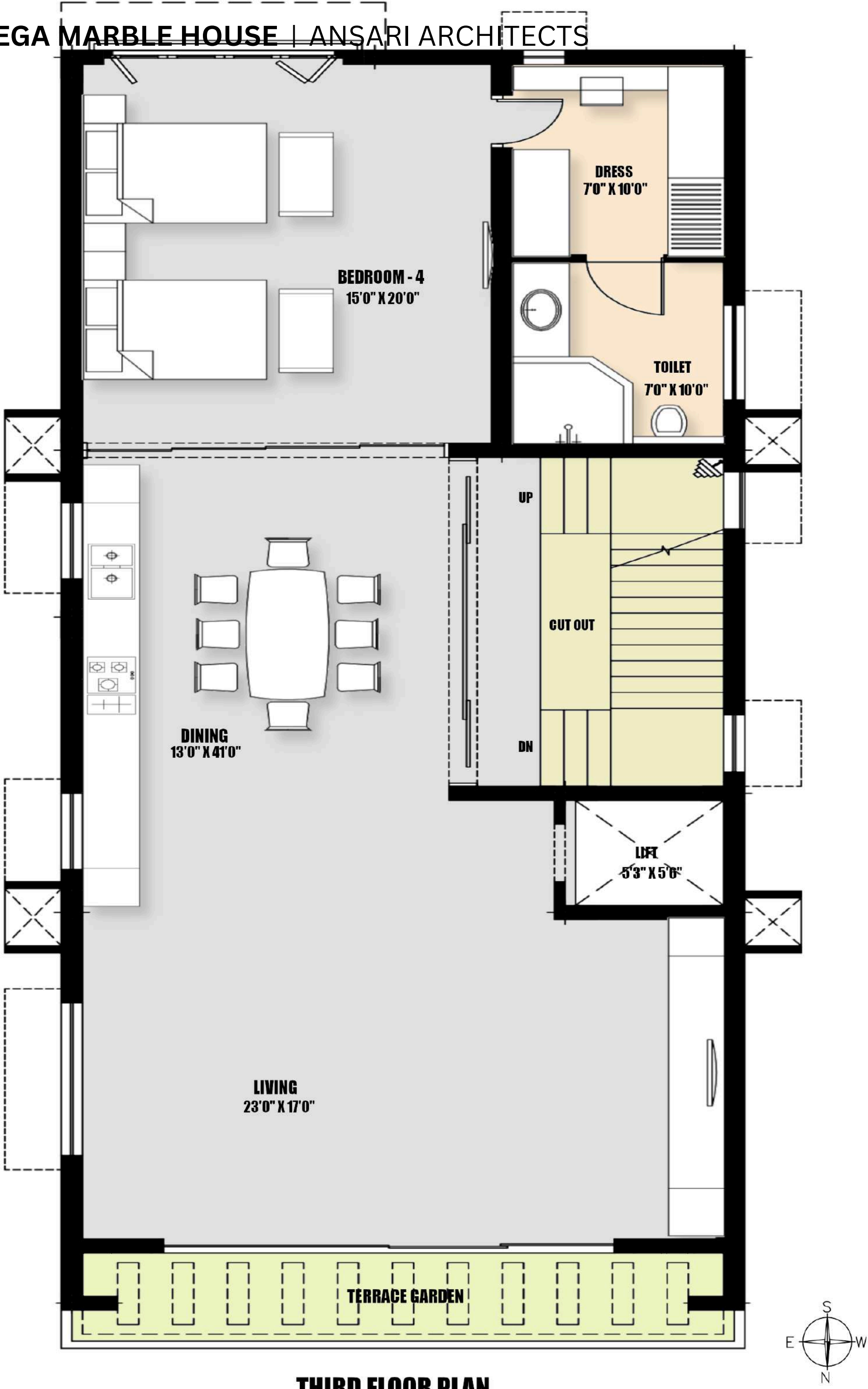




**Bedroom -3**

This north-side suite features a spacious layout with an American walnut veneer dressing area, sliding wardrobes, and integrated TV units. Large windows and a balcony bring in abundant natural light, while concealed services and smart automation enhance comfort and functionality.





Third Floor

LEGEND

- DINING
- LIVING
- TERRACE GARDEN
- PENTHOUSE
- BEDROOM - 4
- DRESS
- TOILET
- LIFT

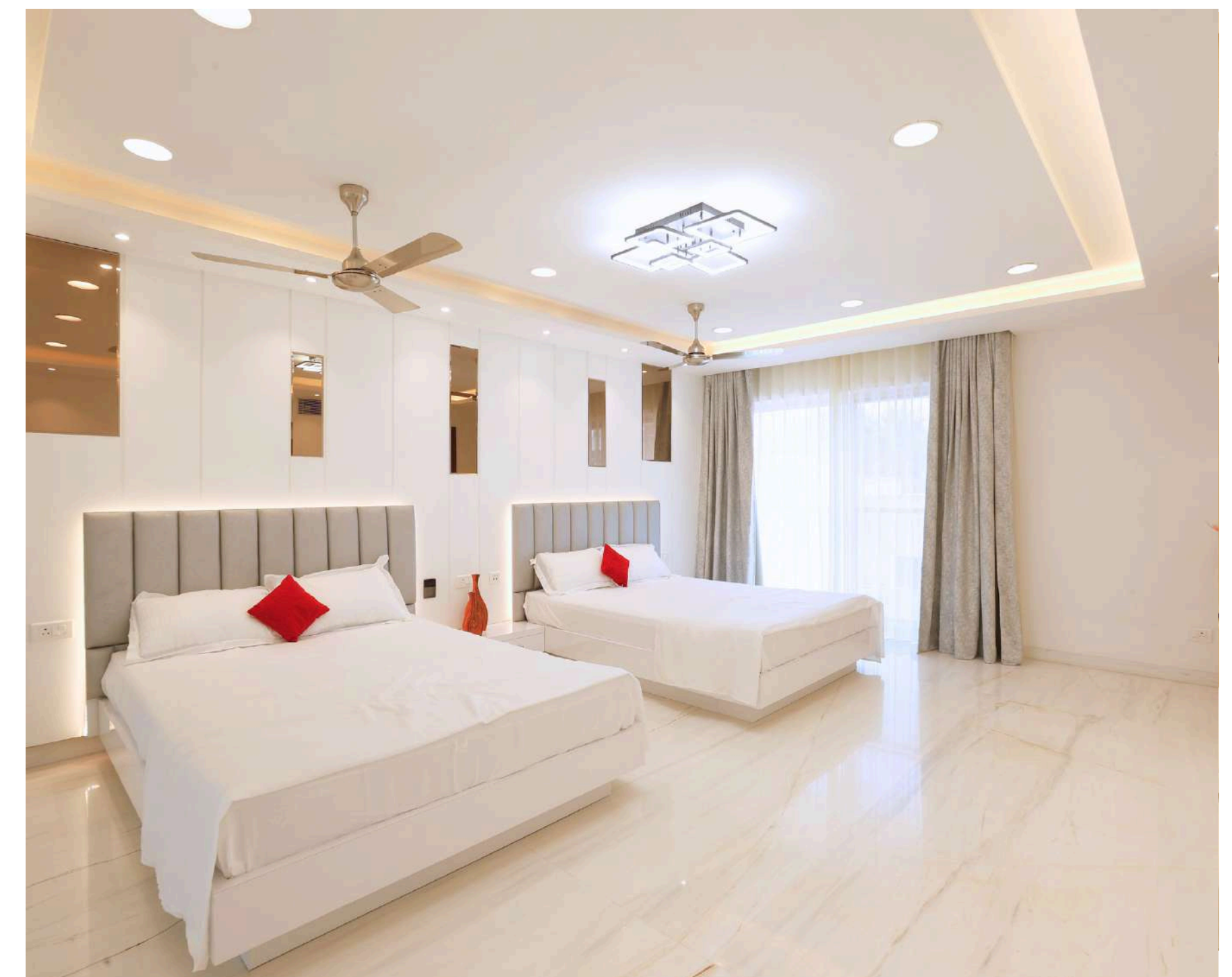
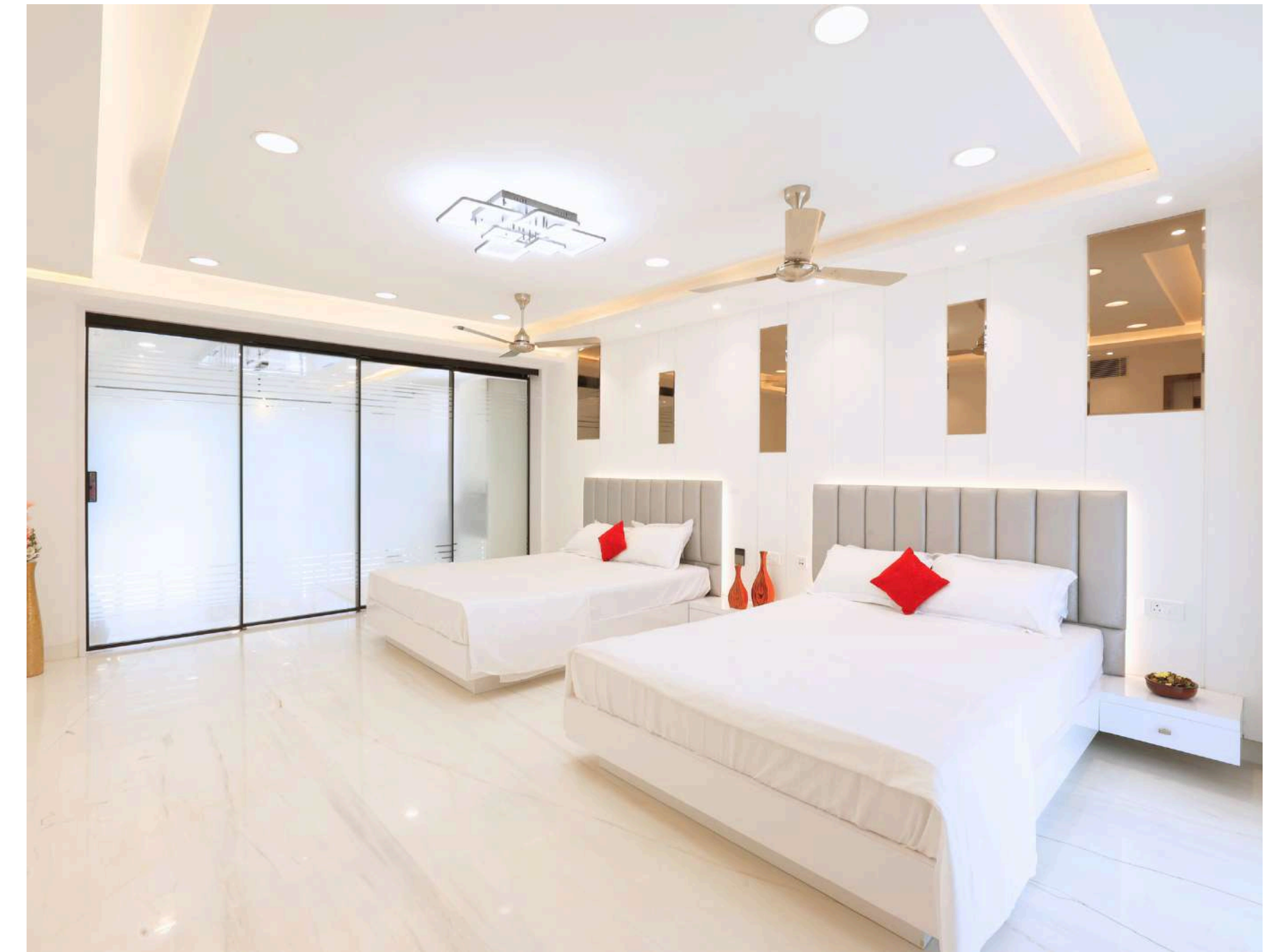




PENTHOUSE

The penthouse is a bright, elegant single-bedroom unit with a white-and-grey theme, golden spider marble floors, and integrated living, dining, and kitchen areas. Concealed AC, smart automation, and custom cabinetry ensure comfort, functionality, and a seamless luxury experience.





## Bedroom - 4

The white-themed bedroom offers a sleek, telescopic sliding door, terrace access, and a matching dressing room and bathroom. Its design maximizes natural light, panoramic views, and effortless functionality with modern automation.



