

ANSARI<sup>TM</sup>  
ARCHITECTS

MAHARAJA  
HOUSE





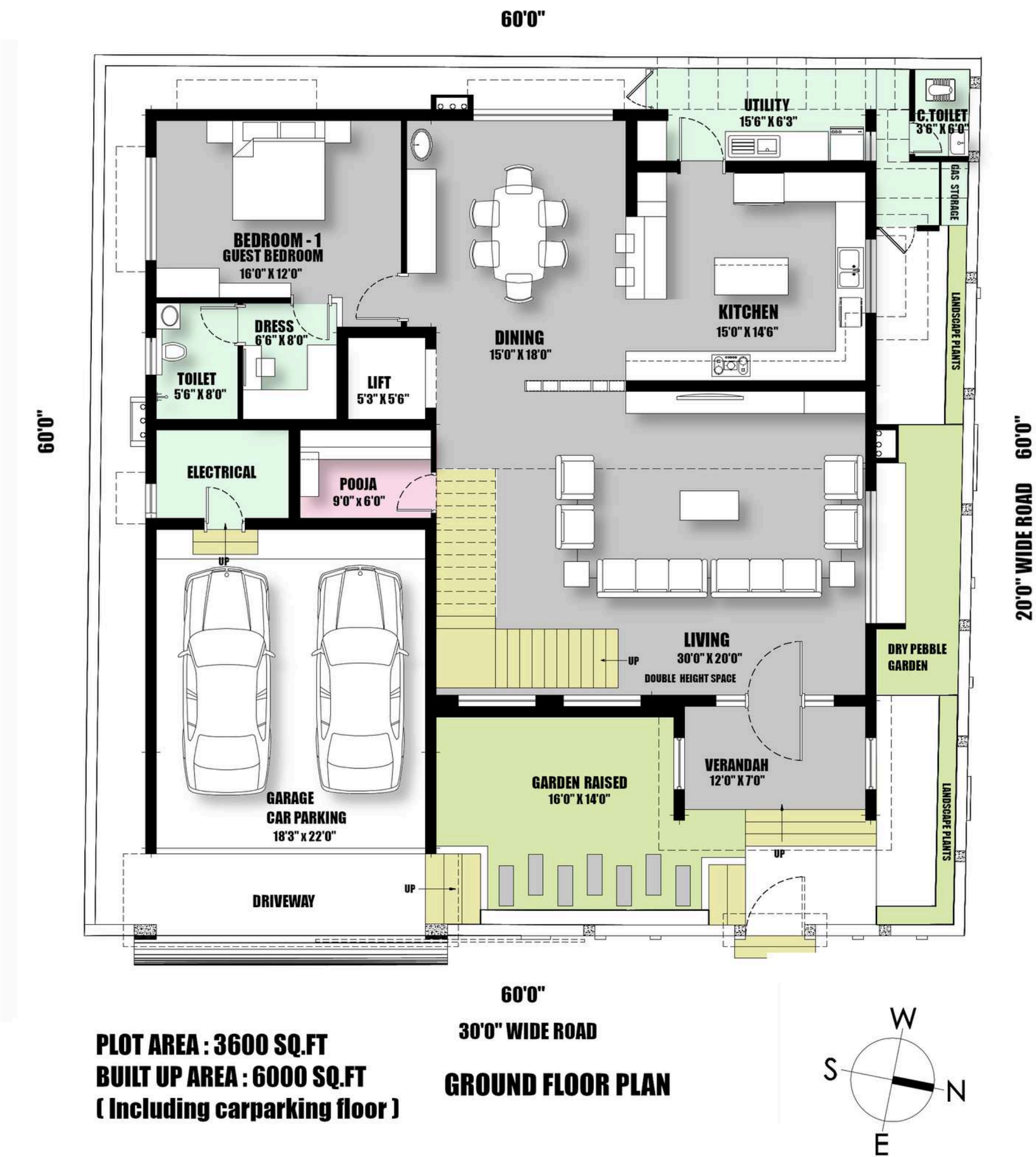


**Project Location** : Pondicherry  
**Architectural Firm** : Ansari Architects  
**Principal Architect** : Dameem Ansari,  
Jaffer Arshad Ansari

---

Plot Area : 3,600 Sq.Ft  
No. Of Car Park : 1  
No. Of Rooms : 4  
Facing : North  
Built - up Area : 6,000 Sq.Ft





## Ground Floor

### LEGEND

- CAR PARKING
- ELECTRICAL
- GARDEN RAISED
- VERANDAH
- LIVING AREA
- DRY PEBBLE GARDEN
- DINING AREA
- KITCHEN
- UTILITY AREA
- C. TOILET
- POOJA AREA
- LIFT
- BEDROOM - 1
- DRESSING ROOM
- TOILET





## Double Height Living

This east-facing home showcases a marble-clad metal staircase, expansive glazing, airtight frames, and full automation. Vastu-aligned planning, premium materials, refined finishes, and integrated services create a functional, elegant, and meticulously detailed living environment.





## Elegant Kitchen

Built for efficiency and style, this kitchen features a spacious island, a cohesive grey palette, acrylic and high-gloss finishes, tinted glass profiles, and quartz surfaces. Gesture-controlled appliances, concealed elements, pull-outs, and organized pantry units ensure maximum functionality and refined elegance.





### Elegant Dining Space

Designed for clarity and comfort, this home features large glass windows for excellent ventilation, a light grey interior with wooden accents, and a sleek handle-less African Sapele crockery unit with a quartz top. The open-plan layout remains spacious, enhanced by refined materials and detailed glass elements.

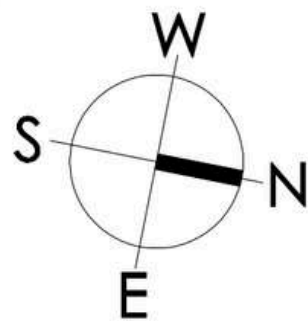




**Bedroom - 1**

Styled in a refined grey-beige palette, the bedroom features coordinated laminates, elegant wallpaper, and Diana marble flooring. The adjoining dressing room offers L-shaped wardrobes, a cosmetic shelf, and a smart mirror. The attached toilet maintains the theme with large brown tiles, marble accents, and a concealed tank for a seamless finish.





## First Floor

### LEGEND

- FAMILY CUM LIBRARY
- LIFT
- BEDROOM - 2
- DRESSING ROOM
- TOILET
- SITTING WINDOW
- BEDROOM - 3
- BALCONY
- DRESSING ROOM
- TOILET
- BEDROOM - 4
- BALCONY
- DRESSING ROOM
- TOILET





## Family Cum Library

This family-cum-library provides a functional study zone with planned shelving, while the daughter's bedroom showcases Sapele finishes, groove detailing, and teak accents for added elegance.





**Bedroom - 2**

This bedroom features coordinated curtains, cushions, and decor, along with a full-height cushioned headboard and matching wallpaper. A three-side open sitting window adds charm, while the adjoining dressing room and black-and-grey themed toilet provide a cohesive, elegant finish with marble accent and modern fixtures.







**Bedroom - 3**

Blending bold blue and maroon-pink accents, the bedroom features coordinated fabrics, suede-finish cushioning, fluted PU-painted panels, and automated curtains. The dressing room continues the white-and-blue theme with customized wardrobes, while the attached toilet includes marble-finish surfaces, a smart mirror, and a refined grey-and-black palette with modern fixtures.



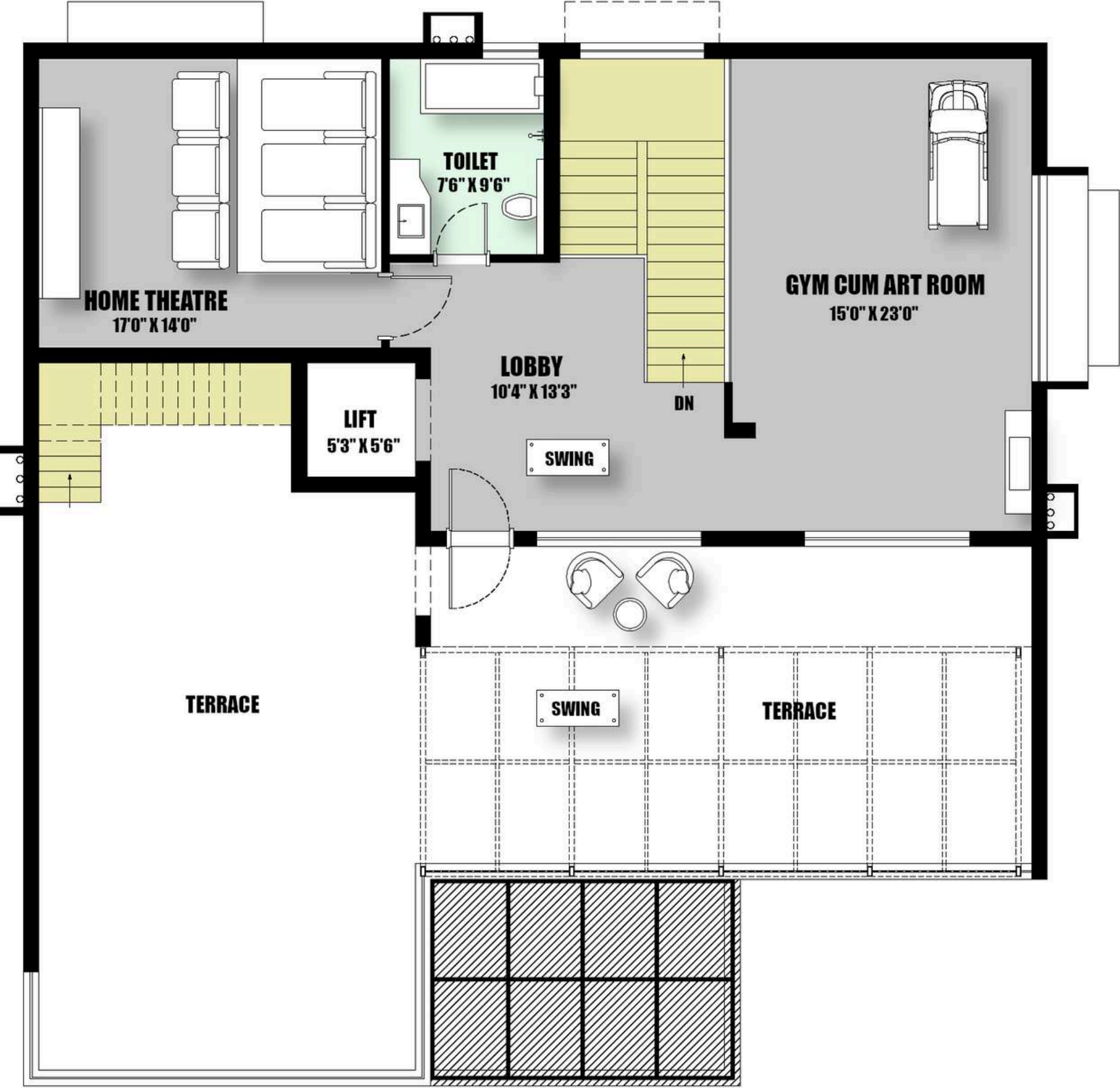


### Bedroom - 4

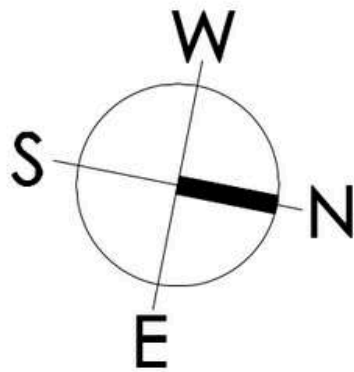
The master bedroom features a private corridor, creating separation from the dressing room and toilet. Designed in a refined grey, black, and white palette, it includes automated curtains, a spacious balcony, extensive wardrobes, and VRF air conditioning. The dressing room offers customized sliding wardrobes, organized fitments, and a dedicated ironing unit.







SECOND FLOOR PLAN

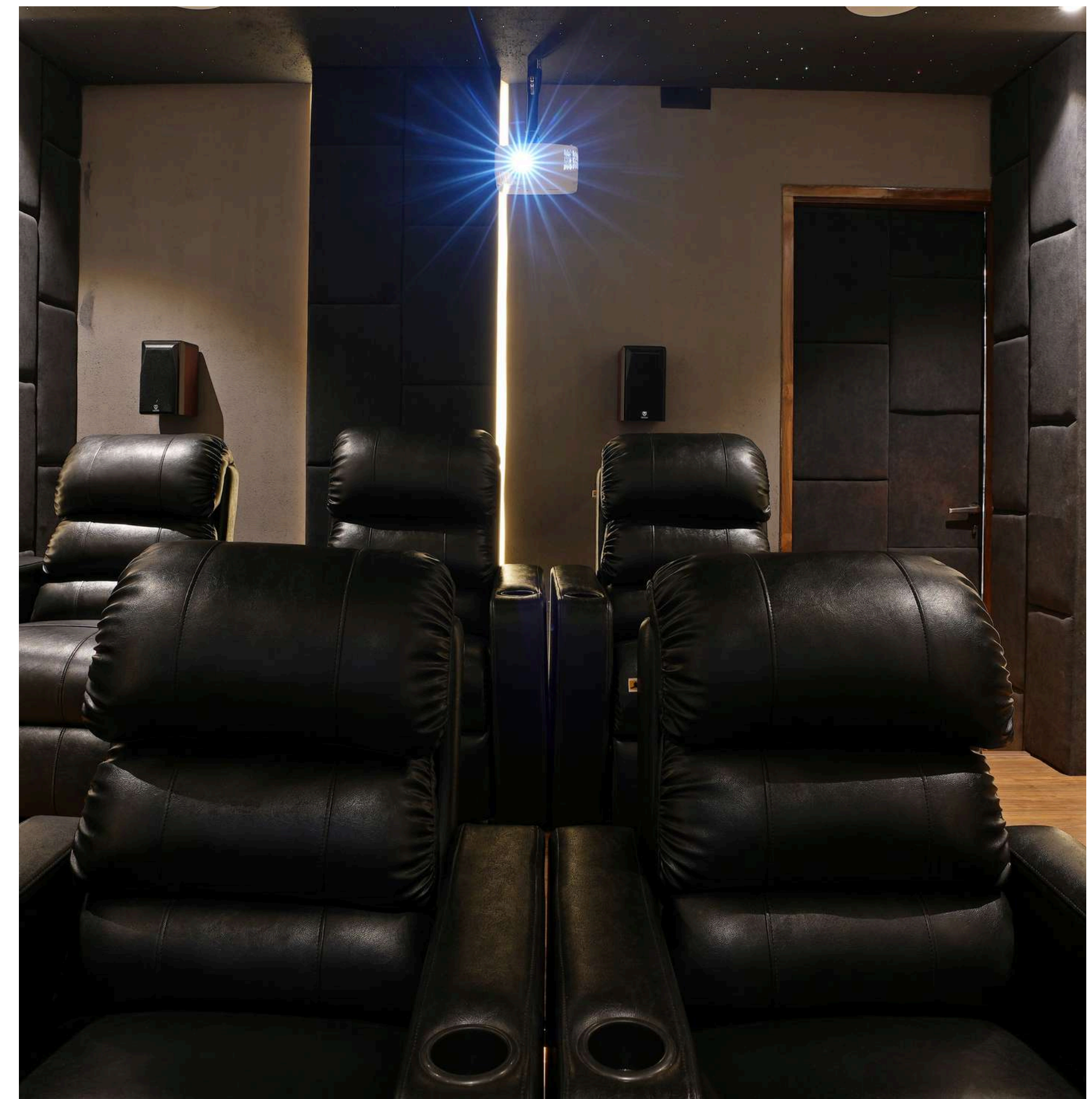


Second Floor

LEGEND

- LOBBY
- LIFT
- HOME THEATRE
- TOILET
- TERRACE
- GYM CUM ART ROOM





---

## Home Theater

Designed for superior performance, this home theater includes acoustic plastering, a 7.1.4 Tonewinner audio system, floating wooden flooring, and dual-level automated recliners. With VRF air conditioning and a 4K Optoma projector, it delivers excellent sound control, comfort, and an immersive cinematic experience





## Terrace Area

This terrace features a signature cut-out pergola, a refined grey theme, glass handrails, patterned tiles, and elegant lighting, while the upper level accommodates VRF units and other essential utilities for convenience.



