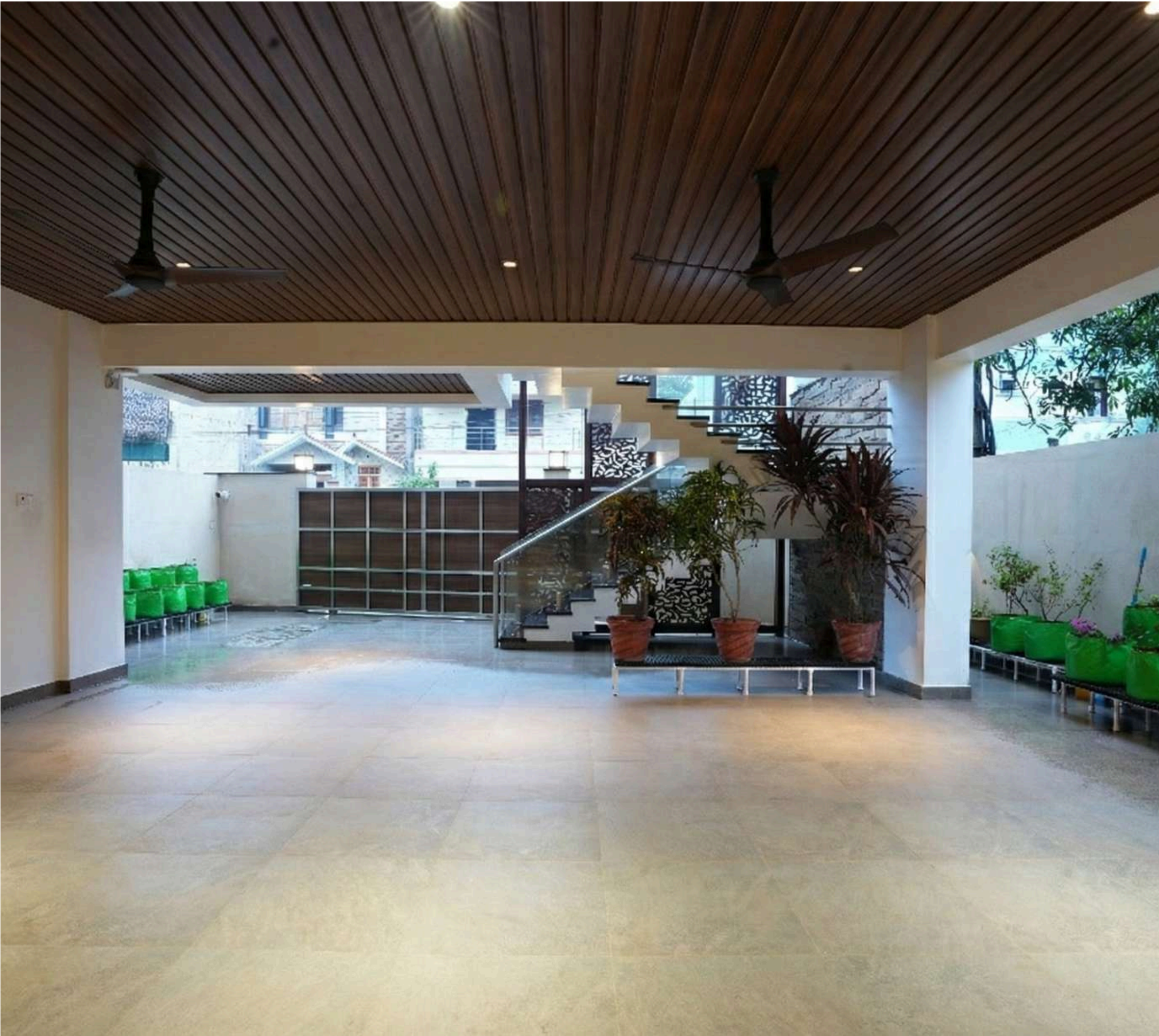


# ANSARI<sup>TM</sup> | LUXURY PERGOLA ARCHITECTS HOUSE







**Project Location** : Madhanandapuram  
**Architectural Firm** : Ansari Architects  
**Principal Architect** : Dameem Ansari,  
Jaffer Arshad Ansari

---

Plot Area : 2,500 Sq.Ft  
No. Of Car Park : 1  
No. Of Rooms : 4  
Facing : North  
Built - up Area : 5,200 Sq.Ft





## Ground Floor

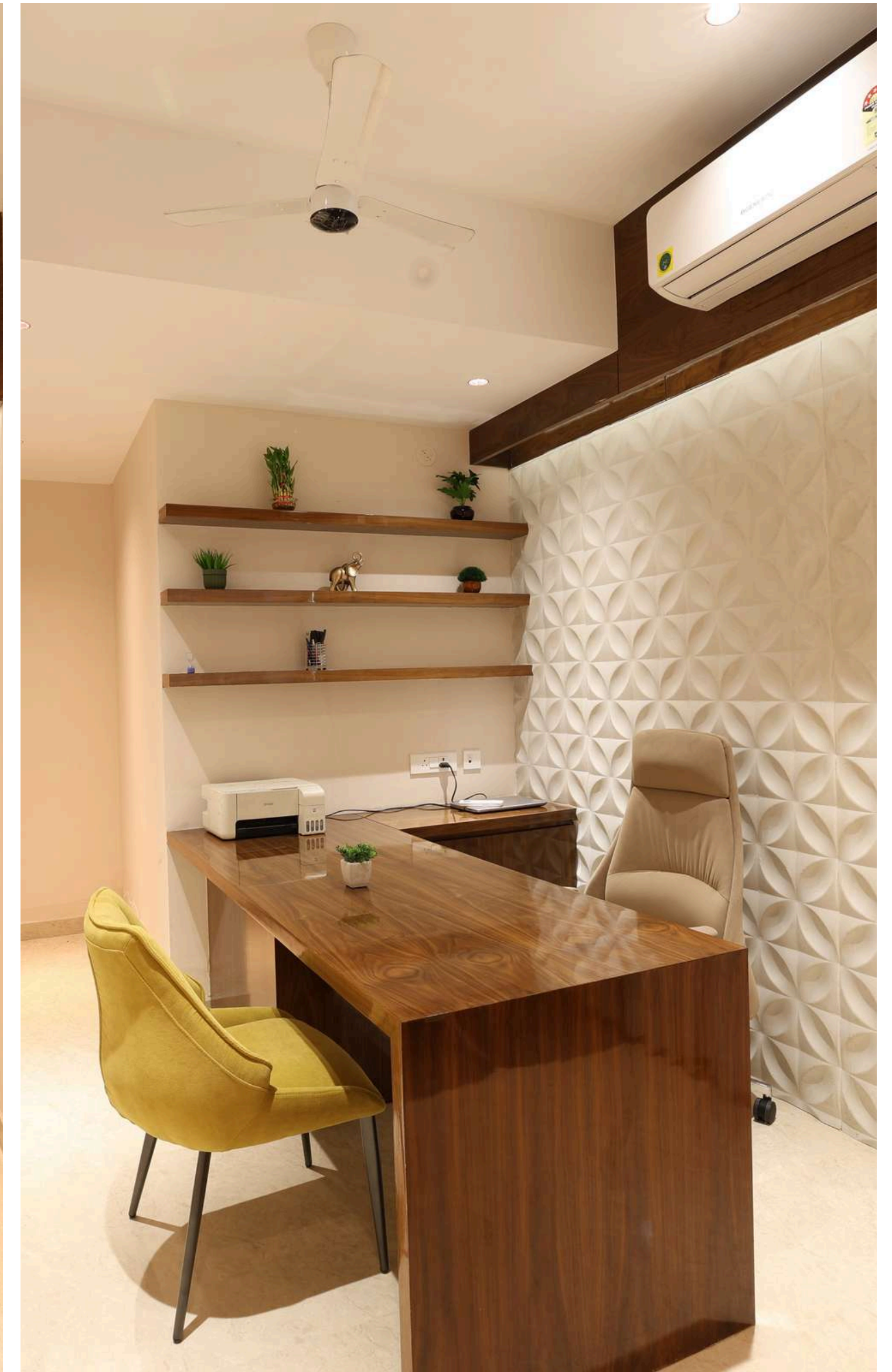
### LEGEND

- CAR PARKING
- VERANDAH
- LIFT
- LIFT LOBBY
- OFFICE ROOM
- SERVANT TOILET
- ELECTRICAL ROOM
- GUEST BEDROOM - 1
- TOILET
- SERVANT ROOM

## Parking Area

A wooden ceiling with recessed lights, stone flooring, decorative wooden doors, ceiling fans, and neatly arranged green potted plants along the side.





## Office Space

Warm-toned office setup featuring a polished wooden desk, textured 3D wall panel, floating wooden shelves with décor, beige flooring, cushioned chairs, ceiling fan, and soft recessed lighting enhancing a professional ambiance.

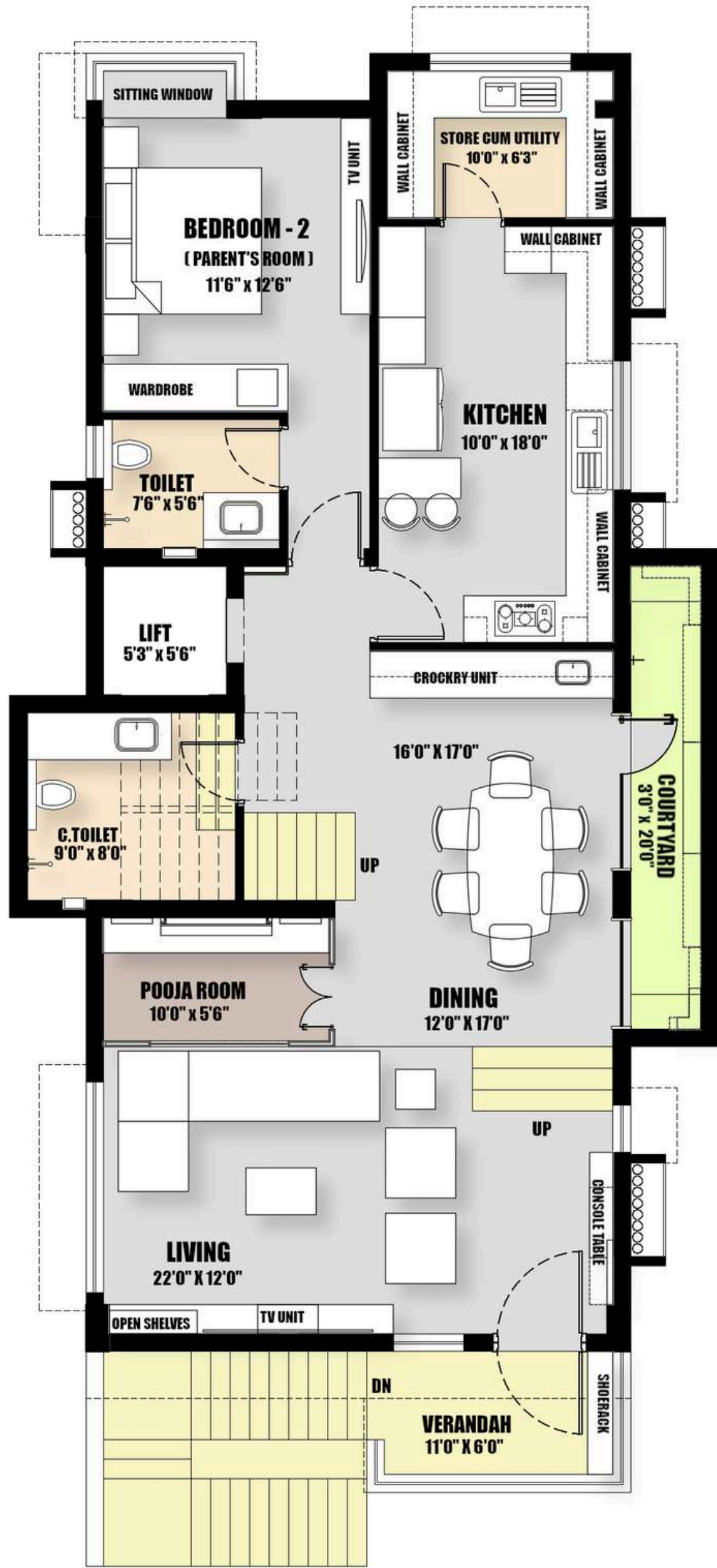




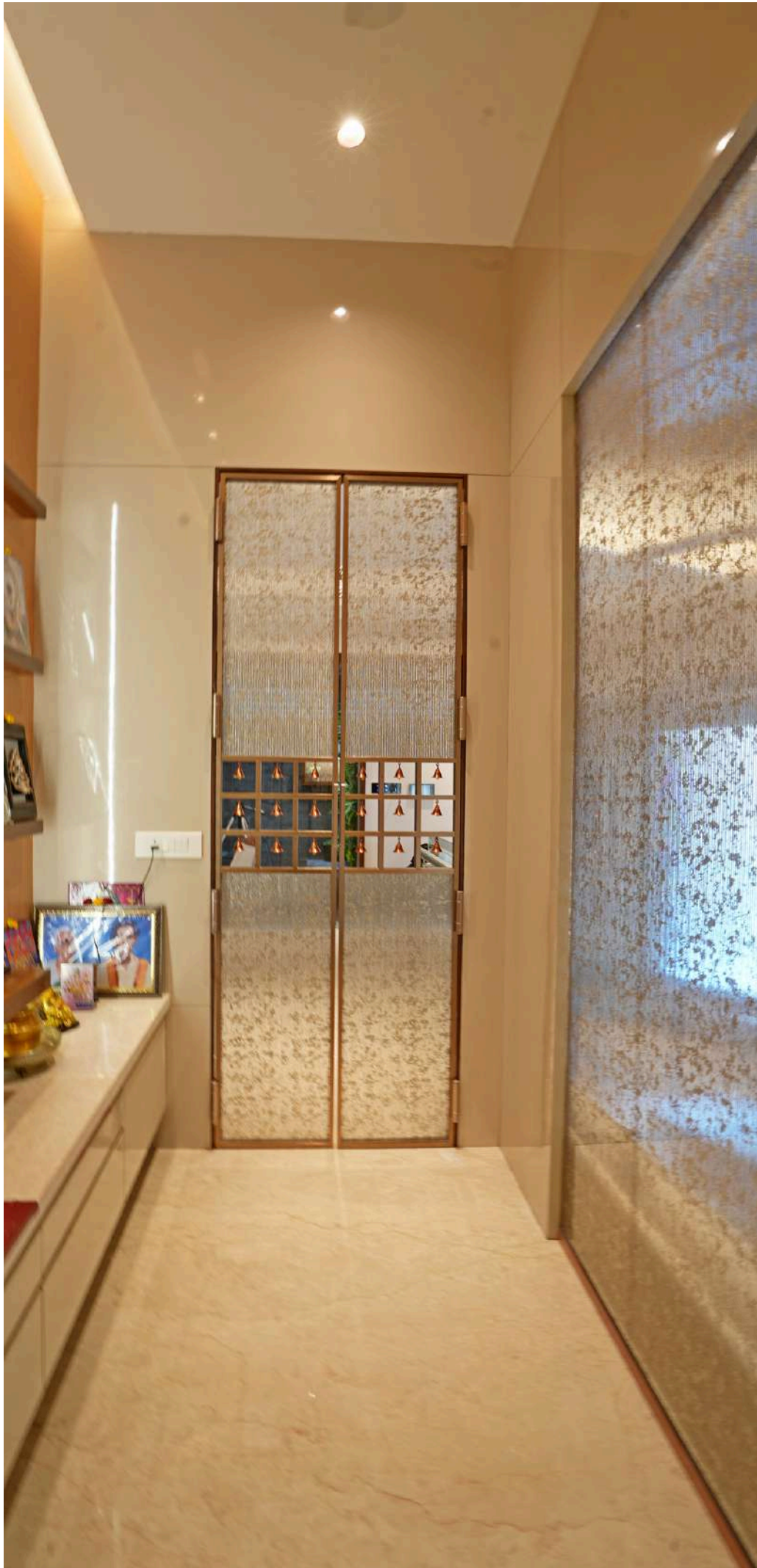
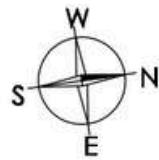
**Guest Bedroom**

A calming bedroom ambiance highlighted by a tufted velvet headboard, floating wooden side tables with potted plants, beige marble flooring, fabric blinds, recessed ceiling lighting, and a ceiling fan enhancing comfort and serenity.





FIRST FLOOR PLAN



First Floor

LEGEND

- VERANDAH
- LIVING AREA
- DINING
- COURTYARD
- POOJA ROOM
- C. TOILET
- CROCKRY UNIT
- LIFT
- KITCHEN
- STORE CUM UTILITY
- PARENT'S ROOM
- SITTING WINDOW
- TOILET
- WARDROBE





---

## Elegant Living Area

Living room design showcasing a cream sectional sofa, polished marble flooring, wooden wall paneling, sleek TV unit, teal accent chairs, recessed ceiling lighting, and sheer curtains softly diffusing natural light for a warm, inviting atmosphere.





## Dining Area

Spacious dining area featuring a glass-topped table surrounded by cushioned wooden chairs, marble flooring, glass-front cabinets, and a wooden ceiling panel with recessed lighting, complemented by a ceiling fan and glass staircase for an airy, welcoming atmosphere.



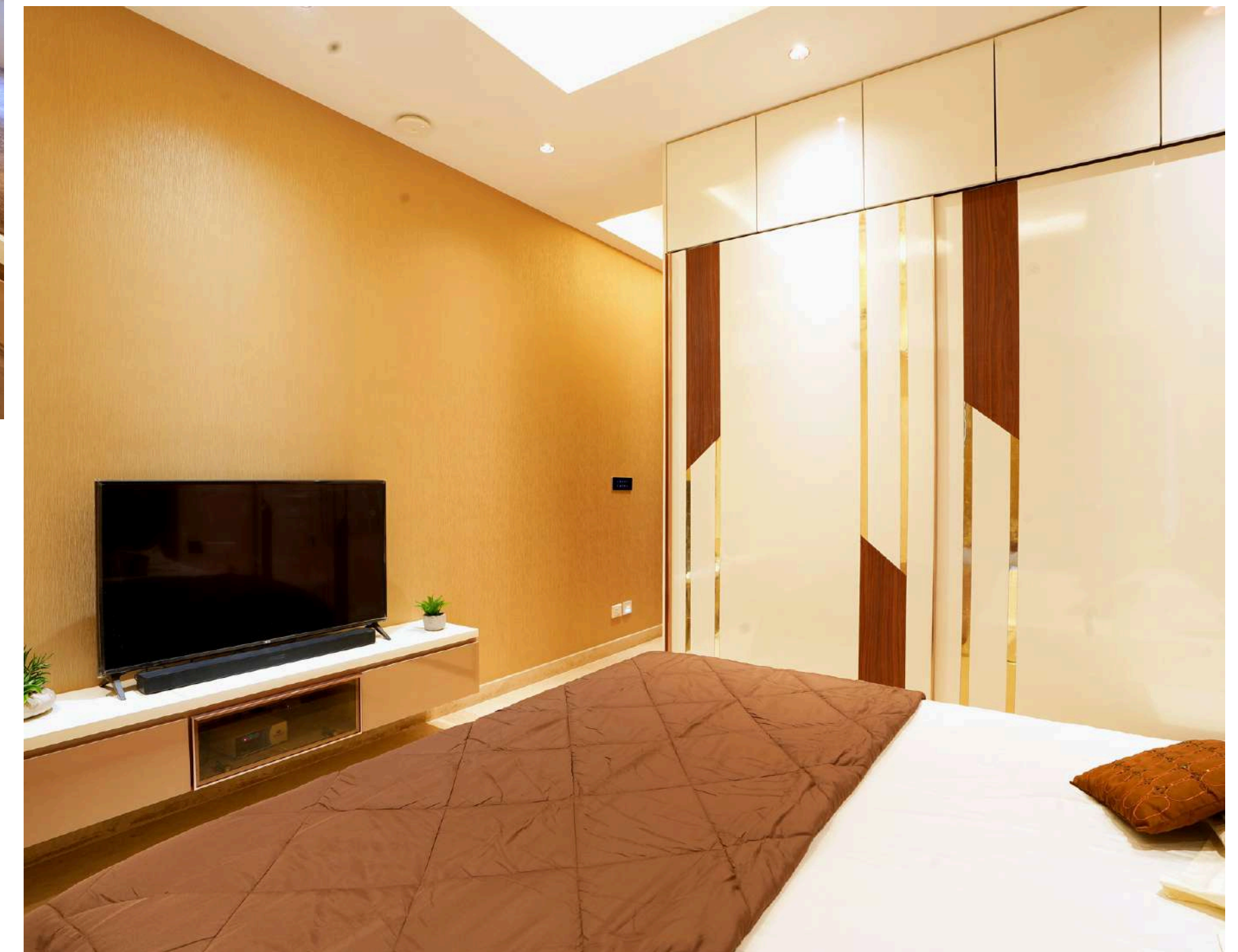


---

## CourtYard

Tranquil courtyard passage showcasing textured charcoal wall cladding, vibrant yellow accent wall with mounted planters, terracotta flooring, artificial grass runner, and a white pergola roof that filters natural light to create a refreshing atmosphere.





---

### Parent's BedRoom

A cozy bedroom featuring a tufted upholstered headboard, glossy wooden wall panel, beige textured walls, sleek built-in wardrobe with sliding glass doors, cushioned window seating, marble flooring, and recessed lighting that enhances its warm, inviting ambiance.



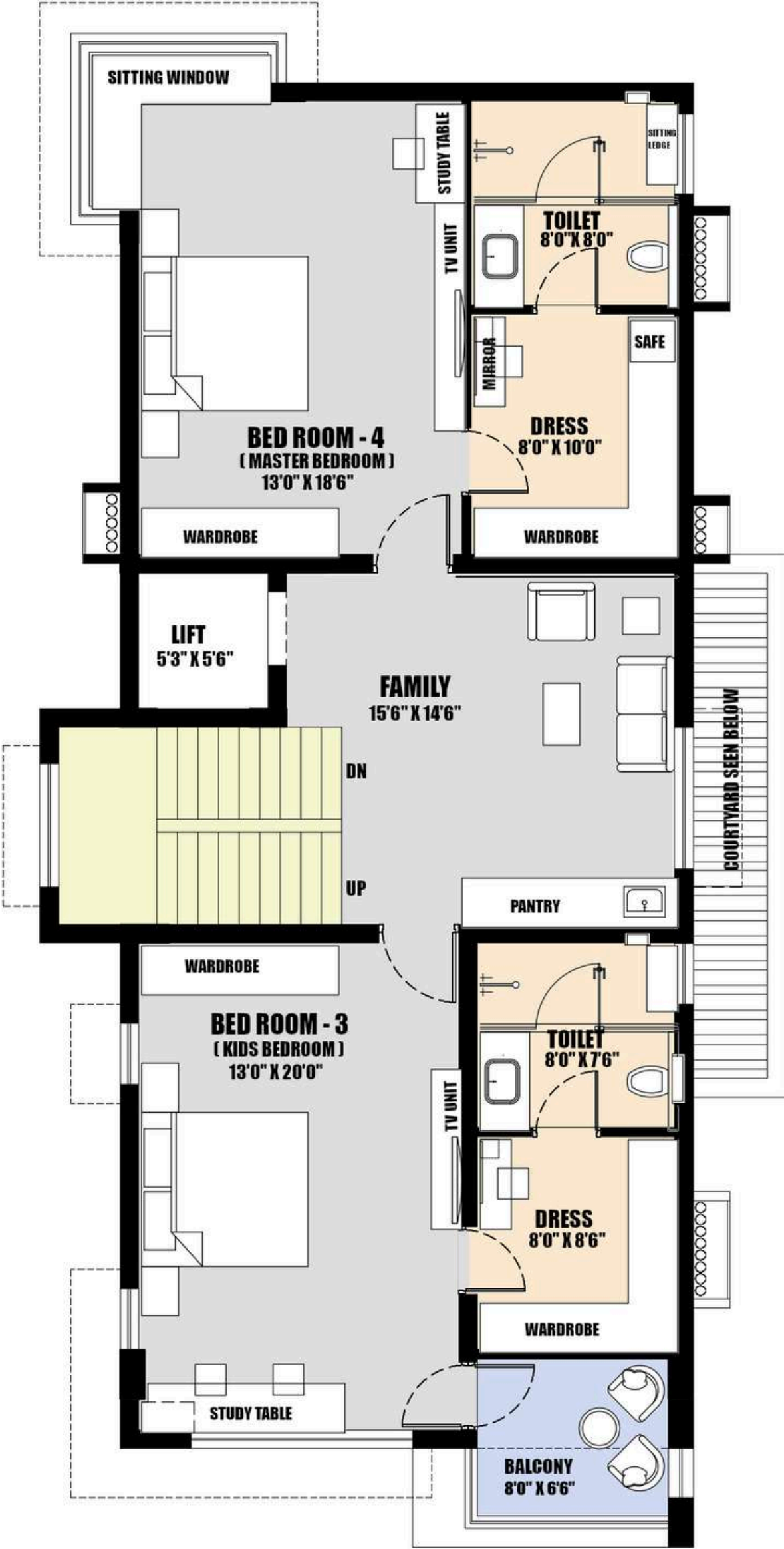


---

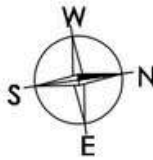
## Kitchen

This kitchen features glossy beige cabinets, white quartz countertops, glass-front overhead units with warm lighting, matte black sink and hob, bronze faucet, large window with sleek black grills, and polished marble flooring enhancing the airy ambiance.





SECOND FLOOR PLAN



Second Floor

LEGEND

- |                    |                      |                  |
|--------------------|----------------------|------------------|
| • FAMILY           | • TOILET             | • SITTING WINDOW |
| • LIFT             | • DRESSING ROOM      | • TOILET         |
| • KIDS BEDROOM - 3 | • BALCONY            | • DRESSING ROOM  |
| • STUDY TABLE      | • MASTER BEDROOM - 4 | • PANTRY         |



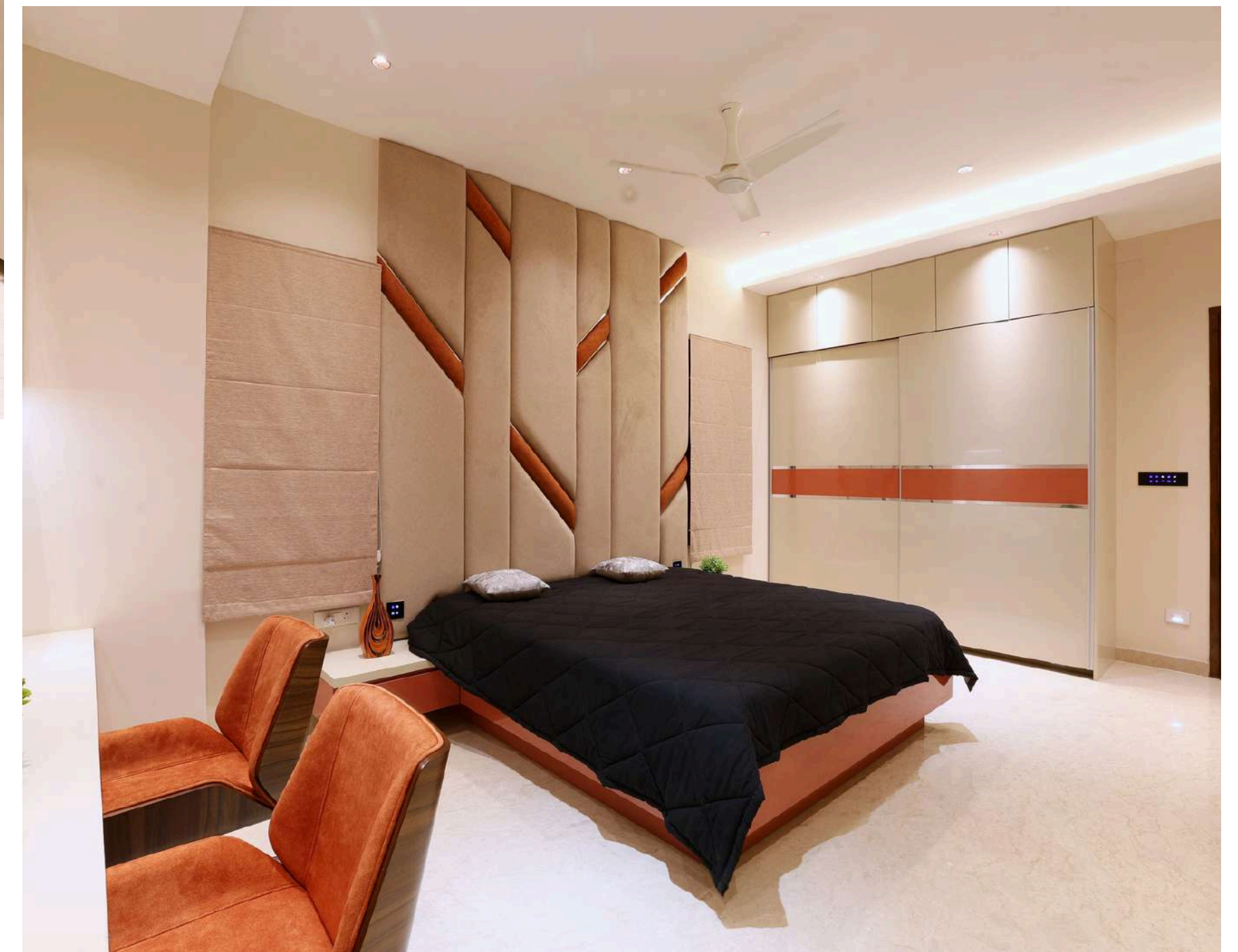


---

## Family Area

This room features plush rust-colored velvet sofas with a matching ottoman, sleek beige cabinetry with black granite countertop, soft recessed lighting, and neutral walls creating a warm, balanced, and inviting living space.





---

## Kids Bedroom

This bedroom features a padded geometric headboard with metallic accents, beige walls, glossy built-in wardrobe with dual-tone panels, floating nightstands, marble flooring, and recessed ceiling lighting that enhances the room's warm and restful ambiance.





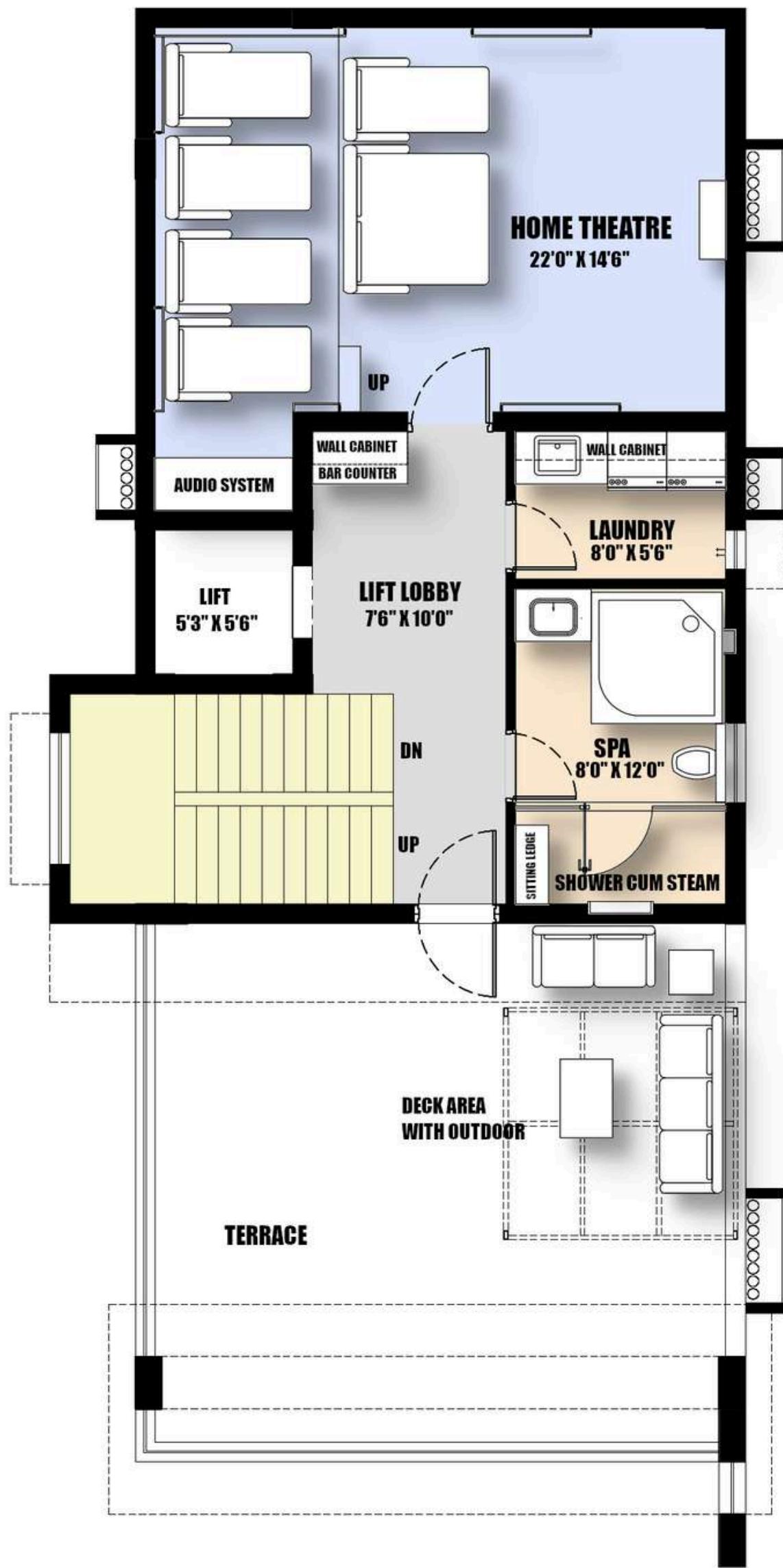
---

## Master Bedroom

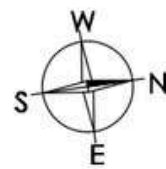
This bedroom highlights a plush grey upholstered headboard, glossy wooden wall panel, sleek dual-tone wardrobe with reflective finishes, beige marble flooring, recessed ceiling lights, and minimal furnishings that create a calm, refined, and spacious atmosphere.







THIRD FLOOR PLAN



Third Floor

LEGEND

- HOME THEATRE
- LAUNDRYA
- DECK AREA
- LIFT
- SPA
- TERRACE
- LIFT LOBBY
- SHOWER CUM STEAM





---

## Home Theater

Featuring plush olive recliners, dark wooden flooring, textured acoustic walls, and angled LED strip lighting, this home theater offers a luxurious cinematic experience enhanced by a ceiling-mounted projector and ambient recessed ceiling design.





---

## Terrace

This spacious terrace showcases a wooden pergola with intricate laser-cut panels, earthy-toned tiled flooring, glass railing with sleek metal framing, and minimal seating, offering a tranquil open-air retreat with balanced light and shade.



