

ANSARITM
ARCHITECTS

LUXURY HOUSE
IN ECR





Project Location : ECR Uthandi
Architectural Firm : Ansari Architects
Principal Architect : Dameem Ansari,
Jaffer Arshad Ansari

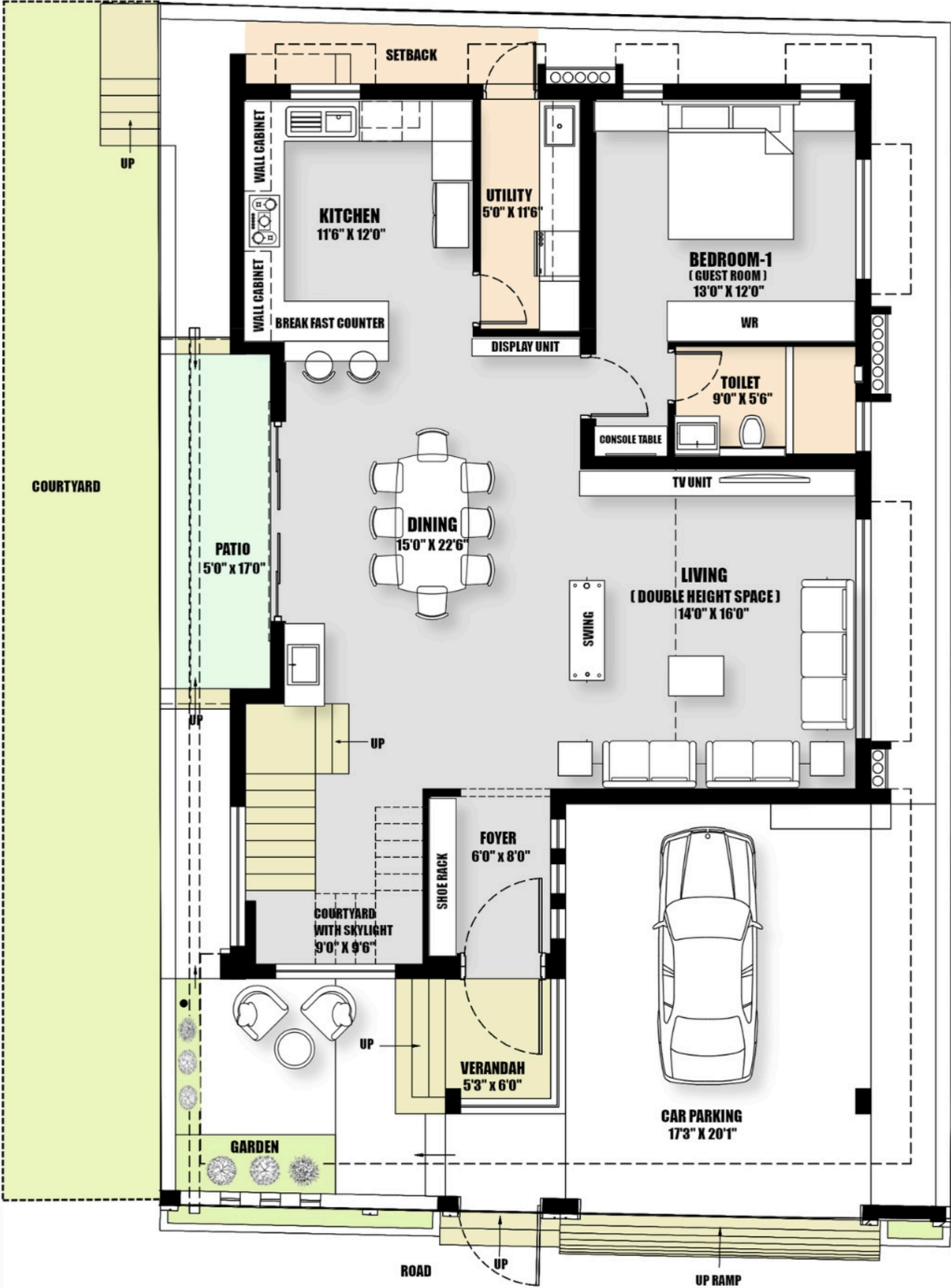
Plot Area : 2,400 Sq.Ft
No. Of Car Park : 1
No. Of Rooms : 4
Facing : North
Built - up Area : 3,600 Sq.Ft

Natural stone cladding and polished granite flooring create a durable, timeless base, while wooden ceiling paneling adds warmth. A well-designed verandah enhances the home with a seamless indoor–outdoor connection



Courtyard

The garden features a rectangular open lawn, providing a versatile space for recreation, gatherings, or outdoor relaxation.



PLOT AREA : 2400 SQ. FT
BUILT UP AREA : 3600 SQ. FT
(Including Carparking)
GROUND FLOOR PLAN

- ### Ground Floor
- LEGEND**
- CAR PARKING
 - VERANDAH
 - GARDEN
 - LIVING ROOM
 - DINING AREA
 - SETBACK
 - FOYER
 - KITCHEN
 - UTILITY AREA
 - PATIO
 - COURTYARD
 - GUEST BEDROOM - 1
 - TOILET



Living Area

The double-height volume enhances spatial openness and daylight penetration through clerestory windows. A clean, open layout prioritizes functional zoning, while carefully planned furniture placement maintains visual balance, efficient circulation, and a defined yet intimate seating area.



Dining Area

Cream marble floors reflect light and unify the space. Beige and blush upholstery adds warmth, while wooden wall panels bring natural texture. The open living-dining layout encourages flow and social interaction.



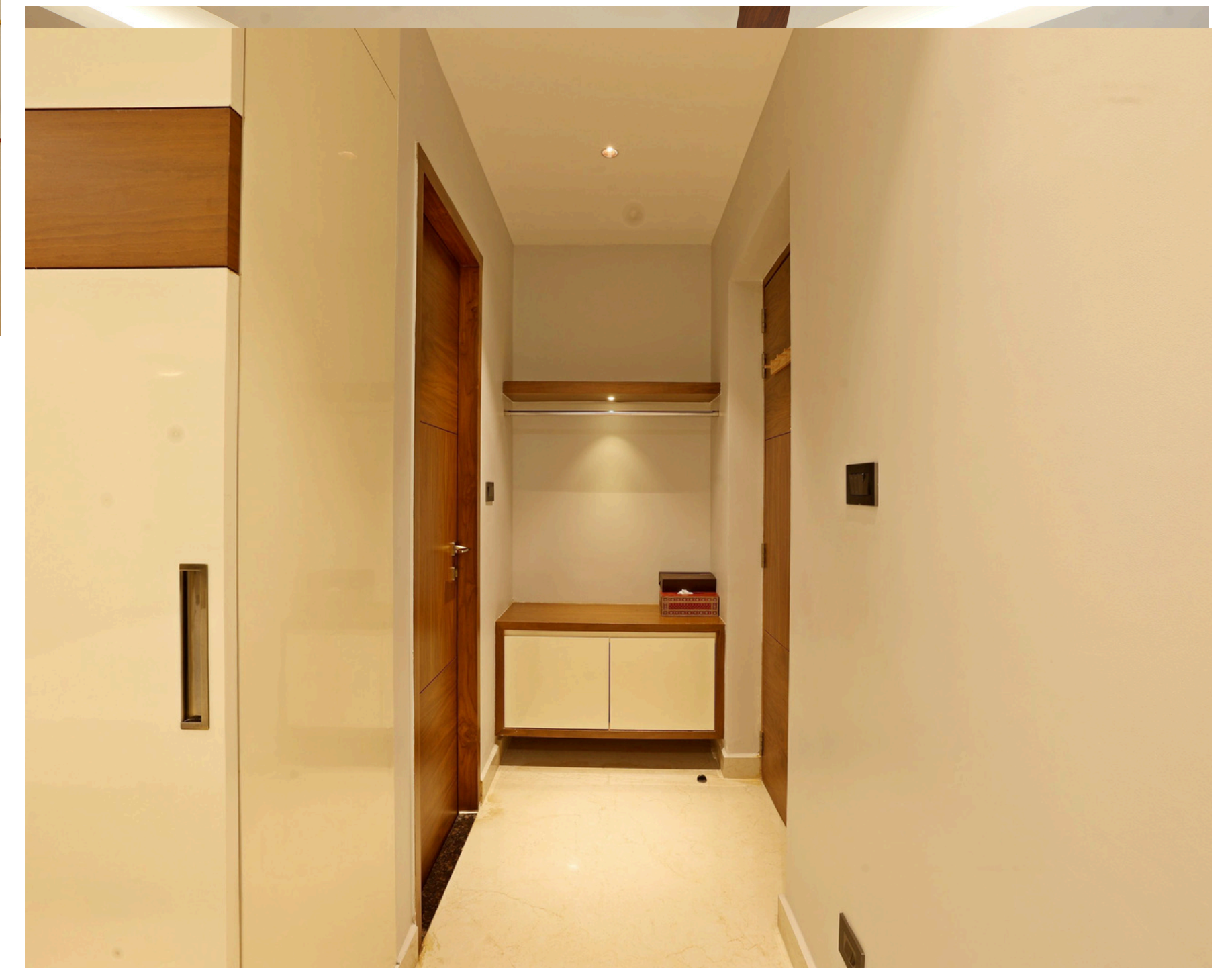
Kitchen

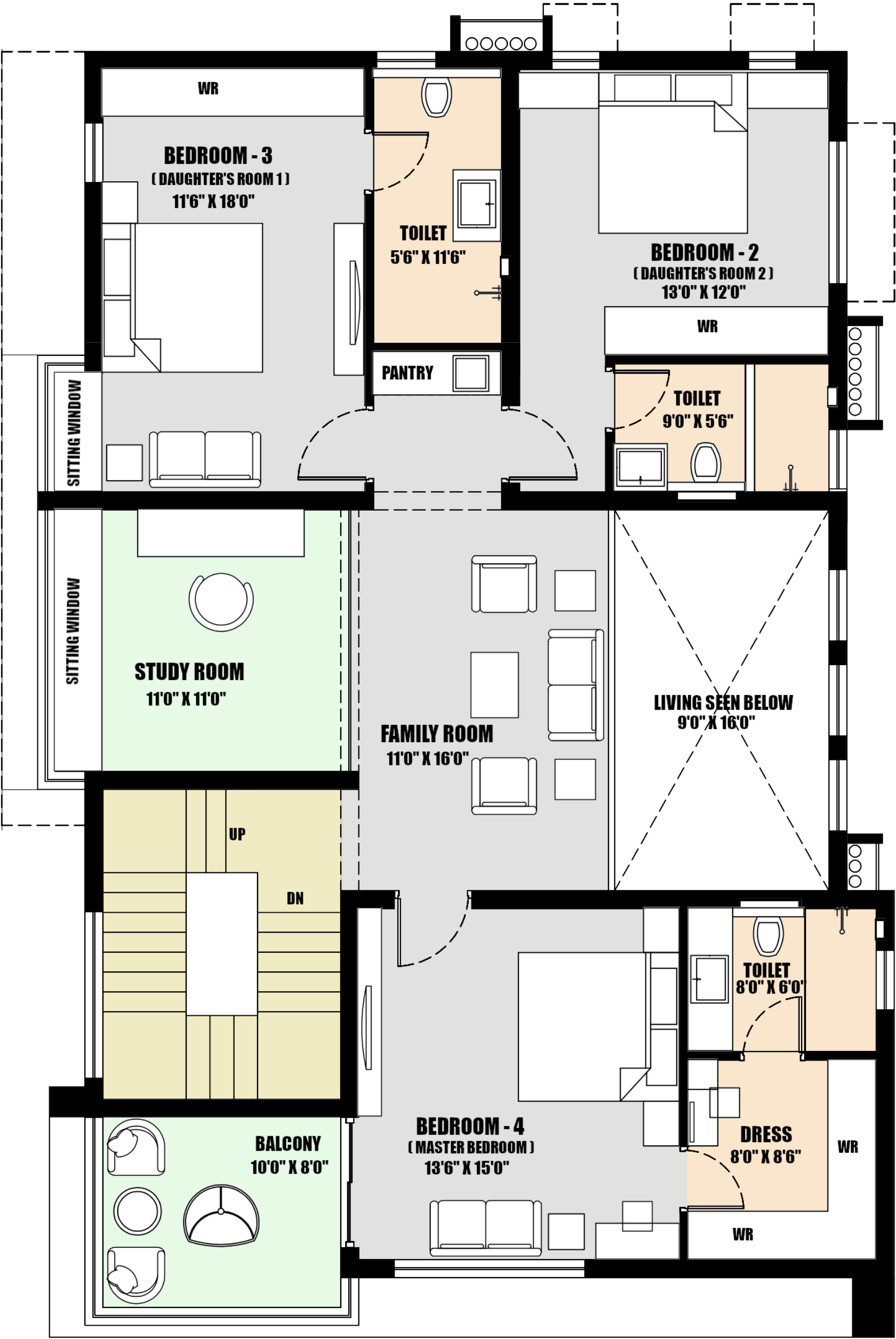
The U-shaped kitchen maximizes workflow and storage with uncluttered counters. Glossy beige and taupe cabinets reflect light, white quartz countertops add contrast and durability, and beige marble floors create a warm, cohesive look.



Guest Bedroom

The guest bedroom features a bed centered between vertical windows, with floating side tables for a light, uncluttered feel. Neutral tones, an upholstered headboard, and wooden accents create calm and warmth. Layered lighting adds ambiance, focus, and depth.





FIRST FLOOR PLAN



First Floor

LEGEND

- FAMILY AREA
- STUDY ROOM
- BEDROOM - 2
- TOILET
- SITTING WINDOW
- PANTRY
- BEDROOM - 3
- TOILET
- BEDROOM - 4
- BALCONY
- TOILET
- DRESSING ROOM
- SITTING WINDOW



BedRoom - 2

The bedroom features an open layout with a centered bed and a functional study corner. Marble floors, beige walls, and blue-white accents create a calm, modern feel. Recessed and natural lighting brighten the space, while black-framed windows, a Roman blind, and minimalist furniture keep it sleek and uncluttered.





Bedroom - 3

The room centers on a bed flanked by windows, with a cozy window seat and mirrored panel enhancing space and light. Warm wood, blue upholstery, and gold accents create a balanced, sophisticated palette. Layered lighting, a textured headboard, and sleek furniture add function, depth, and modern elegance.

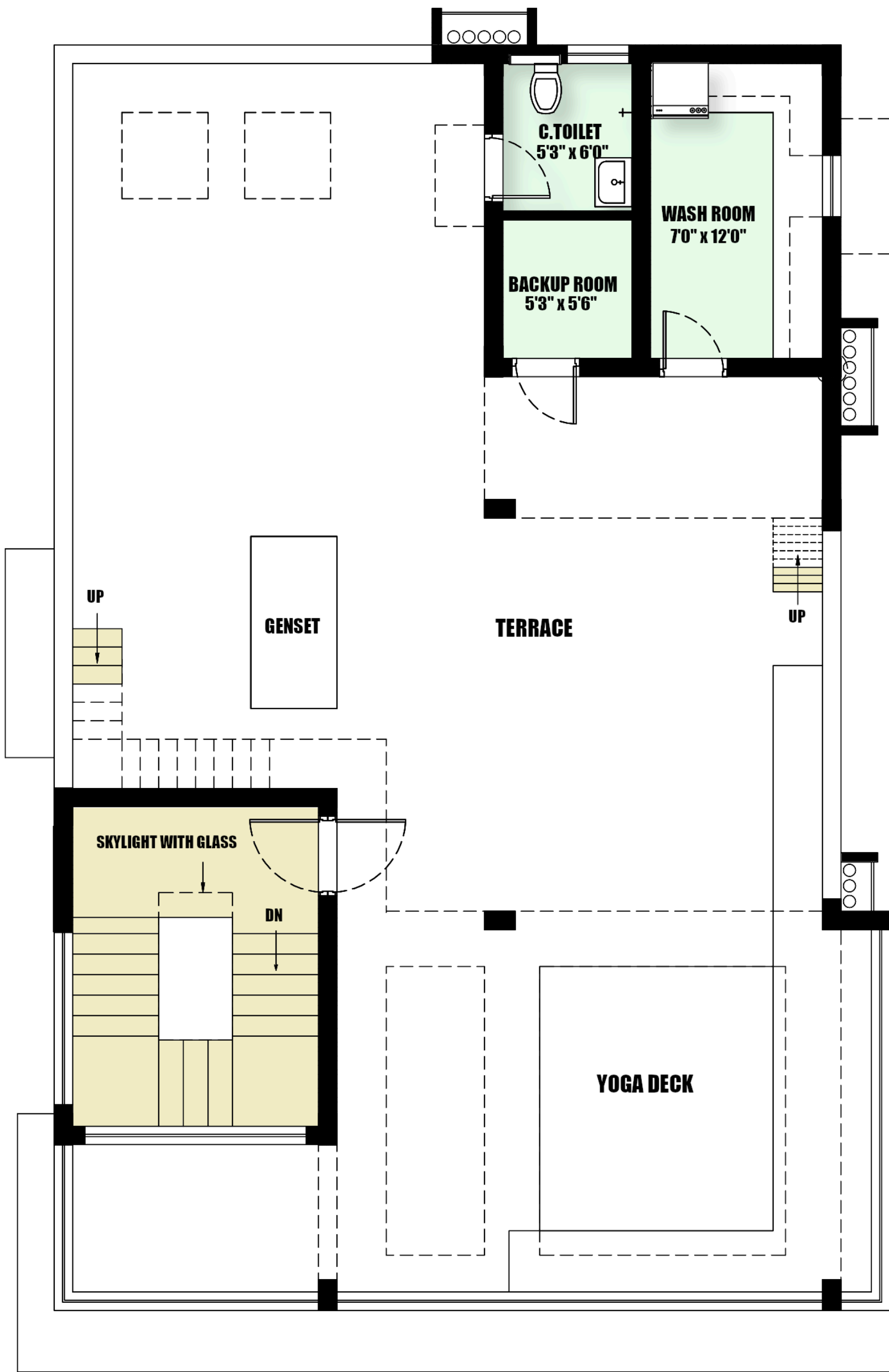




BedRoom - 4

The balcony flows seamlessly from the living space, featuring sliding glass doors, warm wood flooring, travertine walls, and clear railings for open views. The bedroom follows a clean rectilinear layout with a central bed and window-side study nook, maximizing light and openness. Blue upholstery, wooden accents, marble flooring, and layered lighting create a bright, functional, and elegant interior.





SECOND FLOOR PLAN



Second Floor

LEGEND

- TERRACE
- YOGA DECK
- C. TOILET
- BACKUP ROOM
- WASH ROOM





Open Terrace

The terrace is a versatile open space for gathering and relaxation, with shaded and open areas for all-day use. Glass railings and parapet walls ensure safety while preserving views, while terracotta tiles, beige walls, and a laser-cut metal pergola add comfort and visual interest.

