

**ANSARI<sup>TM</sup>**  
ARCHITECTS  
COMPACT LUXURY HOUSE



VASANTHA  
ILLAM

80/2-B





**Project Location** : Arumbakkam  
**Architectural Firm** : Ansari Architects  
**Principal Architect** : Dameem Ansari,  
Jaffer Arshad Ansari

---

Plot Area : 2,200 Sq.Ft  
No. Of Car Park : 1  
No. Of Rooms : 4  
Facing : North  
Built - up Area : 6,000 Sq.Ft

The compact luxury house and Chennai traditional architecture have been conveyed through Ansari Architect.



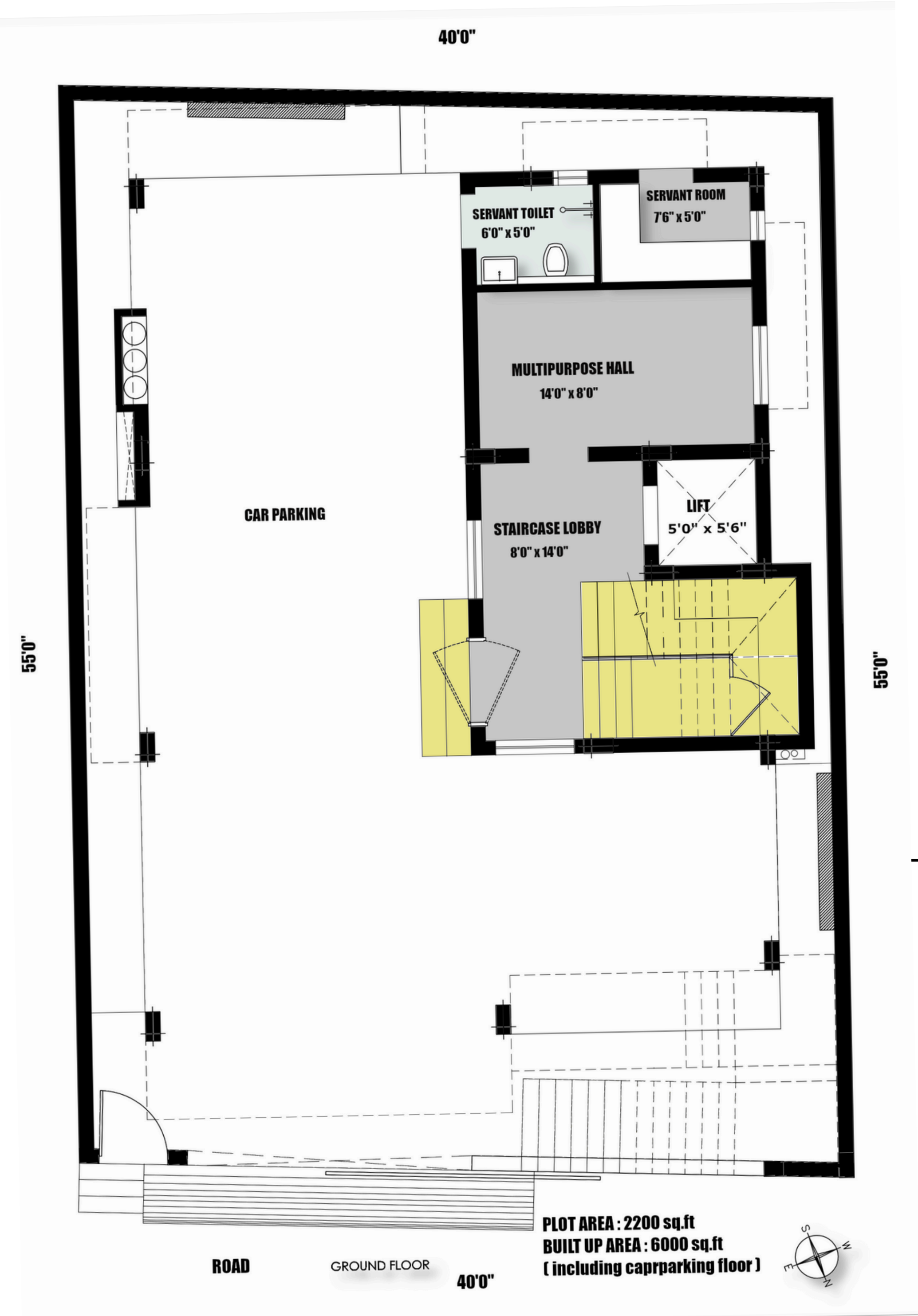


---

## Introduction

A well-crafted opening atmosphere forms the foundation of any functional and visually appealing space, and by integrating openness, efficient flow, and sustainable features like the greenstone effect, designers can enhance aesthetics, comfort, and energy efficiency, creating a versatile environment for collaboration and events.





## Ground Floor

### LEGEND

- Parking Area
- Staircase Lobby
- Multipurpose
- Lift Area
- Servant Toilet
- Servant Toilet

## Entry Design

The space combines openness with a refreshing atmosphere, featuring greenstone accents and a dependable generator. Carefully designed elements enhance comfort, functionality, and aesthetics, creating an inviting and harmonious environment.

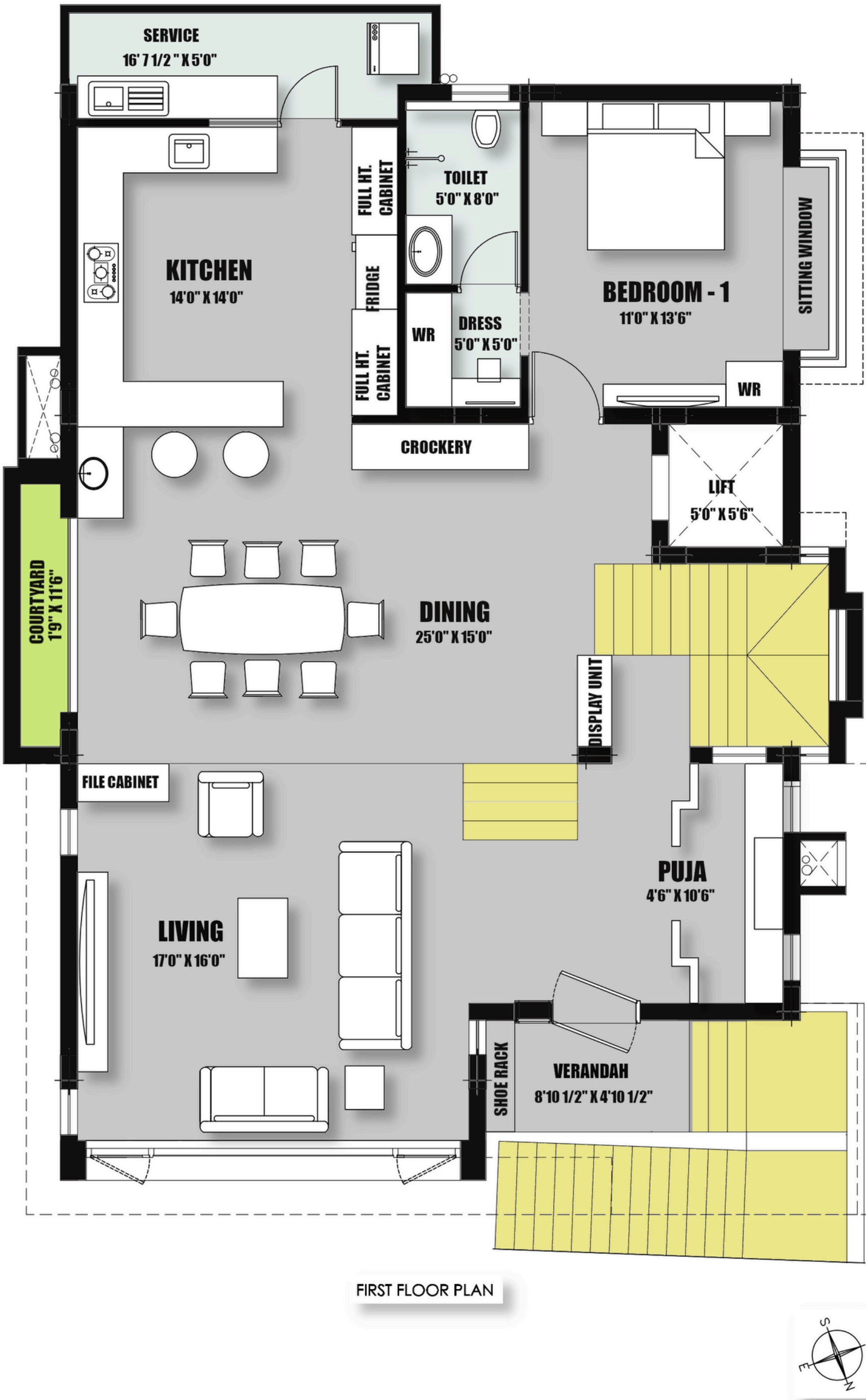




## Dining Area & Side Courtyard

This luxurious dining space features Italian marble flooring, elegant finishes, and aluminum details with frosted glass. A six-seater table faces a courtyard with natural planters, while added highlights include a marble hand wash with golden fittings, a quartz breakfast counter, smart storage, and floor-to-ceiling glass panels that brighten the room, all enhanced by centralized air conditioning.





Contemporary Design

The living, dining, kitchen, and puja room feature 16 ft laminated glass, marble flooring, handleless acrylic cabinets, custom displays, stainless steel appliances, and a glass-stainless staircase, seamlessly blending contemporary elegance with ethnic sophistication.

First Floor Plan

LEGEND

- Verandah
- Puja Area
- Living Area
- Dining Area
- CourtYard
- Bed Room - 1
- Dressing Room
- Toilet
- Kitchen
- Service







---

## Courtyard

The second-floor courtyard, about 5 × 5 ft, is a bright space with oxygen-giving plants, an ethnic yellow sculpture wall with accent lighting, wooden plank flooring, and artistic cutouts. It blends natural light and greenery to create a peaceful, refreshing corner in the home.





## Dark Theme Bedroom

This second-floor bedroom features a modern dark theme with frosty white laminates, marble flooring with brown inlay, large glass windows, and a private balcony. Fluted panels and custom aluminum cutouts add a refined, stylish touch.





### Master Bedroom

The master bedroom features a teal and light gray palette, an 8 ft sunlit sitting window, U-shaped wardrobes, and a spacious dressing room with full-height mirrors. The ensuite includes Italian marble, rustic stone-finish flooring, a rain shower with body jets and thermostat controls, and large glass panels, creating a serene and luxurious retreat.





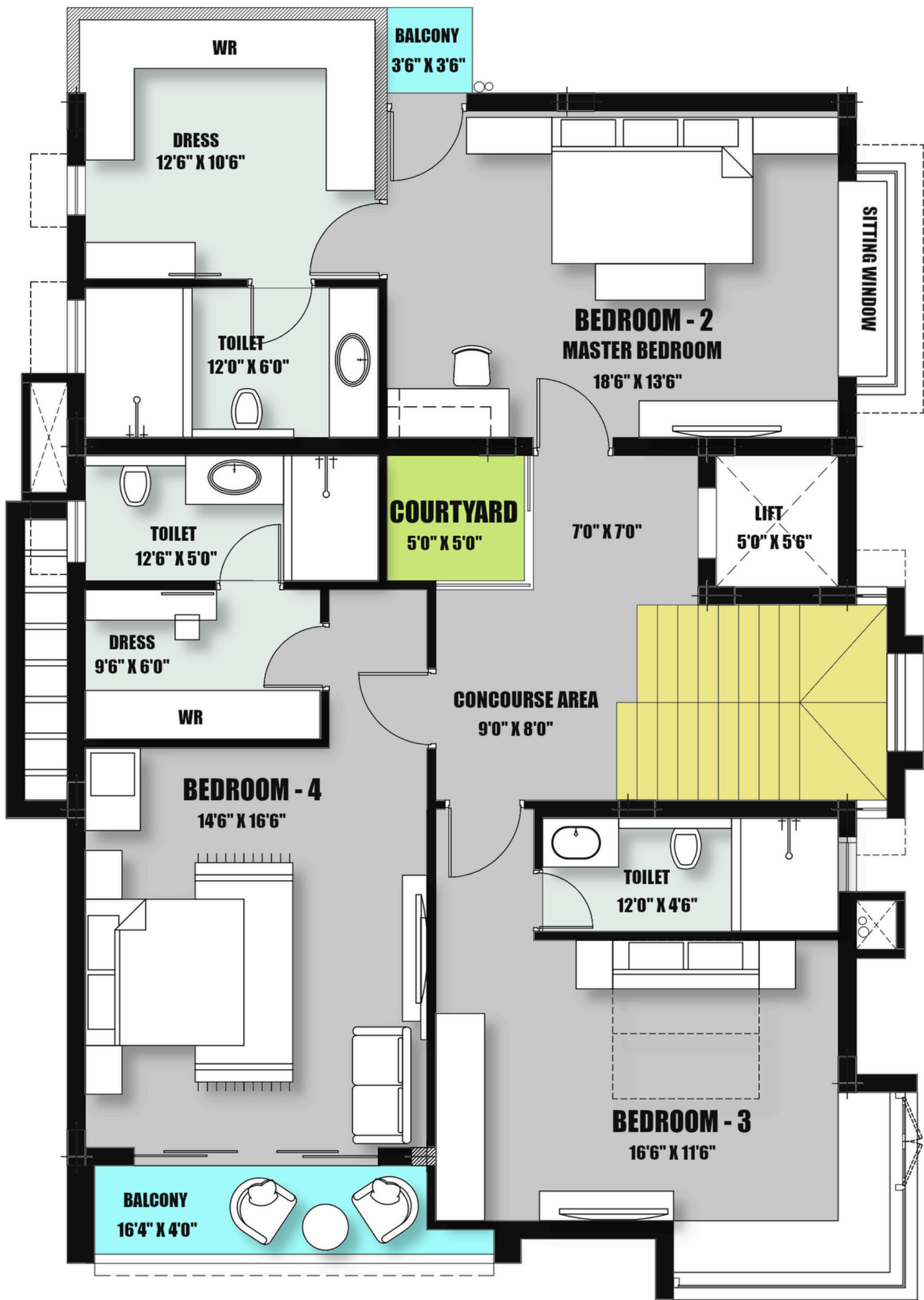


## Kids Bedroom

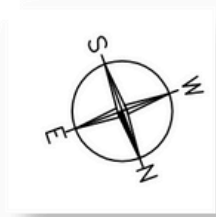
This warm and sophisticated bedroom features American walnut finishes, an L-shaped sitting window with expansive glass, and a concealed bed for seamless use. Frosty white laminates, marble flooring with brown inlay, and a luxurious bathroom with a marble vanity and custom aluminum cutout panel complete the space.







SECOND FLOOR PLAN



Second Floor Plan

LEGEND

- Concourse Area
- CourtYard
- Lift Area
- Bed Room - 2
- Dressing Room
- Toilet Area
- Bed Room - 3
- Toilet Area
- Bed Room - 4
- Balcony Area
- Dressing Room
- Toilet

conclusion

Designed for luxury and functionality, the bedrooms feature elegant finishes, custom wardrobes, and expansive windows. Every room provides comfort, style, and privacy, creating a refined, serene, and welcoming environment for the entire family.





---

### Terrace Design with Natural Plants

This thoughtfully designed terrace features lush plants and elegant planters, creating a serene outdoor retreat. Its functional, modern layout blends greenery with clean design, offering a refreshing space for relaxation or gatherings.





### Gazebo Design

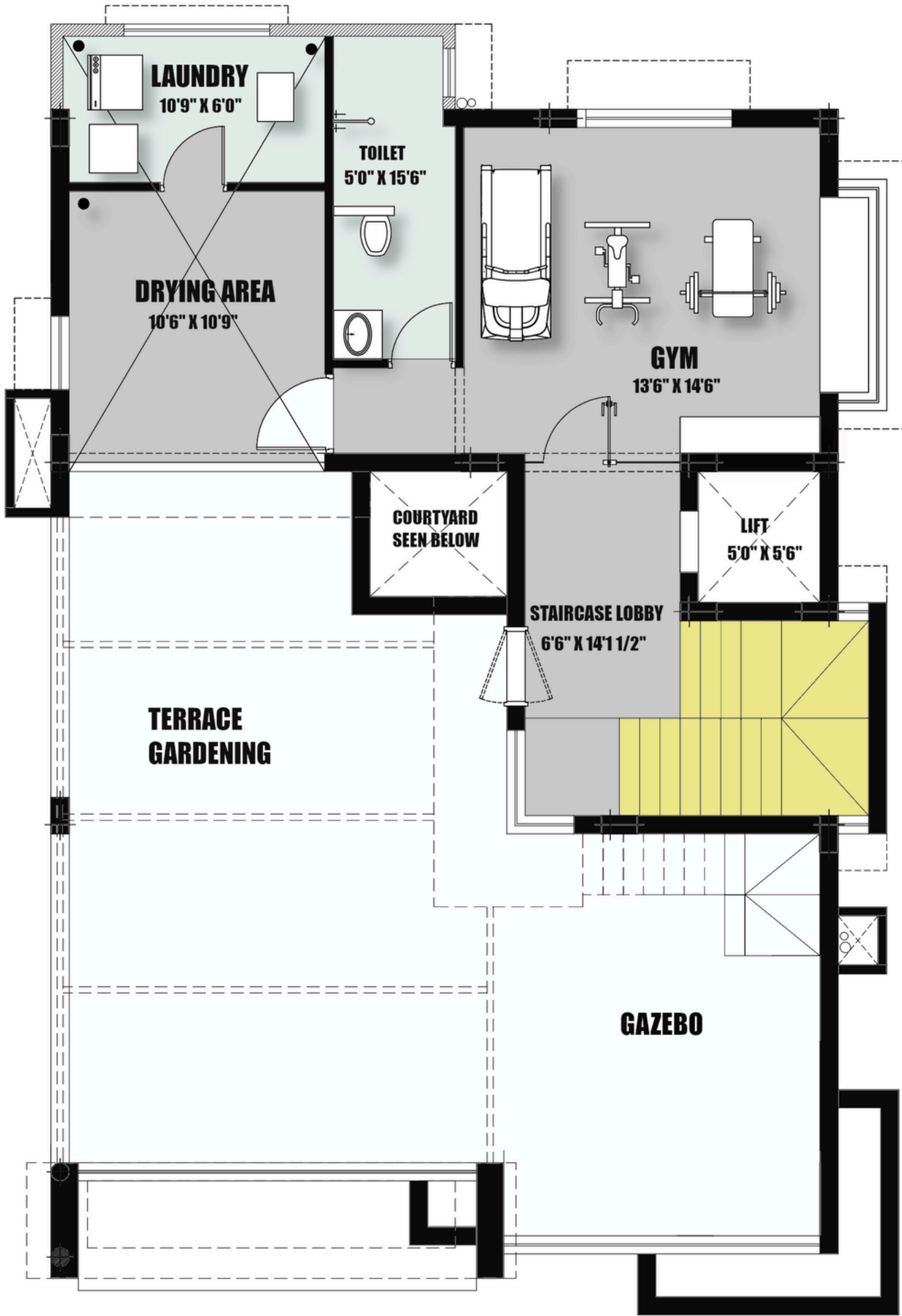
A stylish gazebo crafted with precision-cut WPC panels for durability and a sleek modern look, enhanced with subtle grant boxes and refined detailing, serving as an inviting outdoor centerpiece that balances elegance and functionality, creating a luxurious retreat for leisure and socializing in any garden or terrace.

### Gym & Spa Jacuzzi Area

A compact, thoughtfully designed gym featuring state-of-the-art equipment, full-height mirrors, an integrated audio system, a sitting window, and sleek glass detailing (15½ ft × 5½ ft), with an adjoining spa that includes a large jacuzzi, heater, marble countertops, concealed vanity, elegant gray tiles with blue accents, plus a laundry room, covered drying area, and barbecue space.







THIRD FLOOR PLAN



Third Floor

LEGEND

- Staircase Lobby
- Toilet Area
- CourtYard
- Lift Area
- Drying area
- Terrace Gardening
- Gym
- Laundry
- Gazebo



