

**ANSARI™**  
ARCHITECTS

**COLOR HARMONY  
HOUSE**







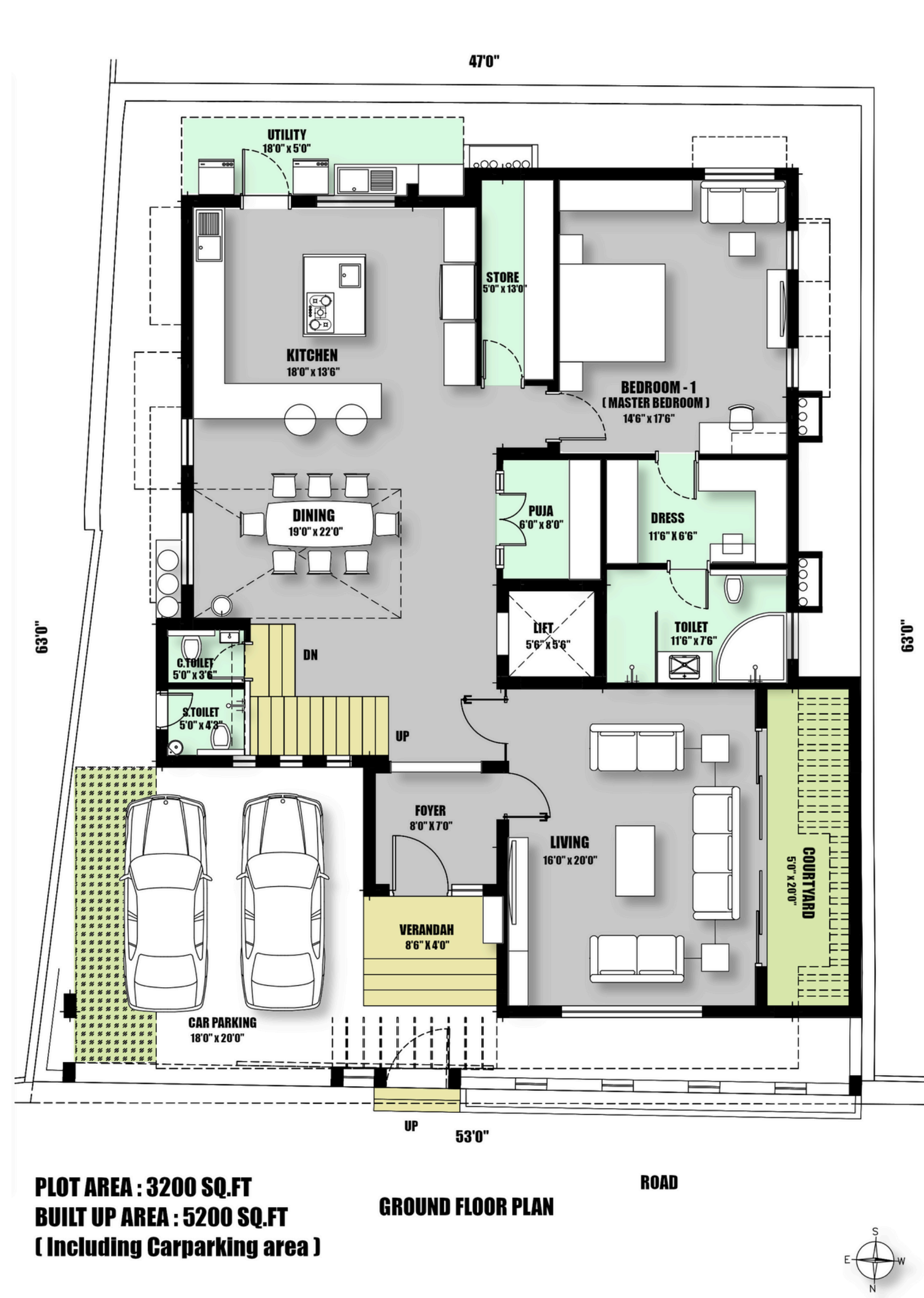
A welcoming entrance with a carved wooden door, marble steps, stone walls, and greenery creating timeless appeal.

**Project Location** : Sholinganallur, OMR  
**Architectural Firm** : Ansari Architects  
**Principal Architect** : Dameem Ansari,  
Jaffer Arshad Ansari

---

Plot Area : 3,200 Sq.Ft  
No. Of Car Park : 1  
No. Of Rooms : 4  
Facing : West  
Built - up Area : 5,200 Sq.Ft





## Ground Floor

### LEGEND

- CAR PARKING
- VERANDAH
- FOYER
- LIVING ROOM
- COURT YARD
- DINING AREA
- KITCHEN
- STORE ROOM
- C. TOILET
- S. TOILET
- LIFT
- UTILITY AREA
- PUJA ROOM
- MASTER BEDROOM - 1
- DRESSING ROOM
- TOILET





---

## Living Area

A luxurious living room featuring beige leather sofas, a marble-top coffee table, wooden wall panels, recessed lighting, and decorative ceiling fixtures creating a warm, inviting atmosphere with elegant textures, balanced design, and a serene, welcoming ambiance.





---

## Courtyard

Sunlit indoor corridor featuring textured yellow walls, stone cladding, and wooden panels, with a skylight ceiling illuminating lush green plants set in white pebbles, creating a serene, nature-inspired retreat within the space.





## Elegant Dining

Warm-toned dining space showcasing a marble-top table with tan leather chairs, wooden partitions, and recessed lighting, complemented by beige marble flooring, decorative wall accents, and an open kitchen that enhances spatial flow and visual harmony.





---

## Kitchen

Open-concept kitchen featuring glossy beige cabinets, a white quartz countertop, and a central island with a black sink and gas hob, complemented by pendant lighting, wooden accents, and seamless integration with the adjoining dining area.

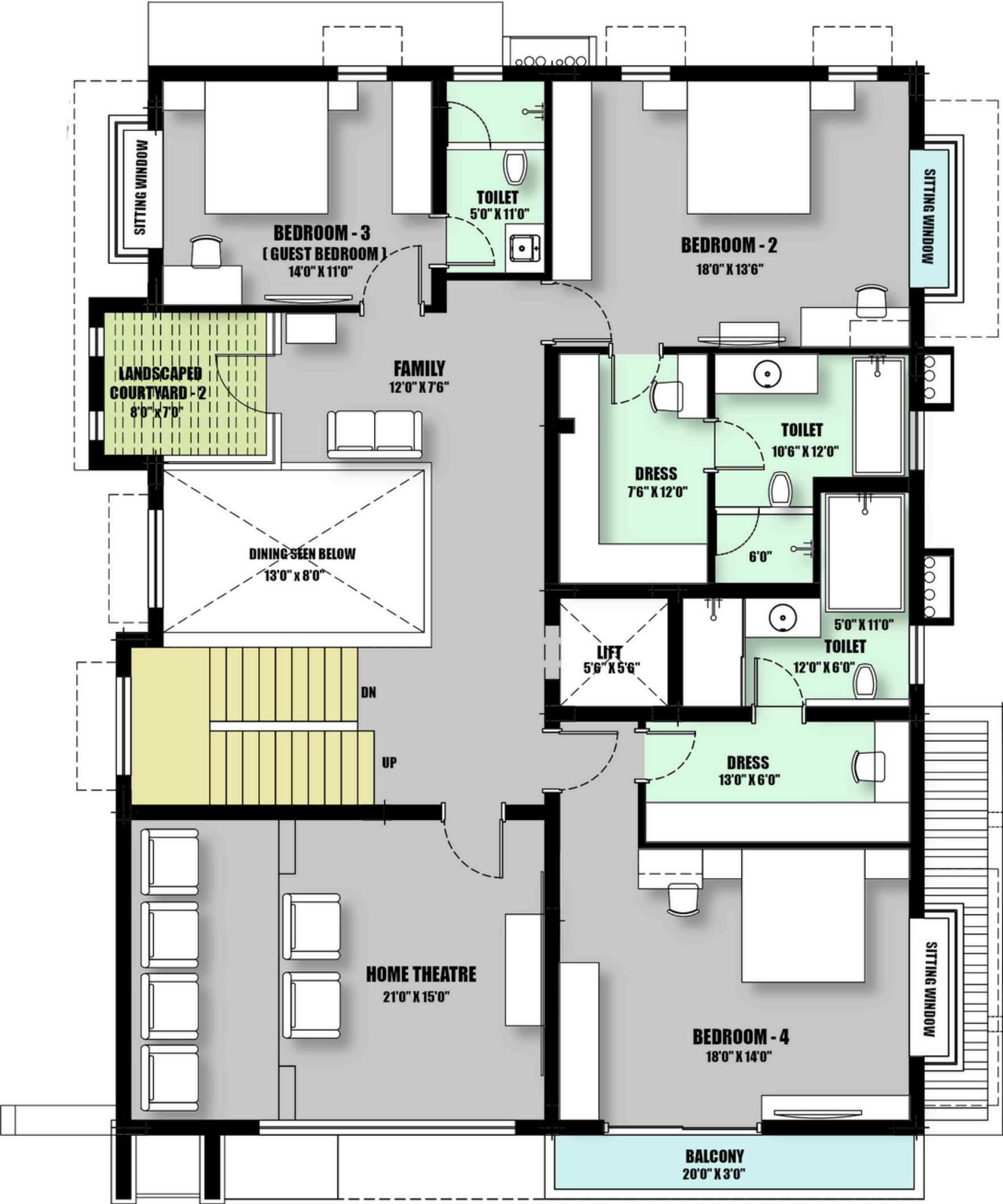




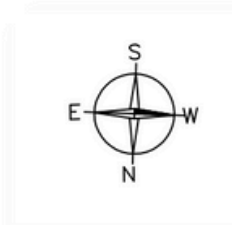
## Master Bedroom

A padded headboard with vertical panel detailing and recessed ceiling lighting is complemented by pendant lamps, sleek white wardrobes with golden accents, and minimal décor that enhances comfort and sophistication.





FIRST FLOOR PLAN



## First Floor

### LEGEND

- FAMILY AREA
- LIFT
- BEDROOM - 2
- DRESSING ROOM
- TOILET
- SITTING WINDOW
- GUEST BEDROOM - 3
- SITTING WINDOW
- LANDSCAPED COURTYARD
- DRESSING ROOM
- TOILET
- BEDROOM - 4
- SITTING WINDOW
- TOILET
- DRESSING ROOM
- BALCONY
- HOME THEATRE





## BedRoom - 2

A cozy, warm-toned bedroom showcases wooden flooring, an upholstered headboard adorned with pendant lighting, and recessed ceiling lights. It features a built-in window seat with storage, along with a stylish study corner that enhances both comfort and functionality.





---

## Guest Bedroom

This bedroom is designed with wooden flooring, a padded leather headboard, and textured beige walls, featuring Roman blinds, a built-in window seat, floating furniture, and a sleek study desk that enhances comfort and functionality.







## BedRoom - 4

A geometric upholstered headboard with golden accents and recessed ceiling lighting, complemented by pendant lamps, a built-in study desk with shelves, and a cozy window seat that enhances comfort and functionality.





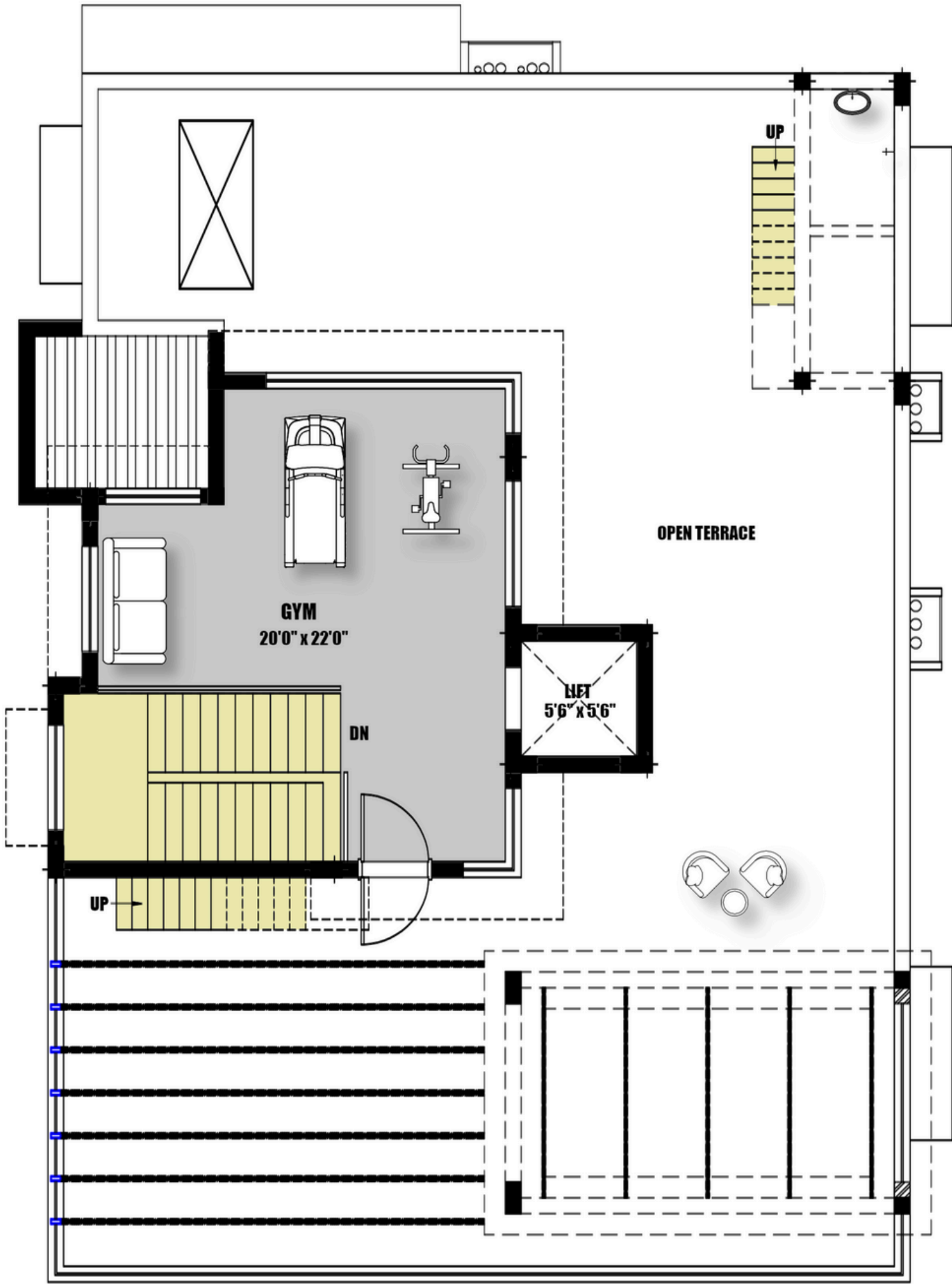


---

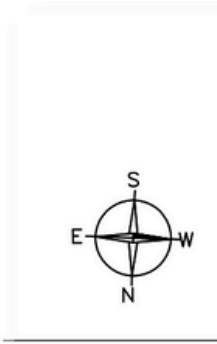
## Home Theatre

Home theater room featuring dark wooden flooring, acoustic wall panels, and layered ceiling design with blue LED lighting, complemented by plush recliners, blackout curtains, and a large projection screen creating an immersive cinematic experience.





SECOND FLOOR PLAN



Second Floor

LEGEND

- GYM
- LIFT
- OPEN TERRACE



Luxury Interior Spaces

Interiors with marble flooring, glass railings, wooden panels, and skylights creating a bright, refined ambiance.





---

## Open Terrace

Terrace featuring patterned metal pergola, tiled flooring, and glass railing, complemented by minimalist furniture and surrounding greenery, creating an open, airy space ideal for relaxation and outdoor gatherings.



