

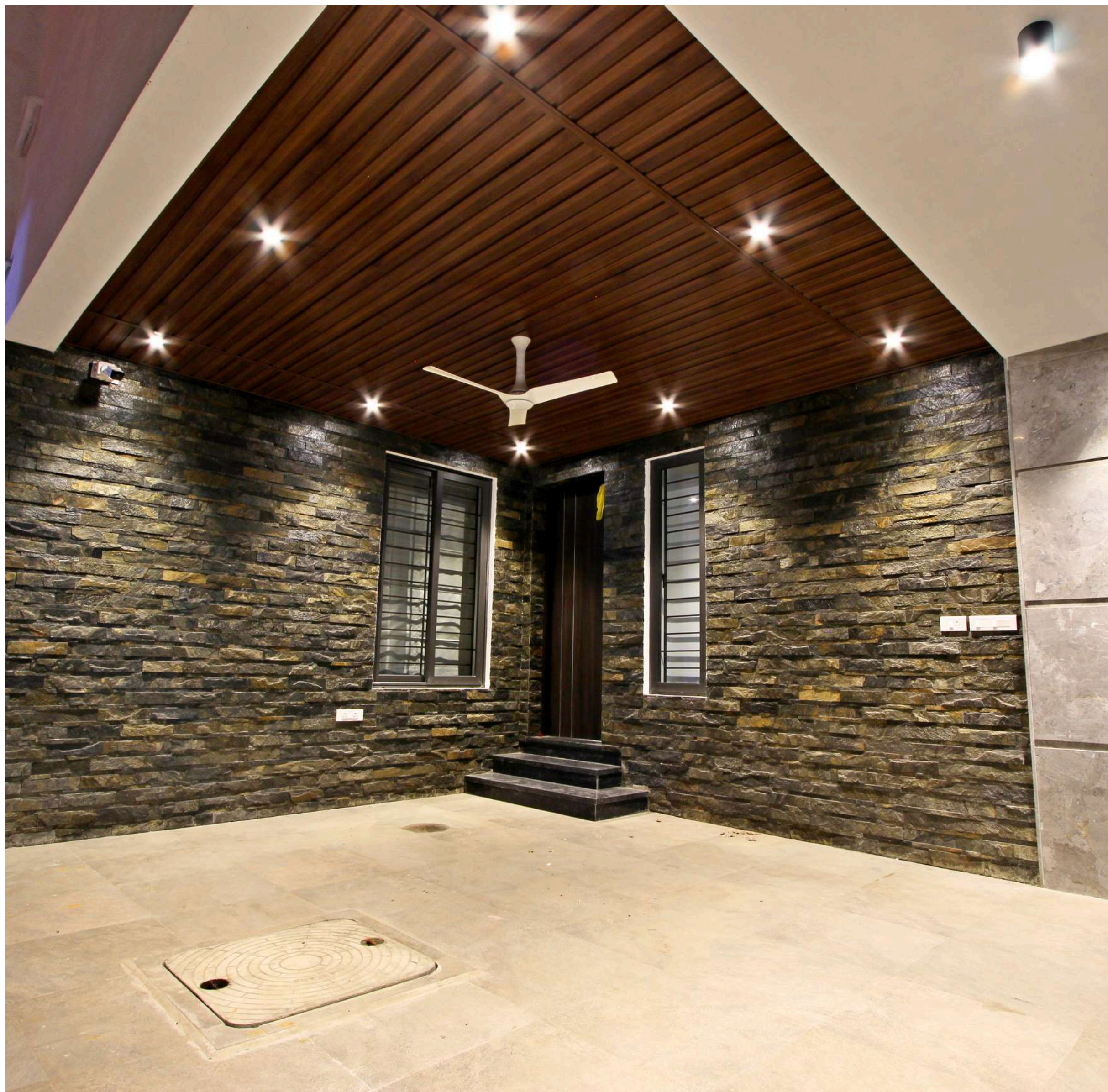
ANSARI<sup>TM</sup>  
ARCHITECTS

# Buddha House





## BUDDHA HOUSE | ANSARI ARCHITECTS



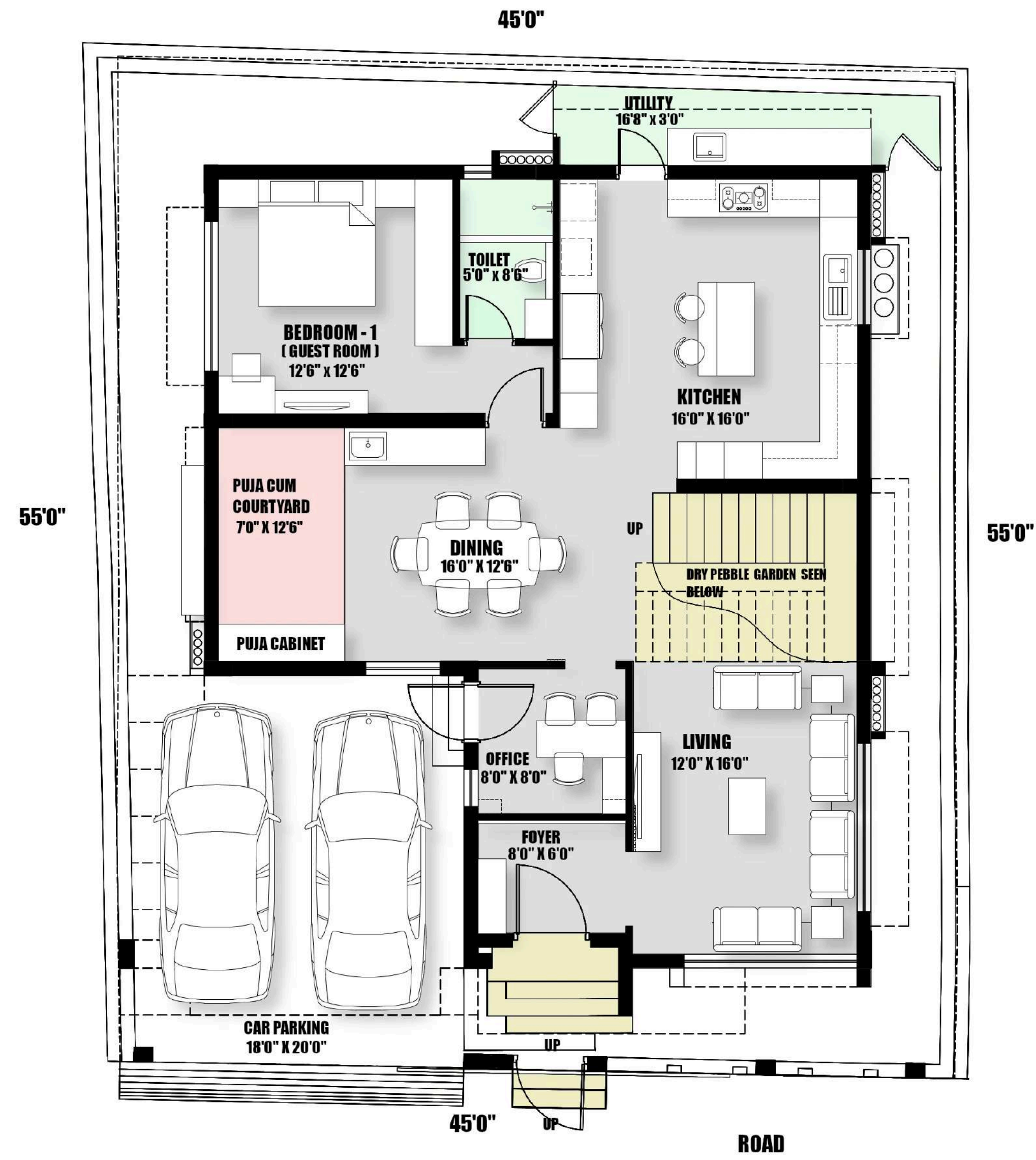
**Project Location** : Perungalathur  
**Architectural Firm** : Ansari Architects  
**Principal Architect** : Dameem Ansari,  
 Jaffer Arshad Ansari

---

Plot Area : 2,400 Sq.Ft  
 No. Of Car Park : 1  
 No. Of Rooms : 3  
 Facing : South  
 Built - up Area : 4,400 Sq.Ft

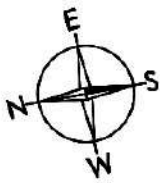
The covered car parking is conceived as a refined forecourt that blends function with design. Stone cladding, warm wooden ceiling panels, and soft lighting create an elegant yet practical arrival space.





GROUND FLOOR PLAN

**PLOT AREA : 2400 SQ.FT**  
**BUILT UP AREA : 4400 SQ.FT**  
**[ Including Carparking area ]**



## Ground Floor

### LEGEND

- CAR PARKING
- FOYER
- LIVING ROOM
- OFFICE ROOM
- DINING AREA
- PUJA CUM COURTYARD
- KITCHEN
- UTILITY
- BEDROOM - 1
- TOILET





---

## Foyer

A refined foyer defined by marble flooring, warm metallic accents, and a wooden entrance door, creating a sophisticated and welcoming introduction to the home.





### Living Area

The open-plan living area flows seamlessly into the dining space, anchored by a floating staircase that connects both levels with elegance and transparency.





---

## Office Room

A contemporary office space with a textured beige feature wall, polished marble floors, wooden shelving, and gold-accented decor, offering a sophisticated and professional environment.





## Elegant Dining

A modern dining area with polished marble floors, a marble-top table, and beige upholstered chairs. Textured stone walls and a vertical garden introduce natural elements, creating a balanced, elegant, and inviting space.





---

## Puja Area

A serene puja niche features a light beige wooden cabinet with jaali panels, a golden Buddha relief, and soft lighting. Marble and wooden flooring, along with textured walls, create a balanced and sacred atmosphere.





---

## Kitchen

A modern kitchen with glossy sage green cabinets, white quartz countertops, and an U-shaped layout. The breakfast counter with mint and cream stools, copper pendants, and marble flooring adds warmth and elegance.





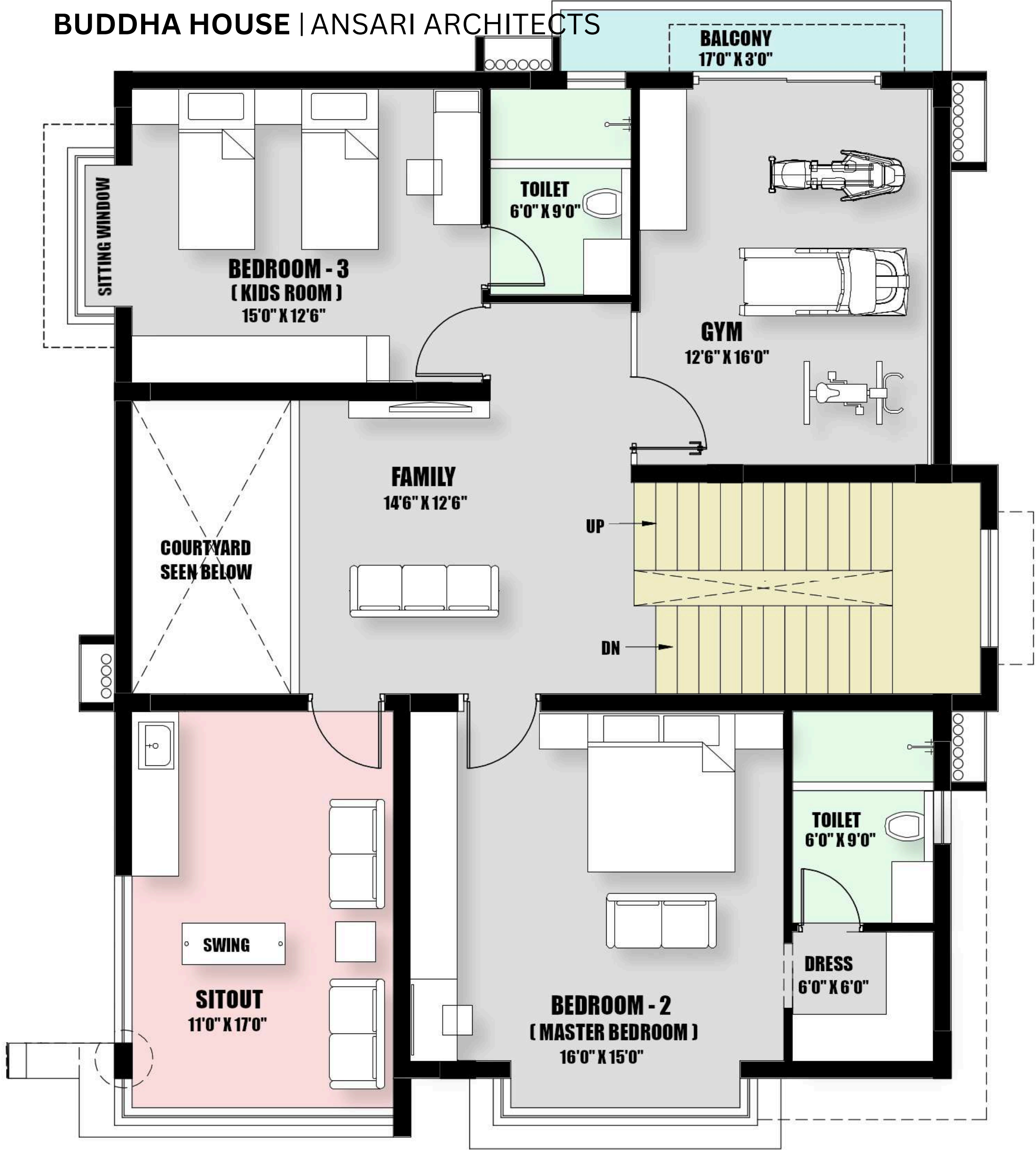
---

## Guest Bedroom

A modern guest room with a feature wall, high-gloss wardrobe, grey vitrified flooring, and pastel-accented bedding. The window allows natural light, while the doorway and corridor lead to the attached bathroom, maintaining privacy and smooth circulation.



BUDDHA HOUSE | ANSARI ARCHITECTS



FIRST FLOOR PLAN



First Floor

LEGEND

- FAMILY AREA
- BEDROOM - 2
- DRESSING ROOM
- TOILET
- BEDROOM - 3
- TOILET
- GYM
- BALCONY
- SITOUT AREA





## BedRoom - 2

The first-floor master bedroom combines marble flooring, a grey upholstered bed, and glossy wall panels with large sliding windows. Recessed lighting and natural light create a stylish, bright, and functional retreat.







## BedRoom - 2

The children's bedroom features two single beds, a playful window seating nook, and a study corner. Soft pastel tones, padded headboards, built-in storage, and glossy flooring create a bright, functional, and child-friendly space.







## GYM AREA

The gym offers a compact yet functional fitness space with essential equipment, a mirror panel, and concealed storage. Large windows and a glass door bring in natural light, while linear LED lighting ensures a bright, safe, and comfortable workout environment.



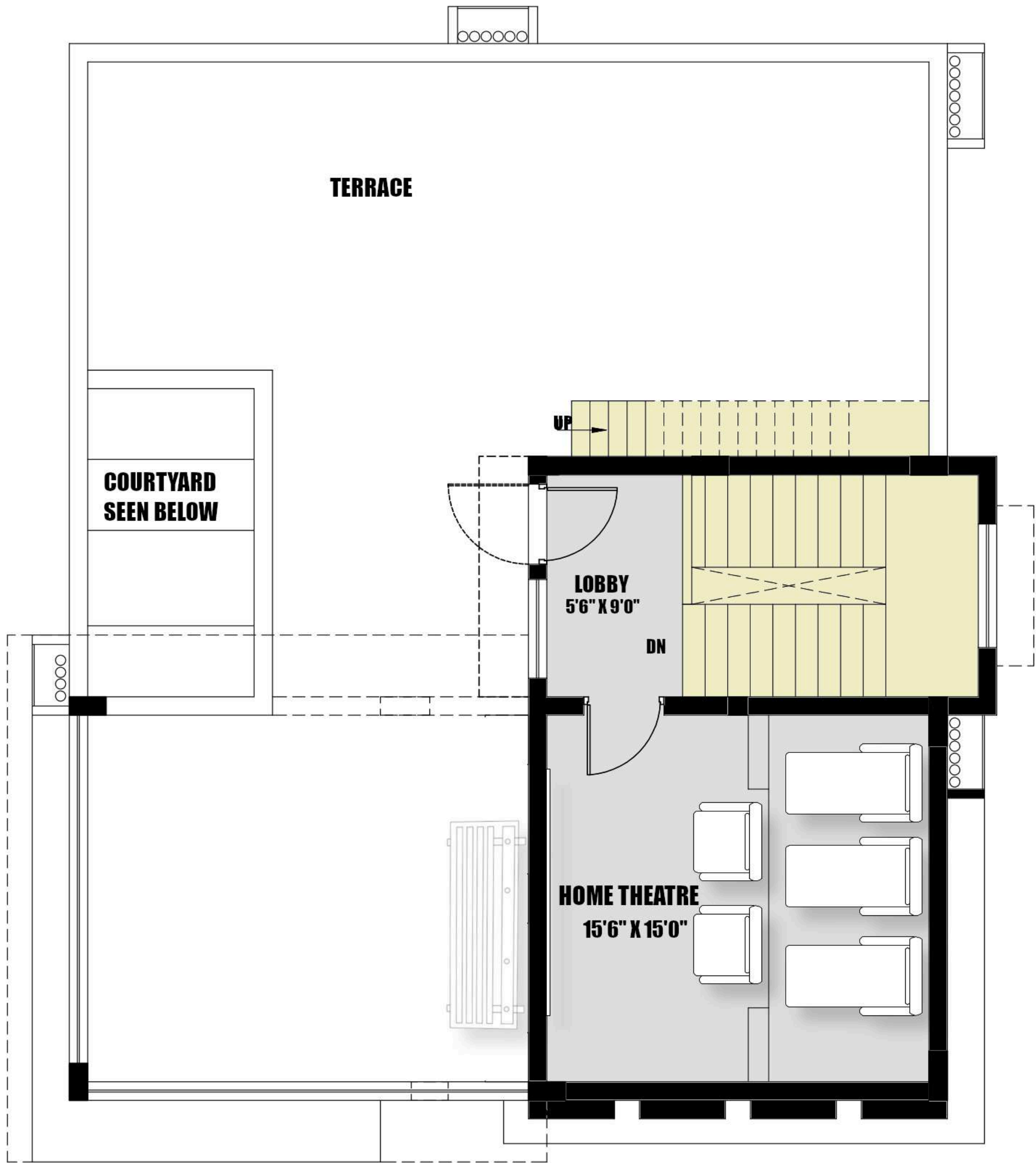


---

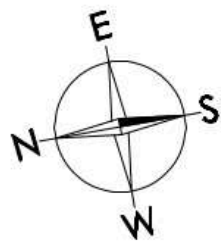
## Kitchen

The sit-out area features a suspended swing, vertical garden, and built-in counter, blending comfort and functionality. Wooden slats, light wood flooring, and plush maroon upholstery create a cozy, modern, and inviting outdoor retreat.





TERRACE FLOOR PLAN



Terrace Floor

LEGEND

- LOBBY
- HOME THEATRE
- TERRACE





## Home Theatre

A luxurious home theater with plush red recliners, acoustic walls, and star-lit black ceilings, offering a dramatic, immersive, and comfortable cinematic experience.





---

## Open Terrace

A semi-open terrace designed for relaxation and gatherings, featuring light vitrified flooring, decorative wooden ceiling panels, glass railing, and integrated seating for a modern, airy, and inviting outdoor space.



