

ANSARITM
ARCHITECTS

BIO HOUSE

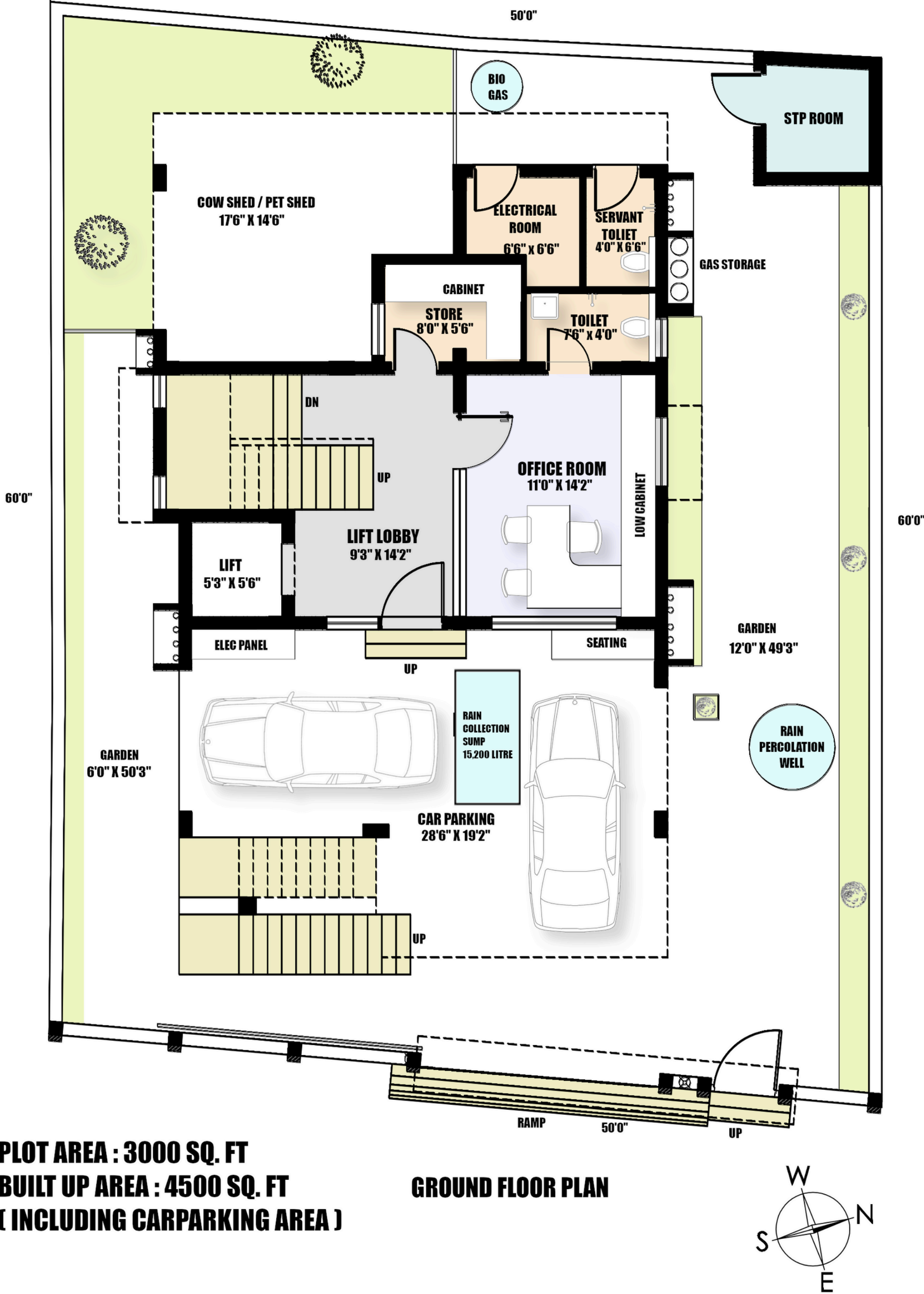




A linear verandah connects indoors and outdoors, featuring polished grey flooring, beige walls, a wooden lattice railing, wood-framed frosted glass doors, and greenery for a calm, elegant feel.

Project Location : Kottivakkam
Architectural Firm : Ansari Architects
Principal Architect : Dameem Ansari,
Jaffer Arshad Ansari

Plot Area : 3,000 Sq. Ft
No. Of Car Park : 1
No. Of Rooms : 4
Facing : North
Built - up Area : 4,500 Sq. Ft



Ground Floor

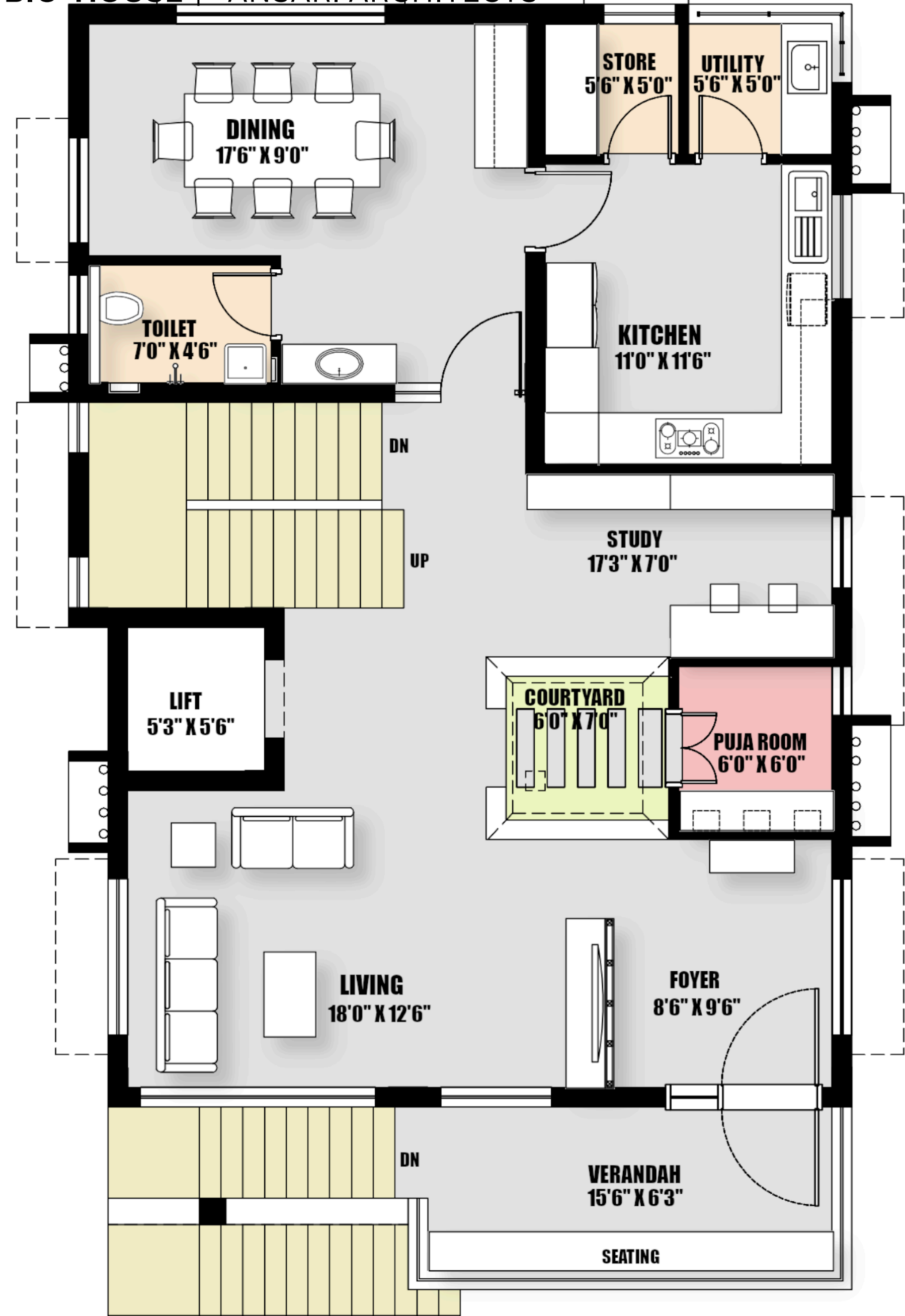
LEGEND

- CAR PARKING
- GARDEN
- LIFT LOBBY
- OFFICE ROOM
- TOILET
- STP ROOM
- SERVANT TOILET
- ELECTRICAL ROOM
- LIFT
- COW SHED / PET SHED
- STORE

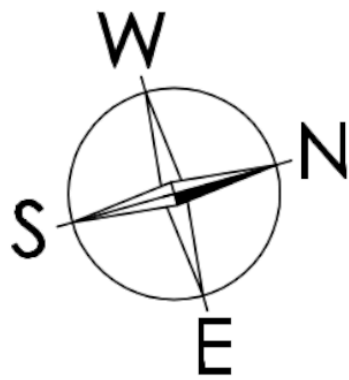


Office Room

The office is a compact, efficient workspace with a linear layout that maximizes storage and ensures ergonomic comfort.



FIRST FLOOR PLAN



First Floor

LEGEND

- VERANDAH
- FOYER
- LIVING
- COURTYARD
- PUJA ROOM
- UTILITY
- LIFT
- STUDY ROOM
- KITCHEN
- DINING
- TOILET
- STORE



Living Area

The living room is an open, central space with a sofa facing a wood-paneled TV wall, cream marble floors, and beige walls, blending modern comfort with warm accents.



Dining Area

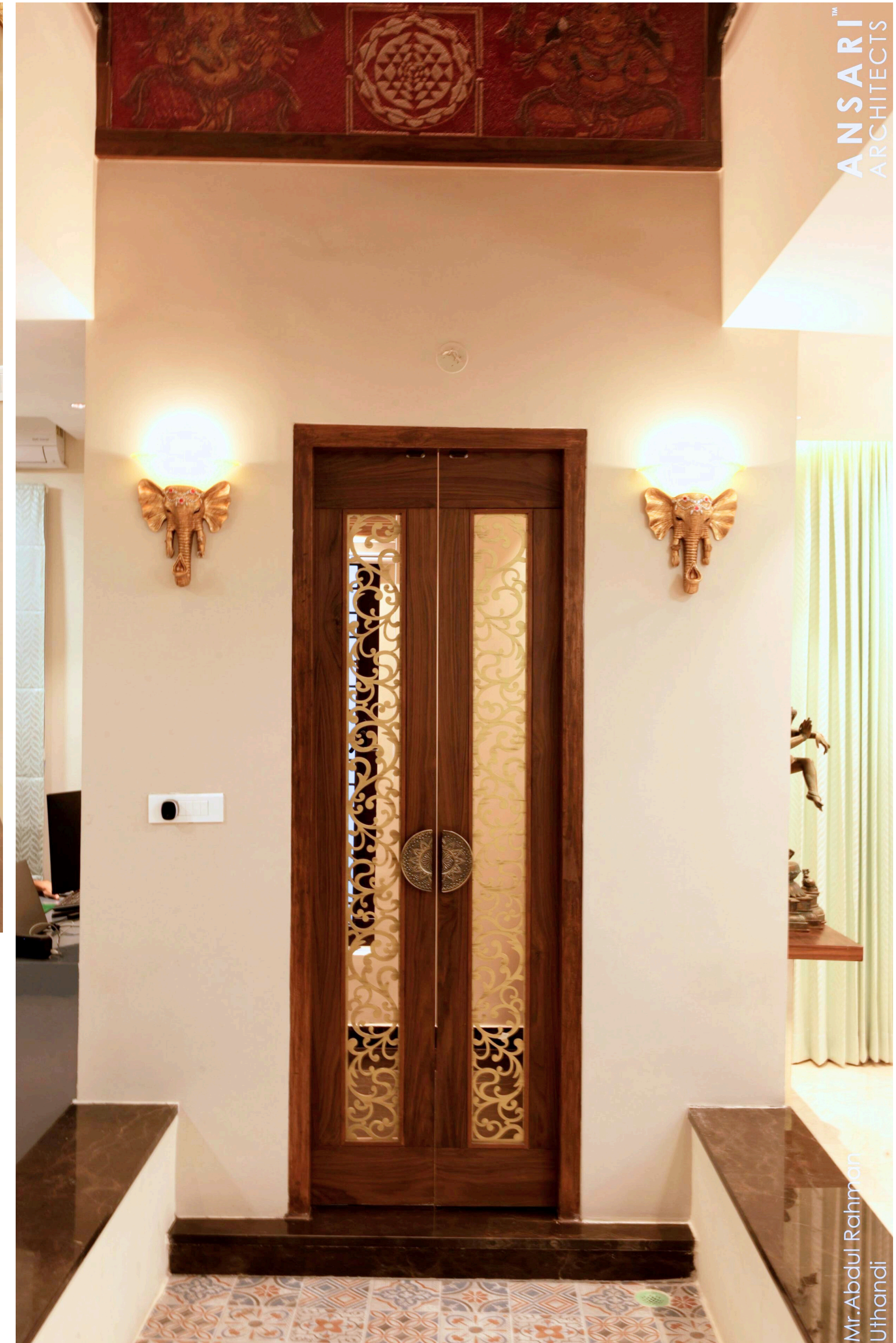
The dining area is a compact, intimate space with a rectangular table for eight. Large windows provide natural light, while a white marble table contrasts with dark flooring. Beige walls, pastel drapery, and wooden trims create a calm, warm, and airy atmosphere.

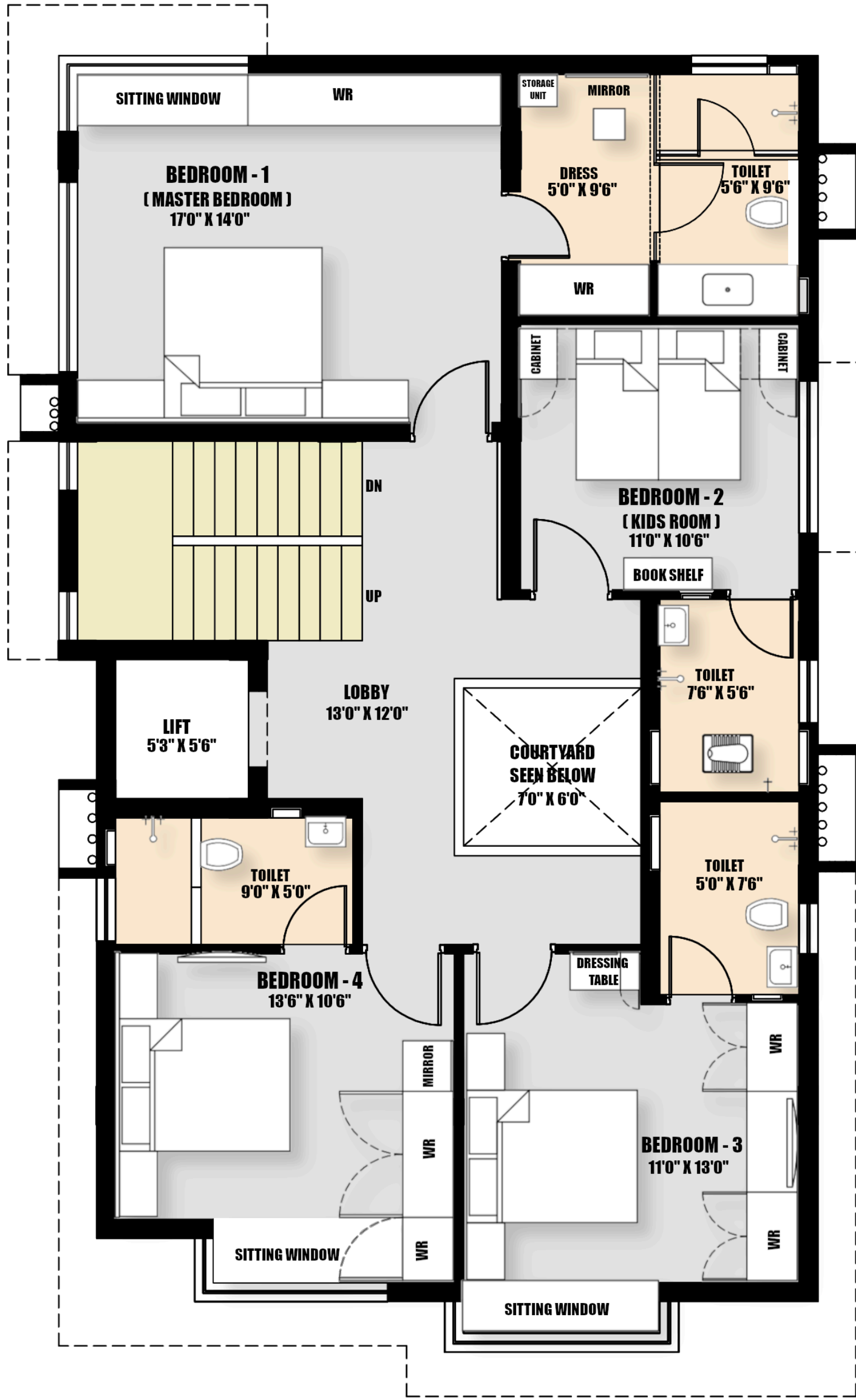


Study / Puja

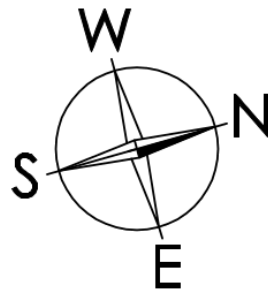
The puja room, centrally located and connected to the courtyard, features a symmetrical layout with natural light for a serene, spiritual atmosphere.

The study offers a linear, organized workspace with a window-side desk, grey cabinets, marble floors, and neutral walls.





SECOND FLOOR PLAN



Second Floor

LEGEND

- LOBBY
- LIFT
- BEDROOM - 1
- DRESS ROOM
- TOILET
- BEDROOM - 2
- TOILET
- BEDROOM - 3
- TOILET
- BEDROOM - 4
- TOILET



MASTER BEDROOM - 1

The master bedroom features a clean, symmetrical layout with a central bed, built-in wardrobe, and window seating nook, combining openness, natural light, and functional elegance.



Kids Bedroom - 2

The child's bedroom is compact and smartly planned, with a storage bed and built-in cabinetry to save space. Pastel green, beige, and cream tones with a mustard headboard create a calm, playful mood, while natural light and soft curtains keep the room bright and comfortable.





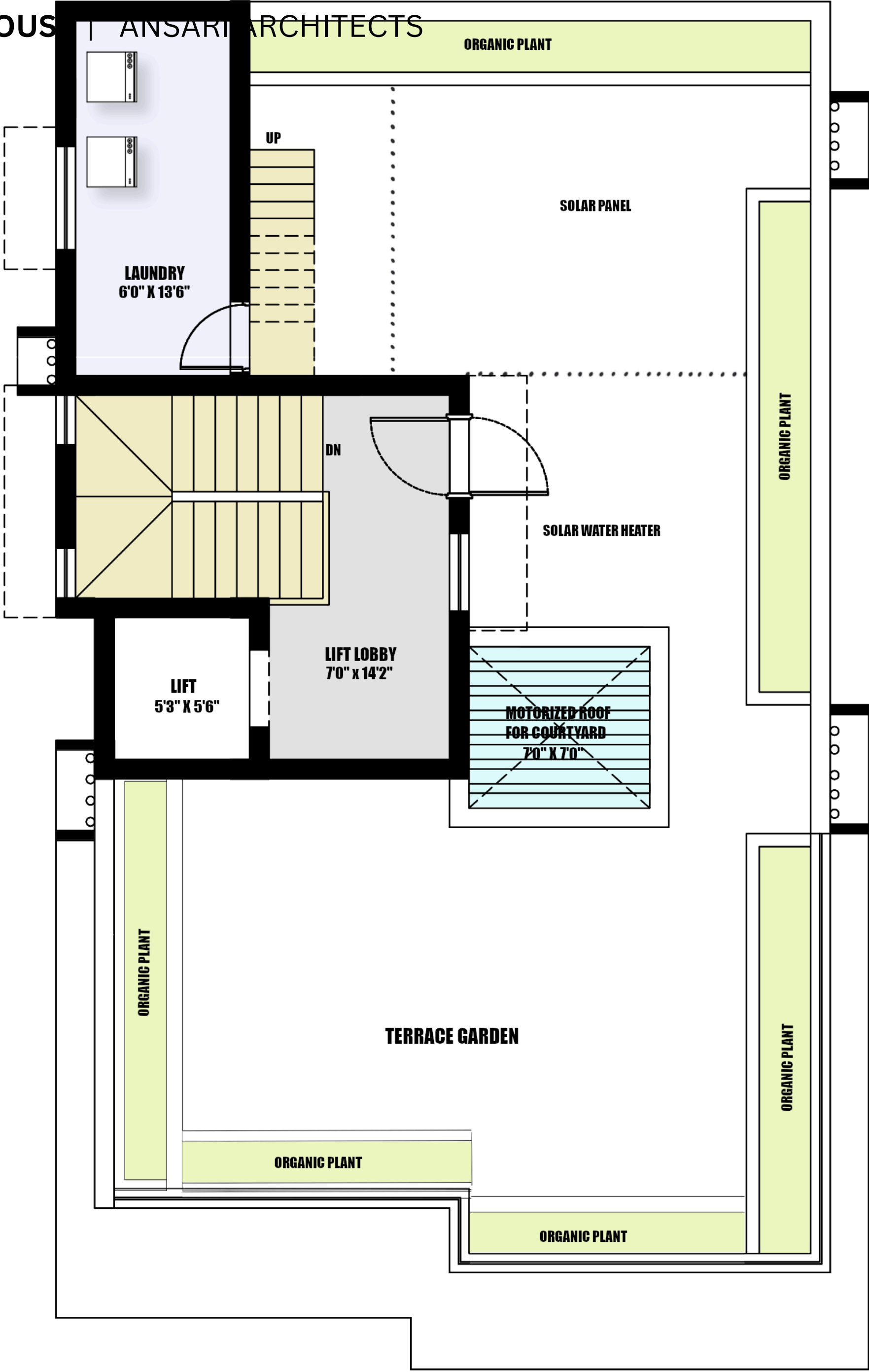
Bedroom - 3

The room features a clean linear layout with a central bed facing a bold wardrobe wall that integrates storage and display. Navy blue and white wardrobes, beige flooring, soft grey walls, and a teal headboard create a bright, youthful, and balanced interior.

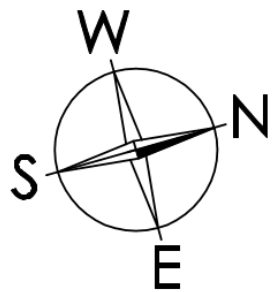


Bedroom - 4

The bedroom features a compact, balanced layout with a central bed, integrated storage, and a window seat. Warm beige tones, wooden finishes, and minimal decor create a calm, bright, and inviting space.



THIRD FLOOR PLAN



Third Floor

LEGEND

- LIFT
- LIFT LOBBY
- LAUNDRY
- ORGANIC PLANT
- MOTORIZED ROOF FOR COURTYARD
- SOLAR WATER HEATER
- SOLAR PANEL

